



FALL-WINTER 2021 COLLECTION

ASOLO IS A FAMILY COMPANY WHICH HAS GAINED AN IMPORTANT
WORLDWIDE POSITION DURING THE YEARS THANKS TO HIS VALUES. OUR
COMMITMENT IS TO FIND THE PERFECT TUNING BETWEEN TRADITION AND
INNOVATION.

THE TRADITION AS SHOE MAKERS IS OUR START, OUR ROOTS, OUR ORIGIN;
THE TRADITION IS WHAT IDENTIFY US AND TELL THE WORLD WHERE WE
COME FROM. THE INNOVATION IS WHAT MAKES US NEVER STOP OUR
RESEARCH, OUR STUDIES, OUR CHALLENGES FOR IMPROVING YOUR
EMOTIONS DURING OUTDOOR ACTIVITIES. THESE TWO KEYWORDS ARE THE
REASON OF OUR JOURNEY INTO THE OUTDOOT WORLD, A JOURNEY FILLED
OF PASSION WHICH WILL NEVER END.

INDEX

SNOWSHOEING BOOTS

WINTER HIKING

URBAN OUTDOOR

PERFORMANCE SNOWSHOEING



PERFORMANCE SNOWSHOEING



ASOLO RECREATIONAL SNOWSHOES AND WINTER TREKKING:

While snowshoeing began thousands of years ago as a means of travel and a way to hunt, in recent years, it has become a popular winter pastime for fitness and recreation.

Every winter more and more summer walkers are turning to snowshoeing as their winter activity. Today, snowshoes are lighter weight and engineered with modern materials like nylon, polyethylene and other specialized materials which provide a higher level of performance.

This category appeals to the widest range of users and they are designed for varied terrain. These snowshoes are perfect for beginners, as well as walkers and hikers spending most of their time on trails, parks and golf courses.

THE BENEFITS OF SNOWSHOEING:

Snowshoeing is one of the fastest growing winter sports and it attracts a wide range of consumers who are looking for an inexpensive way to embrace winter and stay active outside.

It is safe, simple and easy to learn. Snowshoeing is a fun winter activity that can be enjoyed by the entire family from kids to grandparents. Snowshoes are versatile: they can be used for backyard excursions, a walk in the park or hiking in the back - country.

Snowshoeing is a low impact workout and a highly effective way to burn calories and stay active all winter. Walking with snowshoes means that you can venture into nature often where skiers and climbers can't reach. Exploring valleys & forests covered in a blanket of snow, reaching peaks or mountain villages 'shut off' by winter.

CUSTOMER PROFILE



BEST USE: SNOWSHOEING, FOR WINTER AND HARSH WEATHER HIKES.

CUSTOMER PROFILE

Gender:	Women & Man
Age:	All ages
Occupation:	Student, young professional, middle management
Social level:	Medium high
Hobbies & Leisure:	Snowshoeing, Skiing, Outdoor, Hiking & Camping

CUSTOMER PROFILE EXPECTATIONS:

1. Lightness
 2. Warmth & Waterproofness
 3. Traction & Stability
 4. Fit & Comfort
 5. Security
 6. Durability
 7. Style
 8. Made in
-

TECHNOLOGIES



WARMTH & WATERPROOFING

Gore-Tex Insulated Comfort Footwear – is made to keep you warm, dry and protected, even when you're out in demanding winter conditions. A specially-constructed layer of breathable insulation adds comfort where and when you need it. So even if the temperature drops, you stay comfortable and protected.



TRACTION:

Vibram Arctic Grip is a state-of-the-art technology representing the most advanced cold-weather gripping system Vibram has ever created. The Arctic Grip technology is entirely rubber material without addition of metal components or inserts. It provides the best performance possible when the design of the sole features wide contact areas with the ground and rubber lugs with wider support surfaces. Unparalleled technology on slippery, wet ice surfaces, the outstanding durability represent the three main benefits of the Arctic Grip Compound. This product will not prevent slipping on cold, slick, wet, icy, or snowy surfaces and does not replace use of crampons or spikes. This product is not intended for use on, and may harm, indoor surfaces.



SECURITY:

The RECCO® Rescue System is two-part technology; ski resorts and mountain rescue teams carry RECCO® detectors, which send out a search signal. RECCO® reflectors worn by outdoors people, bounce back a directional signal that directs the rescuer straight to the reflector. Unlike other technologies, multiple RECCO® reflectors on a person can improve detection. The reflector is permanently attached and requires no training or batteries to function. It is always "on" and ready. (We added this technology inside the tongue of the boot).



FIT & COMFORT:

Asolo pays particular attention to the natural flex of the foot while also making sure that performance and comfort of its footwear is maximized. The new last has specific anatomical features sculpted to match defined and user criteria and fit characteristics. The last are broadly defined by men's and women's.



MADE IN EUROPE:

Asolo is committed to using resources efficiently, keeping transport to a minimum and working with materials that are as eco-friendly as possible. Waste is minimized and items recycled whenever this is practicable. Effective controls of waste in respect of ground, air and water pollution are adopted. In the case of hazardous materials, emergency response plans are in place.

From the beginning Asolo's philosophy has been to develop innovative and technologically advanced footwear with great looks. Asolo pays particular attention to the natural flex of the foot while also making sure that performance and comfort of its footwear is maximized.

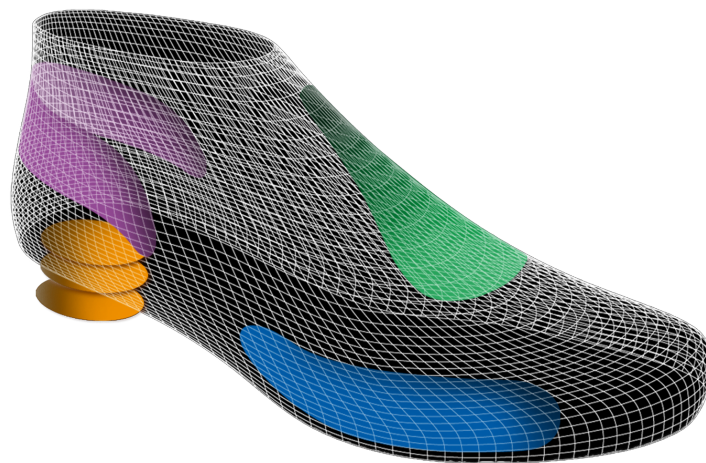
For this reason, the Asolo collection has been developed using 16 different lasts, each one with specific anatomical features sculpted to match defined and user criteria and fit characteristics. The last are broadly defined by men's, women's and child's fit, but also include narrow, normal and wide fit option in key styles.

The women's last is specifically designed to accommodate the unique anatomical shape of a women foot paying attention to four specific areas:

- 01 forefoot fit
- 02 instep (arch)
- 03 heel shape
- 04 heel height

Every part is perfectly sculpted to best match the female foot anatomy.

The result is a range of footwear that fits naturally to the foot, with great performance and comfort.

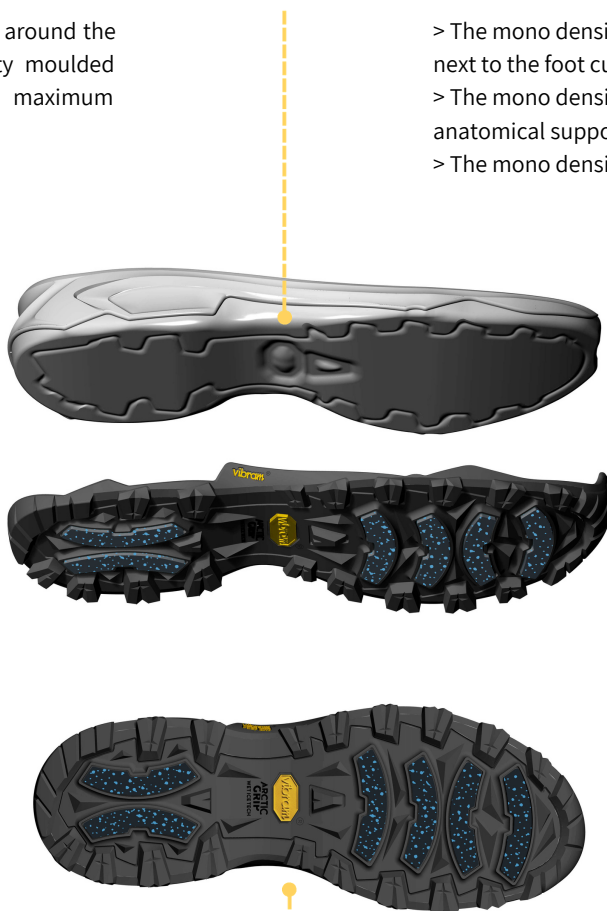


EVA MIDSOLE:

The midsole package is designed around the last and made by: mono density moulded EVA. which guarantees the maximum comfort, stability and flexibility.

BENEFITS OF THE EVA MIDSOLE

- > The mono density midsole provides an excellent next to the foot cushioning and stability.
- > The mono density midsole provides a great anatomical support.
- > The mono density midsole is extremely light.

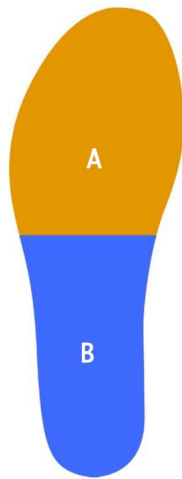


THE GHIACCIO OUTSOLE:

The outsole package is designed around the last and made by Vibram rubber sole with the Arctic Grip compound: the new high performance rubber compound featuring unparalleled grip on cold, icy, wet and snowy terrains, rugged longevity and optimal ground adaptability.

BENEFITS OF THE GHIACCIO OUTSOLE:

- > The rubber bottom has a large area of contact; self cleaning design.
- > The rubber bottom is designed to optimize the grip and durability for each surface or activity.
- > The heel is well sculpted to prevent problems during descent.
- > The rubber bottom compound is Vibram Arctic Grip.



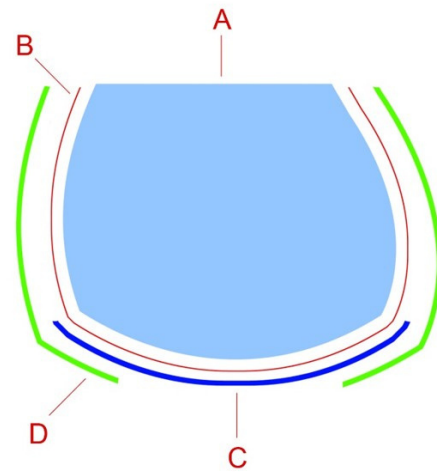
ARCTIC GV LASTING BOARD:

Engineered following exactly the last shape. It is made by polypropylene material and with different thickness from rear to the front area. The rear part is reinforced with a non woven textile.

A : Polypropylene
B : Non-woven textile

BENEFITS:

- > Lightness
- > Controlled flexibility
- > Foot protection



LASTED CONSTRUCTION:

This sophisticated and time-consuming technique involves the shoemaker pulling the upper over the last and downwards over the insole and affixing this to create a unit. The midsole and outsole are then applied.

BENEFITS:

- > The key advantages of cementing shoes are that they keep their shape and last a long time.
- > If the outsole is torn, the footwear can easily be resoled.

A : Last
B : Gore-Tex lining bootie
C : Lasting board Asoflex
D : Upper



ARCTIC GV ANATOMIC FOOTBED:

It follows the design of the last and the lasting board and it is made with 5 different materials (aluminium, velveteen, polyethylene, Non-woven textile, Eva); it has different thickness from rear to the front part.

- A : Thermo moulded PE heel support
- B : Non-woven textile

BENEFITS:

- > It provides cushioning and anatomically designed support.
- > The aluminum added keep the warmth.
- > Foam creates a cooler, drier, healthier, better cushioned environment under the foot.
- > It will not break down or loose effectiveness over time.
- > Eva heel cups allow for a better heel support and add cushioning.



ARCTIC GV TEMPERATURE:

With all the characteristics described, the comfort rating temperature of the model Arctic GV we developed is -15°C.

NOTE:

Temperature ratings are approximate based on high activity levels and can be affected by many conditions, including weather, wearer's activity level, fitness, metabolism, perspiration, circulation, exposure time, clothing and cold sensitivity.



RECCO RESCUE SYSTEM:

It makes you searchable to professional rescuers in the event of an avalanche accident or when lost in the outdoors. Wearing gear equipped with RECCO reflectors enables professional rescuers to locate you with RECCO detectors. The technology is a two-part system, the detector sends out a directional radar signal like the beam of a flash light. Once the radar beam hits the RECCO reflector the signal is echoed back and directs the rescuer to your location.

RECCO handheld detectors, first introduced in 1983, are utilized today as a standard tool for avalanche rescue by mountain rescuers worldwide.

For the user the RECCO reflector offers a simple solution to always be searchable. The reflector is a small band aid sized, passive electronic transponder that weights less than four grams. Its factory mounted permanently to clothing and gear that in unlikely to be torn off in the event of an avalanche or other accident. It is a non-powered device meaning that it never needs to be switched on, will never loose signal strength and needs no batteries to function. It is maintenance free and has a virtually unlimited lifespan.



ARCTIC GV

Best use: Snowshoeing, for winter and harsh weather hikes.



Lining: Gore-Tex®
Insulated Comfort
Footwear = Insulation,
waterproofness and
breathability

PU Rubber rand:
Maximum protection all
around



Recco Rescue System: Safety
improvement, be searchable

Upper: Water-resistant
suede mm 1,6-1,8 + high
tenacity nylon = Support,
comfort and protection

Closure System: Webbing
lacing system = Fast and
precise lace up

Midsole: Mono density eva = Stability,
cushioning and great anatomical
support

Outsole: Vibram Ghiaccio rubber
outsole with ArcticGrip compound =
Excellent grip on wet, icy and snowy
terrains



570
1/2 PAIR
8 UK



FIT
MM-ML



SIZE
MAN
7,5-12 UK

SIZE
WOMAN
4,5-7,5 UK

ARCTIC GV



MAN A12536 00 A176
grey-gunmetal-grey



WOMAN A12537 00 A884
grey-gunmetal-blue peacock

WINTER HIKING



CUSTOMER PROFILE



BEST USE: IDEAL LIGHTWEIGHT SHOE FOR HIKING AND URBAN WALKS
IN SNOWY AND ICY CONDITIONS.

CUSTOMER PROFILE:

Gender:	Women & Men
Age:	All ages
Occupation:	Students, young professional, middle management
Social level:	Medium high
Hobbies & Leisure:	Travels, hiking & camping

CUSTOMER EXPECTATIONS:

1. Lightness
 2. Insulation & Waterproofness
 3. Traction & Stability
 4. Fit & Comfort
 5. Style- Design
-

TECHNOLOGIES



WARMTH & WATERPROOFNESS:

Gore-Tex Insulated Comfort Footwear is made to keep you warm, dry and protected, even when you're out in demanding winter conditions. A specially-constructed layer of breathable insulation adds comfort where and when you need it. So even if the temperature drops, you stay comfortable and protected.



FIR & COMFORT:

Asolo pays particular attention to the natural flex of the foot while also making sure that performance and comfort of its footwear is maximized. The new last has specific anatomical features sculpted to match defined and user criteria and fit characteristics. The last are broadly defined by men's and women's.



TRACTION:

Vibram Arctic Grip is a state-of-the-art technology representing the most advanced cold-weather gripping system Vibram has ever created. The Arctic Grip technology is entirely rubber material without addition of metal components or inserts. It provides the best performance possible when the design of the sole features wide contact areas with the ground and rubber lugs with wider support surfaces. Unparalleled technology on slippery, wet ice surfaces, the outstanding durability represent the three main benefits of the Arctic Grip Compound. This product will not prevent slipping on cold, slick, wet, icy, or snowy surfaces and does not replace use of crampons or spikes. This product is not intended for use on, and may harm, indoor surfaces.

EVA MIDSOLE:

The midsole package is designed around the last and made by: mono density moulded EVA offering the greatest support, stability and comfort.

BENEFITS OF THE EVA MIDSOLE:

- > Excellent cushioning and stability
- > Perfect anatomic support
- > Lightness

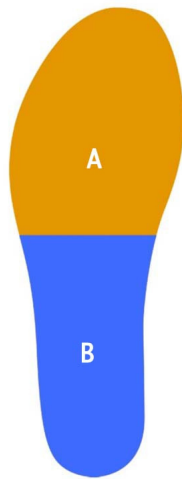


CRYSTAL AG OUTSOLE:

The outsole package is born from the collaboration between Asolo and Vibram and designed around the last and made by Vibram rubber sole with Arctic Grip compound: the new high performance rubber compound featuring unparalleled grip on cold, icy, wet and snowy, rugged longevity and optimal ground adaptability.

BENEFITS OF THE CRYSTAL AG OUTSOLE:

- > It provides cushioning and anatomically designed support.
- > The aluminum added keep the warmth.
- > Foam creates a cooler, drier, healthier, better cushioned environment under the foot.
- > It will not break down or loose effectiveness over time.



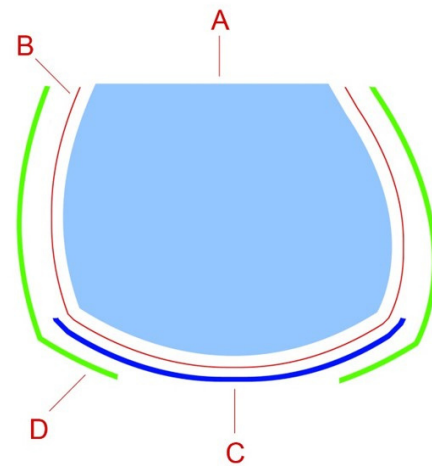
LASTING BOARD:

Engineered following exactly the last shape. It is made by polypropylene material and with different thickness from rear to the front area. The rear part is reinforced with a non woven textile.

A : Polypropylene
B : Non-woven textile

BENEFITS:

- > Lightness
- > Controlled flexibility
- > Foot protection



LASTED CONSTRUCTION:

This sophisticated and time-consuming technique involves the shoemaker pulling the upper over the last and downwards over the insole and affixing this to create a unit. The midsole and outsole are then applied.

BENEFITS:

- > The key advantages of cementing shoes are that they keep their shape and last a long time.
- > If the outsole is torn, the footwear can easily be resoled.

A : Last
B : Gore-Tex lining bootie
C : Lasting board Asoflex
D : Upper



ANATOMIC FOOTBED:

It follows the design of the last and the lasting board and it is made of velveteen for the top layer, PU, for the middle layer and aluminium film in the lower layer. It utilizes different thickness from rear to the front part.

: Velveteen

Middle layer: Pu

Lower layer: aluminum film

BENEFITS:

- > It provides cushioning and anatomically designed support.
- > The aluminum added keep the warmth.
- > Foam creates a cooler, drier, healthier, better cushioned environment under the foot.
- > It will not break down or loose effectiveness over time.



TEMPERATURE:

With all the characteristics described, the comfort rating temperature of the models for winter hiking we developed is -10°C.

NOTE:

Temperature ratings are approximate based on high activity levels and can be affected by many conditions, including weather, wearer's activity level, fitness, metabolism, perspiration, circulation, exposure time, clothing and cold sensitivity.

NUUK GV

Best use: Ideal lightweight shoe for hiking and urban walks in snowy and icy conditions.



Lining: Gore-Tex®
Insulated Comfort
Footwear = Insulation,
waterproofness and
breathability



Heel Locking: Provides a
more stable and secure fit

Upper: Water-resistant
suede mm 1,6-1,8 and
polyester = Support, comfort
and protection

Closure System: Webbing
lacing system = Fast and
precise lace up

Rubber toe cap: Additional
front protection

Midsole: Mono density eva = Stability,
cushioning and great anatomical
support

Outsole: Asolo/Vibram Crystal AG
rubber outsole with ArcticGrip
compound = Excellent grip on wet, icy
and snowy terrains



470
1/2 PAIR
8 UK



FIT
MM-ML



SIZE
MAN
7-12,5 UK

SIZE
WOMAN
4-8 UK



MAN A26036 00 A778
black-black



WOMAN A26037 00 A933
black-blue moon

NARVIK GV

Best use: Ideal lightweight shoe for hiking and urban walks in snowy and icy conditions.



Lining: Gore-Tex®
Insulated Comfort
Footwear = Insulation,
waterproofness and
breathability



Upper: Water-resistant
suede mm 1,6-1,8 + high
tenacity nylon = Support,
comfort and protection

Closure System: Hardware
lacing system = fast and
precise lace up

Heel Locking: Provides a
more stable and secure fit

Rubber toe cap: Additional
front protection

Midsole: Mono density eva = Stability,
cushioning and great anatomical
support

Outsole: Asolo/Vibram Crystal AG
rubber outsole with ArcticGrip
compound = Excellent grip on wet, icy
and snowy terrains



490
1/2 PAIR
8 UK



FIT
MM-ML



SIZE
MAN
7-12,5 UK

SIZE
WOMAN
4-8 UK

NARVIK GV



MAN A26038 00 A937
graphite-smoky grey



WOMAN A26039 00 A935
smoky grey-blue moon

OURBAN OUTDOOR



CUSTOMER PROFILE



BEST USE: EVERYDAY WALKING, TRAVEL, LIFESTYLE.

CUSTOMER PROFILE:

Gender:	Women & Men
Age:	All aged
Occupation:	Students, young professional, managers
Social level:	Medium high
Hobbies & Leisure:	Outdoor & travels

CUSTOMER EXPECTATIONS:

1. Style - design
 2. Lightness
 3. Optimum comfort
 4. Quality
 5. Made in
-

TECHNOLOGIES



COMFORT:

The upper is made in nubuck which is a top-grain cattle leather that has been sanded or buffed on the grain side, or outside, to give a slight nap of short protein fibers, producing a velvet-like surface. It is resistant to wear. Nubuck is similar to suede, but is created from the outer side of a hide, giving it more strength and thickness and a fine grain. Our supplier is Dani SpA. In 1950, Angelo Dani founded a small tannery for the production of leathers for industrial gloves and in the '70s the company was passed to the founder's six sons, authors of the company's dimensional and geographical growth. In 1997, Dani achieved its first goal by obtaining the first quality management system certificate, according to the norm ISO 9001. The company is located in Arzignano (Vicenza), which is the main tanning center in the world, and it produces, entirely in Italy, genuine leather for various sectors.



WATERPROOFNESS & BREATHABILITY:

Gore-Tex® new laminated is engineered with recycled material which assures waterproofness and breathability. Water stays on the outside while perspiration can easily escape from the inside.



FIT & COMFORT:

Asolo pays particular attention to the natural flex of the foot while also making sure that performance and comfort of its footwear is maximized. The new last has specific anatomical features sculpted to match defined and user criteria and fit characteristics. The last are broadly defined by men's and women's.



TRACTION:

Vibram Mega Grip is cutting-edge technology that represents the most advanced traction system for wet and dry surfaces that Vibram has ever created. Mega Grip technology is made entirely of rubber material without the addition of metal components or inserts. Unmatched technology on wet surfaces and exceptional durability are the main advantages of the compound.



MADE IN ITALY:

Made in Italy represents the excellence of creativity and craftsmanship.

The Italian excellences are famous all over the world, our artistic and craftsmanship, the genius and a lot of commitment have allowed us to create a completely new line of products with top-level characteristics. The high quality of the leathers and components, the perfection of the finishes and the refinement of the models make the result superior. We live, breathe, design and manufacture high quality, like no other in the world.

MICROPOROUS MIDSOLE:

The midsole package is designed around the last and made by: mono density microporous offering the greatest support, stability and comfort.

BENEFITS OF THE MICROPOROUS MIDSOLE:

- > Excellent cushioning and stability
- > Perfect anatomic support
- > Lightness

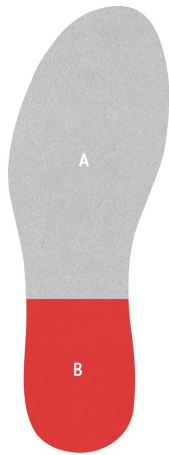


THE GROUND OUTSOLE:

The outsole package is born from the collaboration between Asolo and Vibram and designed around the last and made by Vibram rubber sole with Mega Grip compound: the high performance rubber compound featuring unparalleled grip on wet and dried terrains.

BENEFITS OF THE GROUND OUTSOLE:

- > The rubber bottom has a large area of contact and self cleaning design.
- > The rubber bottom is designed to optimize grip and durability for each surface or activity.
- > The rubber bottom compound is Vibram Mega Grip.
- > The new high performance rubber compound featuring unparalleled grip on wet and dry surfaces, rugged longevity and optimal ground adaptability.



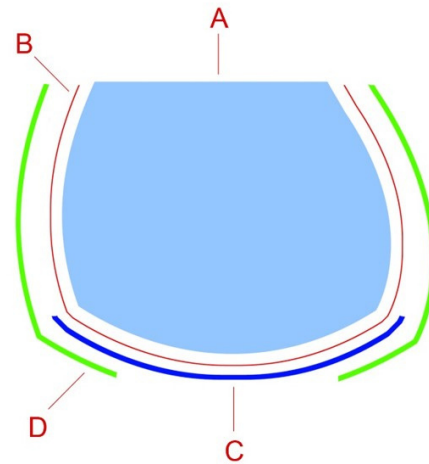
LASTING BOARD:

It's engineered following exactly the last shape and it's made by polypropylene material with different thickness from rear to the front area. More, the rear part is reinforced with a non woven textile.

A : Polypropylene & Non-woven textile
B : Polypropylene

BENEFITS:

- > Lightness
- > Controlled flexibility
- > Feet protection



LASTED CONSTRUCTION:

This sophisticated and time-consuming technique involves the shoemaker pulling the upper over the last and downwards over the insole and affixing this to create a unit. The midsole and outsole are then applied.

BENEFITS:

- > The key advantages of cementing shoes are that they keep their shape and last a long time.
- > If the outsole is torn, the footwear can easily be resoled.

A : Last
B : Gore-Tex lining bootie
C : Lasting board Asoflex
D : Upper



ANATOMIC FOOTBED:

It follows the design of the last and the lasting board and it is made of polyester, Eva and non-woven textile. It utilizes different thickness from rear to the front part.

A : Polyester

B: Eva

C : Non-woven textile

BENEFITS:

- > It provides cushioning and anatomically designed support.
- > It won't break down or lose effectiveness over time.



GORE-TEX LINING:

Gore-Tex Footwear Laminate engineered with new face fabric recycled material assures waterproofness and breathability. Water stays on the outside while perspiration can easily escape from the inside.

In 1959, Bill and Genevieve Gore launch W. L. Gore & Associates in the basement of their home in Newark, Delaware. Today is recognized as the finest waterproof and breathable material in the world. To ensure the highest quality and safety, Gore-Tex work with independent, credible third-party standards "bluesign®". Asolo's shoes are certified by Gore-Tex® and every pair made are 100% product tested.

ACTIVE GV

Best use: Lightweight shoe ideal for urban excursions and walks.



Lining: Gore-Tex® + leather collar = Waterproofness, breathability & comfort



Upper: Water-resistant Nubuck mm 1,3-1,5 = Support, protection and comfort

Closure System: Holes lacing system = Fast and precise lace up

Rubber toe cap: Additional front protection

Midsole: Mono-density microporous = Cushioning, stability and anatomical support

Outsole: Asolo/Vibram Ground with MegaGrip compound = Excellent grip on wet and dried terrains



400
1/2 PAIR
8 UK



FIT
MM-ML



SIZE
MAN
7-12,5 UK

SIZE
WOMAN
4-8 UK

ACTIVE GV



WOMAN A38027 00 A918
petroleum



WOMAN A38027 00 A362
grey



WOMAN A38027 00 A984
ocean



WOMAN A38027 00 A716
spice



WOMAN A38027 00 A039
tortora

ACTIVE GV



MAN A38026 00 A551
dark brown



MAN A38026 00 A362
grey



MAN A38026 00 A984
ocean



MAN A38026 00 A039
tortora

FIELD GV

Best use: Lightweight shoe ideal for urban excursions and walks.



Lining: Gore-Tex® + leather collar = Waterproofness, breathability & comfort



Upper: Water-resistant Nubuck mm 1,3-1,5 = Support, protection and comfort

Closure System: Holes lacing system = Fast and precise lace up

Rubber toe cap: Additional front protection

Midsole: Mono-density microporous = Cushioning, stability and anatomical support

Outsole: Asolo/Vibram Ground with MegaGrip compound = Excellent grip on wet and dried terrains



360
1/2 PAIR
8 UK



FIT
MM-ML



SIZE
UOMO
7-12,5 UK

SIZE
DONNA
4-8 UK

FIELD GV



WOMAN A38029 00 A918
petroleum



WOMAN A38029 00 A362
grey



WOMAN A38029 00 A984
ocean



WOMAN A38029 00 A716
spice



WOMAN A38029 00 A039
tortora

FIELD GV



MAN A38028 00 A551
dark brown



MAN A38028 00 A362
grey



MAN A38028 00 A984
ocean



MAN A38028 00 A039
tortora



CONTACTS



Address:

Asolo SrL
Via delle industrie n° 2,
Nervesa della Battaglia, Treviso (Italy)



Telephone number:

+39 0422 8866



Email:

asolo@asolo.com



Website:

www.asolo.com



Facebook:

asolo.official



Instagram:

asolo.official
