



SPRING SUMMER 2024 COLLECTION

SALES MANUAL

ASOLO IS A FAMILY COMPANY WHICH HAS GAINED AN IMPORTANT
WORLDWIDE POSITION DURING THE YEARS THANKS TO HIS VALUES. OUR
COMMITMENT IS TO FIND THE PERFECT TUNING BETWEEN TRADITION AND
INNOVATION.

THE TRADITION AS SHOE MAKERS IS OUR START, OUR ROOTS, OUR ORIGIN;
THE TRADITION IS WHAT IDENTIFY US AND TELL THE WORLD WHERE WE
COME FROM. THE INNOVATION IS WHAT MAKES US NEVER STOP OUR
RESEARCH, OUR STUDIES, OUR CHALLENGES FOR IMPROVING YOUR
EMOTIONS DURING OUTDOOR ACTIVITIES. THESE TWO KEYWORDS ARE THE
REASON OF OUR JOURNEY INTO THE OUTDOOT WORLD, A JOURNEY FILLED
OF PASSION WHICH WILL NEVER END.

ALPINE

EXPEDITION

MOUNTAINEERING

APPROACH

BACKPACKING

TRIPLE POWER STRUCTURE

MOUNTAIN TREKKING

HIKING

ENERGY

RADIANT

A-FAST

JUNIOR

URBAN OUTDOOR

URBAN OUTDOOR

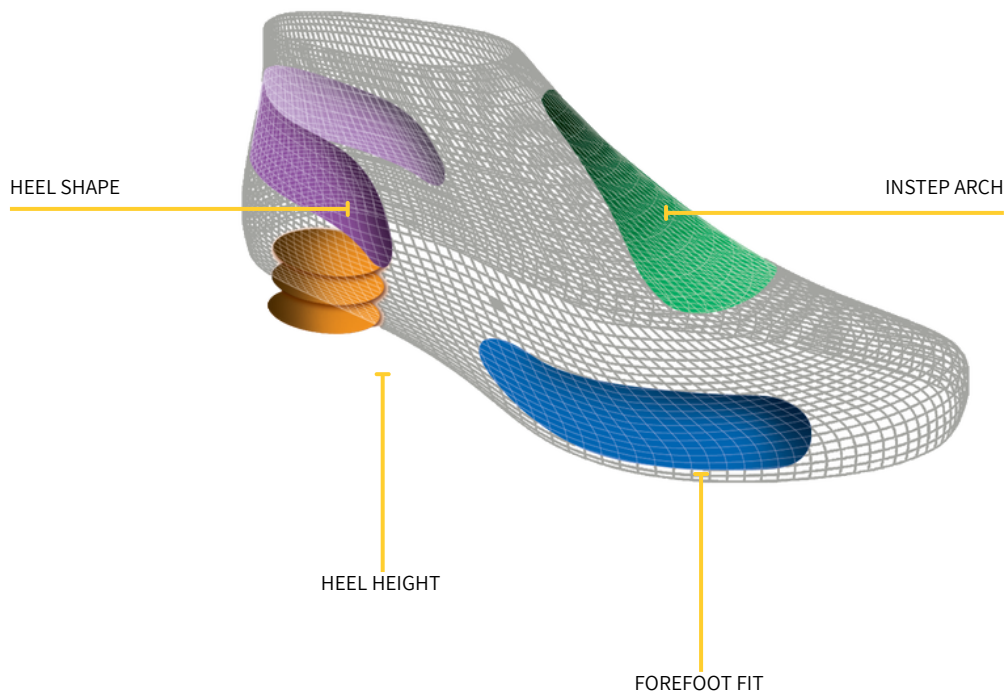
It is the very essence of the shoes, the primary thing that determines the fit.

From the beginning Asolo's philosophy has been to develop innovative and technologically advanced footwear with great looks. Asolo pays particular attention to the natural flex of the foot while also making sure that performance and comfort of its footwear is maximized.

For this reason, the Asolo collection has been developed using 16 different lasts, each one with specific anatomical features sculpted to match defined user criteria and fit characteristics. The last are broadly defined by men's, women's and child's fit, but also include regular, wide and bunion fit option in key styles.

A DEFINED FIT FOR WOMEN & MAN

The Woman's last is specifically designed to accommodate the unique anatomical shape of a woman foot paying attention to four specific areas:



WOMAN LAST:

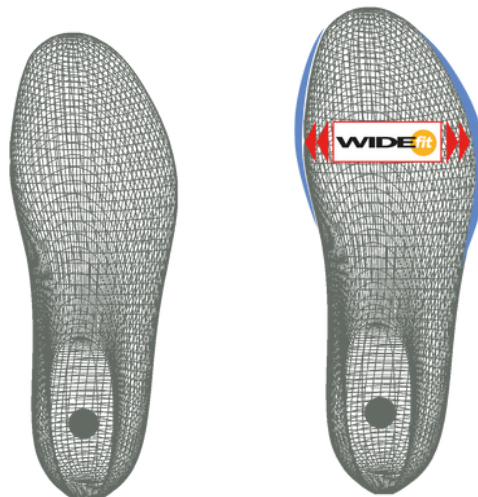
Following our fit philosophy, Asolo engineered and developed a completely dedicated woman last with a particular focus on allux valgus. The word bunion comes from the Latin "bunio," meaning enlargement, and the medical term for the condition is "hallux valgus." About 10-25% of people have bunions, which can make your feet so sore that you can barely walk.

Bunions can lead to difficulties finding properly fitting footwear and may force a person to buy a larger size shoe to accommodate the width of the bunion. If the bunion deformity becomes severe enough, the foot can hurt in different places even without the constriction of shoes. It is then considered as being a mechanical function problem of the forefoot.



MAN LAST:

We have a range of wide fit walking boots which offer more space at the front of the foot whilst keeping a firm grip on the heel. With extra space at the front of the boots, your toes will no longer be squashed but will actually benefit from some much needed wriggle room.





ALPINE

EXPEDITION

MANASLU 8000 GV
MONT BLANC GV
EIGER XT EVO GV
COMP XT EVO
AFS 8000

MOUNTAINEERING

ALTA VIA GV
6B+ GV
FRENEY EVO LTH GV
FRENEY EVO GV
FRENEY EVO MID LTH GV
FRENEY EVO MID GV

APPROACH

ELDO MID LTH GV
ELDO MID GV
ELDO LTH GV
ELDO LTH
ELDO GV
ELDO

EXPEDITION

It's made of three boots in one: the outer gaiter, the main shell and the inner boot.

It's been developed using two different lasts: one for the main shell and one for the inner boot.

It's been developed with two different constructions: lasted (main shell) and slip lasted (inner boot).



The outer gaiter:

The outer gaiter is made of a sandwich construction made of four material: PU foam, stretch Cordura, neoprene and the Gore-Tex Extended Comfort Footwear.

The four materials combined together guarantee lightness and resistance to abrasion.

The Gore-Tex Extended Comfort lining guarantees waterproofness and breathability.

The YKK Zip closure system is fast, waterproof and has a precise lace up.

The PU rand all around gives additional protection.

The shell: it is made with a lasted construction on a carbon fiber board.

The upper is made by a sandwich of 5 different materials which are: Cordura, aluminum film, polyethylene + Eva (3 mm), aluminum film and polyester. This material combination guarantees lightness, resistance to abrasion and support.



The carbon fiber lasting board:

The carbon fiber lasting board is perfect for the anti-torsional action and for giving great support and stability.

The carbon fiber are positioned at 45° in order to reduce the torsion.

The carbon fiber are positioned in the order of length in order to improve the stiffness.

There are 6 different layers of carbon fiber.

EXPEDITION

The shell closure system:

The closure system is made by the Dial Lacing System Technology which is a fast and precise closure technology, for a perfect closure on the instep and collar area (it's easy to use when the athlete wears the gloves).

The first Dial locks the ankle and the top part of the shell.

The second Dial locks the instep and the front part.



The Step-In Technology:

It allows the easy and fast step in of the inner boot into the shell.

The Step-In Technology is made of three steps which are:

1. Insert the inner boot into the shell
2. Lock the rear flap and the front double dial system
3. Ready to climb

The inner boot technology:

Collar: made of Schoeller Soft Shell which guarantees the best lightness & comfort.

Upper: made of Cordura laminated with aluminum film + polyethylene 3 mm foam, it assures lightness, resistance and protection.



The inner boot technology:

Inner Boot lining: Primaloft 400 grms which ensures the maximum warmth.

Closure System: with the Fast Lock Lacing System which is a fast and precise closure technology; easy to use when the athlete wears gloves.

Anatomic Footbed: Manaslu Primaloft and no woven textile which assure the anti-torsional and support.

Recco Rescue System: additional security technology, integrated in the right foot.

EXPEDITION

**Carbon Asoflex:**

The carbon fiber lasting board is perfect for the anti-torsional action, for giving great support and stability. The carbon fiber are positioned at 45° in order to reduce the torsion. The carbon fiber are positioned in the order of length in order to improve the stiffness. There are 6 different layers of carbon fiber.



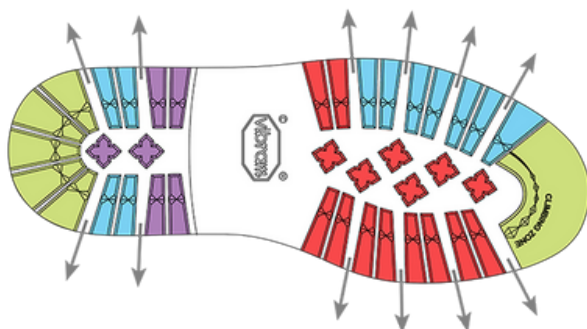
Lasting Board: Six layers of carbon fiber = Support & stability plus an anti-torsional action and the greatest rigidity.

**TPU insert:** adaptability for automatic crampon

Mono density microporous midsole: stability, support, cushioning and comfort

**TPU insert:** adaptability for automatic crampon

Outsole: Vibram Betulla expanded rubber outsole and Vibram Mont Compound in the front climbing zone = Lightness, grip and precision



- Grip
- Breaking
- Traction
- Stability
- ↗

 Self-cleaning

MANASLU 8000 GV

Best use: Technical and high altitude mountaineering and extreme use in cold environments.

MAN A01046 00 A392
black-red



1.246
1/2 PAIR
8 UK



FIT
MM



SIZE
MAN
7-12 UK

OUTER GAITER: High tenacity stretch Cordura + neoprene + Schoeller Soft Shell + Pu rand

GAITER LINING: Gore-Tex Extended Comfort Footwear

SHELL: Cordura laminated with aluminium film + polyethylene 3 mm

SHELL LINING: Polyethylene and polyester

INNER BOOT: Cordura laminated with aluminium film + polyethylene 3mm

INNER BOOT LINING: Primaloft 400 grms

LASTING BOARD: Carbon fiber

ANATOMIC FOOTBED: Manslu Primaloft and no woven textile

OUTSOLE: Vibram Betulla + toe reinforcement in full Vibram rubber; microporous midsole + Tpu crampon attachments

MADE: in Europe

RESOLING: The model can get resoled

EXPEDITION



The outer gaiter: the stretch nylon outer gaiter combined with the neoprene lining, the waterproof YKK zip and heat-sealed seams plus the PU lateral rand guarantee together the best protection, support and performances.



The inner boot: the nylon and Cordura inner boot which gives protection, support and lightness, is laced up with the webbing lacing system. The Schoeller Soft Shell used in the collar, the lateral flex points and the gusset improve the movement and comfort during activities. The Gore-Tex Insulated Comfort Footwear lining guarantees the insulation, waterproofness and breathability. The Gore-Tex Zamba which is more stretchable is used as a lining in the gusset lower part.



TPU insert: adaptability for automatic crampon

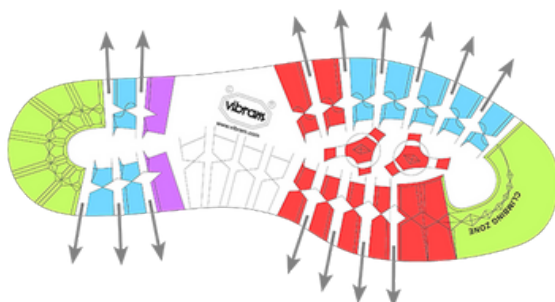
PU Heel: shock absorption

High density microporous midsole: stability and support

Low density microporous midsole: cushioning & comfort

TPU insert: adaptability for automatic crampon

Outsole: Vibram 1229 Mulaz = grip and precision + adaptability to automatic crampons



-  Grip
-  Breaking
-  Traction
-  Stability
-  Self-cleaning

MONT BLANC GV

Best use: Technical and high altitude mountaineering and extreme use in cold environments.

MAN A01036 00 A392
black-red



909
1/2 PAIR
8 UK



FIT
MM



SIZE
MAN
7-12,5 UK

LOWER GAITER: Stretch high tenacity nylon and reflex inserts

UPPER GAITER: Stretch polyamide and h. 35 mm elastic

GAITER LINING: mm 2 bi-elastic neoprene

INNER BOOT: Cordura and 2 mm felt

INNER BOOT LINING: Gore-Tex Insulated Comfort Footwear + Gore-Tex Zamba 3L

LASTING BOARD: 3 carbon layers + aluminium net + 3 carbon layers + EVA top

ANATOMIC FOOTBED: Rock memory

SOLE: Vibram 1229 Mulaz + microporous dual-density rubber midsole + PU heel insert + TPU attachment for automatic crampons

MADE: in Europe

RESOLING: The model can get resoled

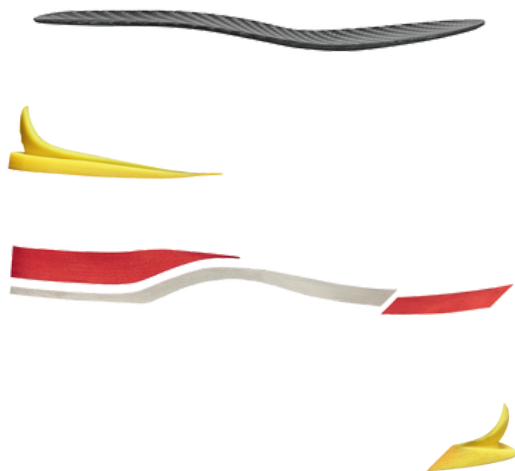
EXPEDITION



Outer Gaiter: It's made of Schoeller Soft Shell that guarantees lightness and resistance to abrasion. The Gore-Tex Insulated Comfort Footwear lining gives insulation, waterproofness and breathability. The YKK zip closure system is fast, waterproof and precise. The PU rand and the front rubber toe gives the maximum protection.



The shell: It's made of four different materials (Cordura, Microfiber, No woven textile, Gore-Tex Insulated Comfort Footwear), it's lightweight, comfortable, protective and supportive. **Fast Lock Lacing System:** these durable, speed laces make it easy to adjust the boots with no need to tie a bow. A simple toggle stopper securely holds the laces in the preferred position. Quick and precise lace up. The anatomic footbed is made of three different layers of protection: textile, memory foam for the best comfort and cushioning and no woven textile



Lasting Board: six layers of carbon fiber = support & stability plus an anti-torsional action and the greatest rigidity.

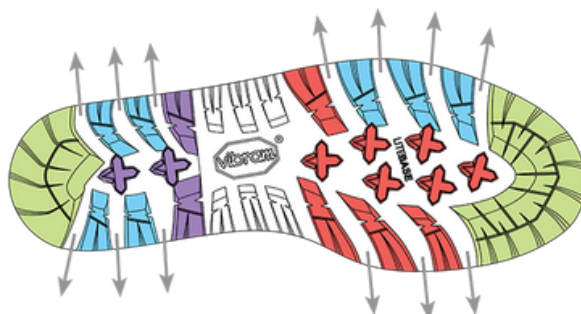
TPU insert: adaptability for automatic crampon

Mono density dual color microporous midsole: stability, support, cushioning and comfort

TPU insert: adaptability for automatic crampon



Outsole: Vibram Litebase rubber with Vibram Mont Compound = Self cleaning, lightness, grip and precision



-  Grip
-  Breakin
-  Traction
-  Stability
-  Self-cleaning

EIGER XT GV EVO

Best use: Fast ice climbing and technical mountaineering.

MAN A01048 00 A392
black-red



700
1/2 PAIR
8 UK



FIT
MM



SIZE
MAN
6,5-12,5 UK

EXTERNAL GAITER: Schoeller Soft Shell

MAIN SHELL UPPER: High tenacity nylon + Schoeller Soft Shell + microfiber

LINING: Gore-Tex Insulated Comfort Footwear

LASTING BOARD: Carbon fiber and cover in EVA

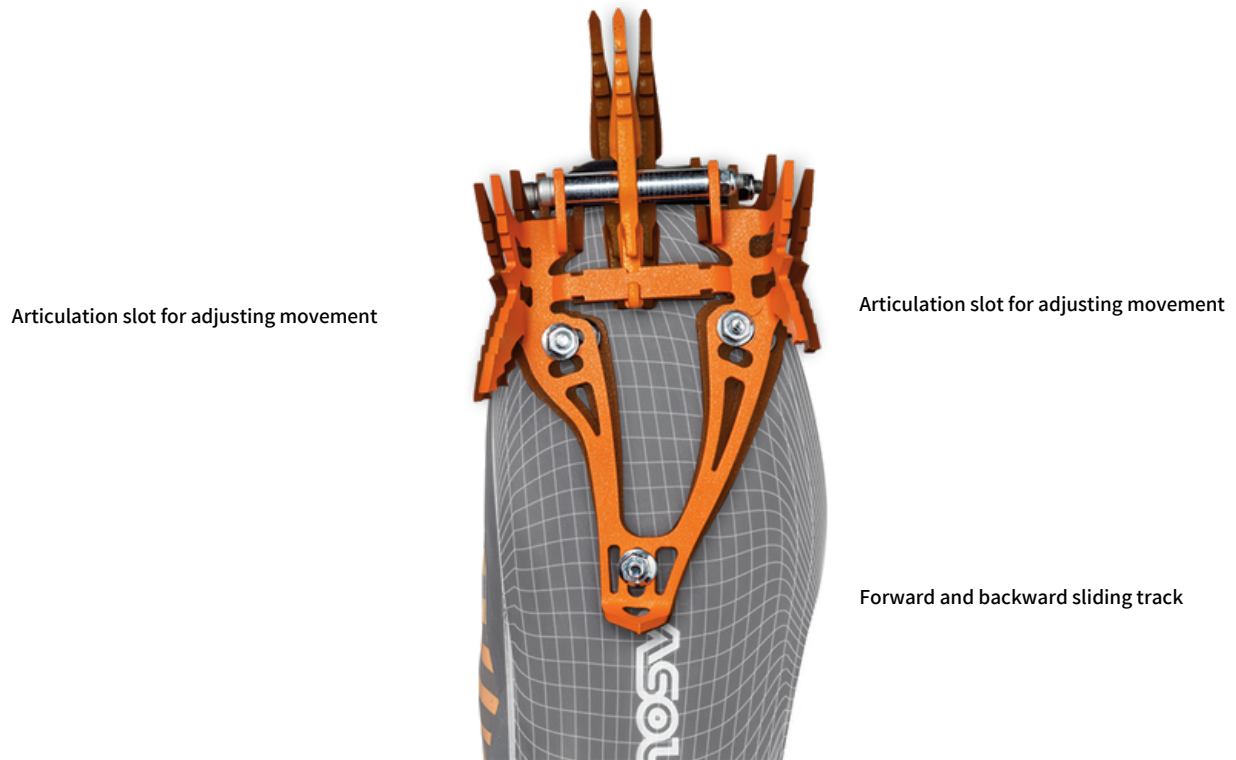
ANATOMIC FOOTBED: Rock Memory

SOLE: Vibram Litebase with Mont Compound; Dual color microporous midsole + Tpu crampon attachments

MADE: in Europe

RESOLING: The model can get resoled

EXPEDITION

**THE D-LYNX CRAMPON:**

An innovative technical crampon born from the collaboration between two leaders brands in this sector. It creates a highly precise and customized crampon adjustment.

The articulation slot C serves as a barycenter for the front structure, which working in conjunction with points A and B enables to move forward and backward. In this way, you have a 7 mm spur's extent. It is also developed in order to enable a 2,5° lateral rotation (both inside and outside).

This new system allows adjustability in different positions and fine tuning by user.

COMP XT EVO

Best use: Fast ice climbing on mixed surfaces and competitions.

MAN A01050 00 A392
black-red



646
1/2 PAIR
8 UK



FIT
MM



SIZE
MAN
6,5-12,5 UK

OUTER GAITER: Schoeller Soft Shell

UPPER: Microfiber

LINING: Velveteen

LASTING BOARD: Carbon fiber + fiber glass

ANATOMIC FOOTBED: Lite 1

SOLE: Asolo

CRAMPON: D-Lynx Petzl

MADE: in Europe

EXPEDITION



Shell: in Pebax = it gives strength and resistance to extreme low temperatures



Inner Boot: anatomically shaped inner boot made of polyurethane and polyethylene mm.3



Lasting Board: Asoframe: Pebax = it uses a single moulded structure combining the midsole, the heel counter and toe box



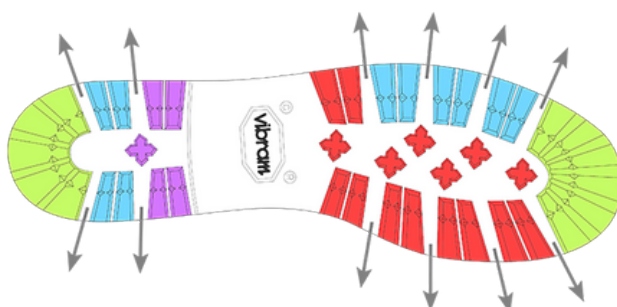
Carbon fiber + fiber glass skeleton



Heel insert in microporous rubber



Outsole: Vibram Nilgiri dual color rubber outsole = Grip and precision + adaptability to automatic crampons



- Grip
- Breaking
- Traction
- Stability
- Self-cleaning

AFS 8000

Best use: Scrambling on ice-walls and ice falls.

MAN 0M4002 562
black-yellow



1.333
1/2 PAIR
8 UK



FIT
MM



SIZE
MAN
6,5-12,5 UK

SHELL: Pebax

INNER BOOT: Velveteen and Thinsulate

ASOFRAME: Pebax

ANATOMIC FOOTBED: AFS

SOLE: Vibram Nilgiri dual-color

MADE: in Europe

RESOLING: The model can get resoled





DEFINITION OF ALPINE-MOUNTAINEERING:

Alpine mountaineering is practiced in medium-size mountains, as a general rule, mountaineers require the use of technical equipment such as rope, harness, crampons and a mountaineering boot.

Alpine mountaineers pack light and move quick and they make a swift push to the peak. This is possible as medium sized mountains like the Alps or the Rocky Mountains, can be scaled relatively more quickly.

Four main attributes define this category of footwear:

Fit: your feet are your most important asset and factor to consider. You will be wearing your boots for multiple hours and carry heavy loads. The last for the Freney Family is broadly defined by men's and woman's with specific anatomical features sculpted to match defined user criteria and fit characteristics.

Weight: in mountaineering or mixed climbing weight is important. The less weight we carry, the more efficient we can be in the mountains. Therefore, something to carefully consider is the weight of your boots. For this Freney Family, we used materials that combine durability, performance and lightness.

Upper material: the uppers design, materials and construction guarantee a good flexibility for any mountaineering and climbing activity. Made with Perwanger leather, waterproof membrane for weather protection and high tenacity fabric.

Crampon compatibility: the boots are compatible with a wider variety of semi-automatic crampons.

MOUNTAINEERING - Consumer Profile



BEST USE: Lightweight boot for fast and light technical mountaineering, via ferrata and challenging backpacking with heavy loads. Compatible with semi-automatic crampons.

CONSUMER PROFILE

Gender:
Women & Man

Age:
18-45

CONSUMER TARGET:

Climbers
Mountain guides
Rescuers
Backpacker

CONSUMER PROFILE EXPECTATIONS:

1. Weight
2. Comfort
3. Climbing ability
4. Support & Traction
5. Crampon Compatibility
6. Design

PERFORMANCE MOUNTAINEERING - Asolo Solutions:



MOUNTAINEERING ABILITY:

The Freney Evo Family enhances essential mountaineering (climbing and backpacking) techniques. The characteristics inherited from climbing are: edging, the ability stand on small rock ledges and smearing. While, the characteristics inherited from backpacking are: great support through a boot that absorbs shocks and adequately protect your foot from the elements for carrying heavy loads and comfort intended as protection and performance, alongside with softness.



COMFORT:

The Asolo comfort is determined by the use of a completely dedicated last, the use of high technical materials and through the development of an outsole package that guarantees support, performances and comfort for the required needs.



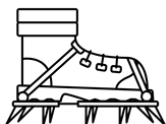
SUPPORT & TRACTION:

Foot support is most important when carrying heavy loads; through the study of a new outsole package Asolo gives the correct support, cushioning, grip and performances in its Freney Evo Family line. In addition, all the Freney Evo line is engineered with the Asoflex which provide torsional stability and control while protecting against impact and bruises on rocks and uneven terrain. Self-cleaning rubber outsoles with deeper channels, provide dependable traction on rough terrain.



WEIGHT:

In mountaineering or mixed climbing weight is important. The less weight we carry, the more efficient we can be in the mountains. Therefore, something to carefully consider is the weight of your boots. For this Freney Family, we used materials that combine durability, performance and lightness.



CRAMPON COMPATIBILITY

The boots are compatible with a wide variety of semi-automatic crampons.



DESIGN

Our in-house designers work with trusted manufactures from initial concept to final product to build pieces that bring a one-of-a-kind stamp to a project.

PERFORMANCE MOUNTAINEERING - Technologies:

**FIT:**

From the beginning Asolo's philosophy has been to develop innovative and technologically advanced footwear with great looks following the correct morphology of the feet. Asolo pays particular attention to the natural flex of the foot while also making sure that performance and comfort of its footwear is maximized. In the whole Asolo collection, the lasts are broadly defined by men's, women's and child's fit, but also include narrow, normal and wide fit option in key styles. Following our fit philosophy, Asolo engineered and developed two completely new last. The new Asolo lasts have been studied for the Performance Approach Line and includes a completely dedicated last for Man following the morphology, volumes and anatomical shape of his foot and a completely dedicated last for Woman following the morphology, volumes and anatomical shape of woman's foot.

**WATERPROOFNESS & BREATHABILITY:**

In 1959, Bill and Genevieve Gore launch W. L. Gore & Associates in the basement of their home in Newark, Delaware. Today is recognized as the finest waterproof and breathable material in the world. To ensure the highest quality and safety, Gore-Tex work with independent, credible third-party standards "bluesign®". Asolo's shoes are certified by Gore-Tex and every pair made are 100% product tested. Gore-Tex new laminated is engineered with recycled material which assures waterproofness and breathability. Water stays on the outside while perspiration can easily escape from the inside.

**TRACTION:**

In 1935, tragedy drives Vitale Bramani to develop an outsole capable of excellent traction on mixed surfaces. Using vulcanized rubber technology, he developed the Carrarmato design. The design was soon famous. Even today, it remains one of the most used soles by mountain climbers. Asolo's footwear are made using outsole designed by Asolo and made by Vibram. Vibram Mont compound has been tested in the world's peaks - it is a firmer compound for maximum support and durability, plus, it maintains supreme performances at extremely low temperatures. Maintains performance at extremely low temperatures.

**DURABILITY:**

The Perwanger Leather Tannery was founded in 1780 in the unique and breath-taking Alpine landscape of the Dolomites, which is now a UNESCO World Heritage Site. The art and craft of tanning has been handed down from father to son for more than five generations and over two hundred years. The name Perwanger stands for innovation and long-lasting premium quality in leather production. In the early 70s, after many attempts and driven by his passion for mountains hikes, Josef Perwanger could give the water repellent properties to his leathers. Until then the climbers were forced to impregnate their boots with grease. Suede Nepal Perwanger was born. Thanks to the excellent water resistance and breathability and unique producing methods, the suede Nepal Perwanger is gradually into large-scale adopted in the mountain footwear, leisure and security shoes. Four main straight points: water-resistant, scratch resistant as the special fiber of Perwanger leather makes possible that even the sharper rocks do not leave deep signs on your new shoes, breathable as all the leathers work as natural membrane and do not allow water to pass but let the foot inside can breathe freely and long life as the pressing technique make the leather and your shoes remain unchanged for a long time.

MOUNTAINEERING

**Lateral Shell:**

It's made of injected TPU and designed following the heel morphology. It's designed and developed only for the outside of the boot and with minimum thickness.

Benefits:

It enhances the heel support. It works as a lateral and upper heel protection.

**Heel Locking:**

It's made by rubber and designed following the heel morphology. It's developed and integrated with the lateral rubber rand.

Benefits:

It's an innovative heel support and it gives an additional stability and protection to the upper and heel.

**"V" design collar:**

The rear part of the collar shows a "V" design which has been developed following the morphology of the feet.

Benefits:

It perfectly lock the ankle and improve the movements and comfort during activities.

**Pivot points:**

The upper collar is developed to be flexible and the front and rear pivot points works together with the lower upper.

Benefits:

More freedom of movement, flexibility and comfort during the activities.

**The rear fitting line:**

It is shaped following the last which reflect the perfect morphology of the feet and the perfect heel shape.

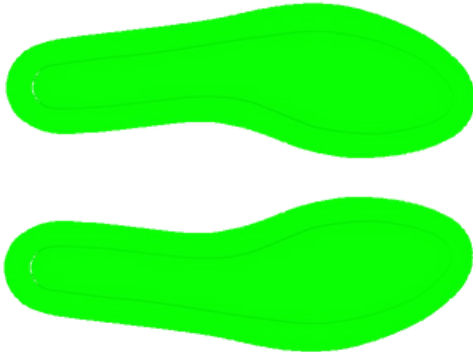
- A. Rear Pivot line
- B. Heel Locking line
- C. Lateral Shell line

**Closure system:**

The closure system can be divided into three main areas which are the following:

1. The upper collar area with the metal hardware lacing system for a precise closure.
2. The front pivot point area with the webbing speed lacing system which allows the free ankle movements and no pressure in the ankle area.
3. The instep area with the metal hardware lacing system for a precise closure.

MOUNTAINEERING

**Lasting board: Duo Asoflex**

It's an Asolo world wide patent.

It is made of a first layer of EVA and a second layer of nylon + 30% fiber glass.

It's designed following the Asolo last and the Vertical outsole.

It improves the torsion resistance, the insulation, the protection and the comfort.



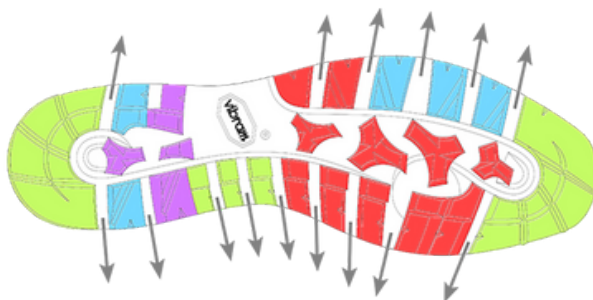
Frame + Pebax rear crampon attachment : stability, support and adaptability to crampons



Shock absorbing PU insert: cushioning



Outsole: Asolo/Vibram Vertical rubber outsole = grip and precision and adaptability to semi automatic crampons.



-  Grip
-  Breaking
-  Traction
-  Stability
-  Self-cleaning

ALTA VIA GV

Best use: Technical use on high altitude terrain and ice.

MAN A01020 00 A388
black-green



987
1/2 PAIR
8 UK



FIT
MM



SIZE
MAN
7-12,5 UK

UPPER: Water-resistant Perwanger leather mm 2,2-2,4

LINING: Gore-Tex Insulated Comfort Footwear

LASTING BOARD: Duo Asoflex Ascent in nylon loaded with fiber glass + Eva cover

ANATOMIC FOOTBED: Lite 3

SOLE: Asolo/Vibram Verical + Pebax Frame + PU IAnti-Shock insert

MADE: in Europe

RESOLING: The model can get resoled

SUSTAINABILITY: The leather meet the standard by Oeko Tex

6B+ GV

Best use: Technical use on high altitude terrain and ice.

MAN A01018 00 A388
black-green



WOMAN A01019 00 A388
black-green



965
1/2 PAIR
8 UK



FIT
MM-ML



SIZE
MAN
7-12,5 UK

SIZE
WOMAN
4,5-8 UK

UPPER: Water resistant Schoeller K-Tech Micro Tech and microfibre

LINING: Gore-Tex Insulated Comfort Footwear

LASTING BOARD: Duo Asoflex Ascent in nylon loaded with fiber glass + Eva cover

ANATOMIC FOOTBED: Lite 3

SOLE: Asolo/Vibram Verical + Pebax Frame + PU Anti-Shock insert

MADE: in Europe

RESOLING: The model can get resoled

FRENEY EVO - Fit Technology

From the beginning Asolo's philosophy has been to develop innovative and technologically advanced footwear with great looks following the correct morphology of the feet. Asolo pays particular attention to the natural flex of the foot while also making sure that performance and comfort of its footwear is maximized. In the whole Asolo collection, the lasts are broadly defined by men's, women's and child's fit, but also include narrow, normal and wide fit option in key styles.

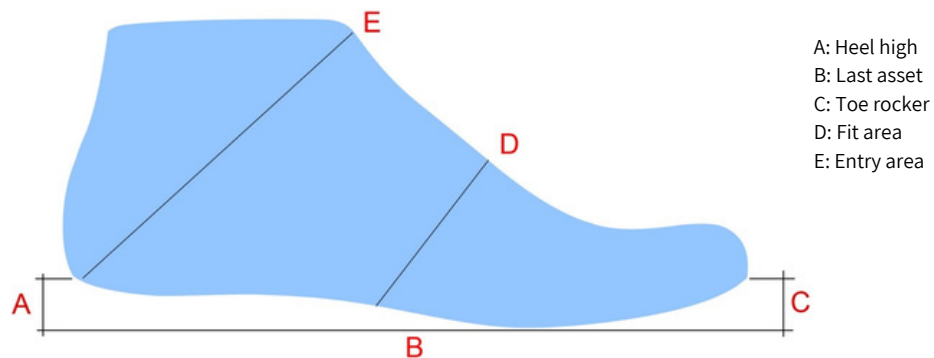
ASOLO ROCK LAST:

Following our fit philosophy, Asolo engineered and developed the Rock last.

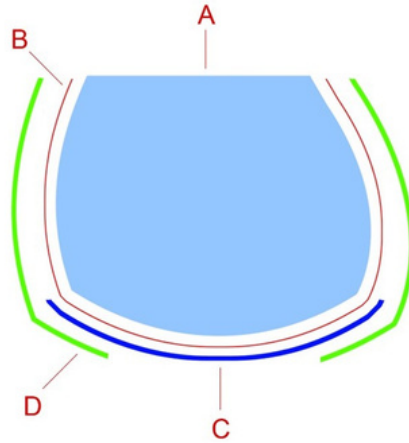
The last have been studied for the **Freney Evo Line** and includes a completely dedicated last for Man following the morphology, volumes and anatomical shape of his foot and a completely dedicated last for Woman following the morphology, volumes and anatomical shape of woman's foot.

The Asolo Rock last reflect all the characteristics of the new line assuring great comfort, the correct posture and distributed volumes.

The fit difference between the Man Last and Woman Last is 5 mm on the ball area.



FRENEY EVO - Construction Technologies:



LASTED CONSTRUCTION:

This sophisticated and time-consuming technique involves the shoemaker pulling the upper over the last and downwards over the insole and affixing this to create a unit. The midsole and outsole are then applied.

The line Freney Evo is engineered with the lasted construction.

BENEFITS:

> The key advantage is that deliver torsional rigidity and support without encumbering underfoot cushion.

A : Last
B : Gore-Tex lining
C : Lasting board Asoflex
D : Upper

FRENEY EVO - Lasting Boards Technologies:



HIGH CUT ASOFLEX



MID CUT ASOFLEX

FRENEY EVO LASTING BOARD:

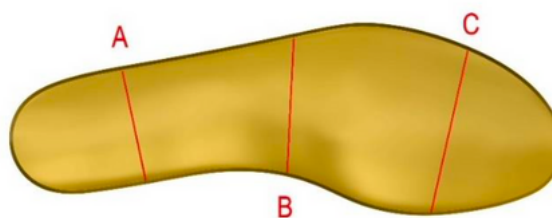
For the Freney Evo line we engineered two different lasting boards: one for the over the ankle models and one for the mid-cut models.

Both lasting boards have been engineered following exactly the shape of the last.

The two have been differentiated and developed by using different materials:

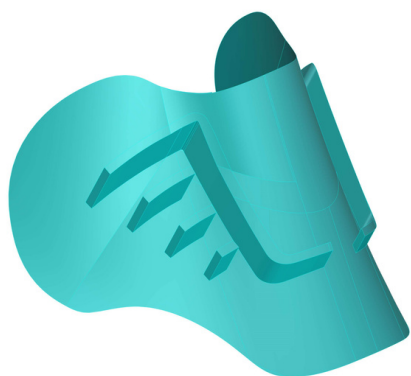
- For the Freney Evo models the Asoflex is made of injected nylon plus 30% of fiber glass
- For the Freney Evo Mid models the Asoflex is made of polypropylene

BOTTOM VIEW SECTION:



| Thickness difference | | | | |
|----------------------|-----|--------|--------|--------|
| | | mm. | mm. | mm. |
| | | A | B | C |
| High cut | | 5,70 | 5,70 | 5,80 |
| Low cut | | 2,60 | 4,00 | 3,90 |
| Difference | mm. | - 3,10 | - 1,70 | - 1,90 |
| (mid cuts) | % | -54% | -30% | -33% |

FRENEY EVO - Tongue & Collar Construction



ASOLO ZHEN 3D TONGUE:

The tongue is made with a 3D thermo-shaped technology following the precise fit morphology of man and woman.

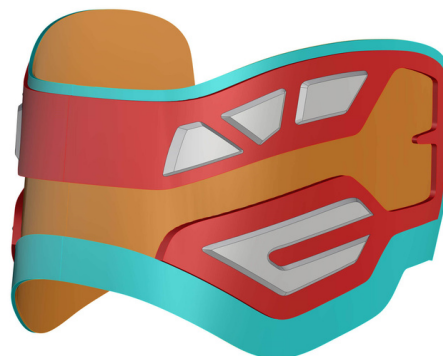
It is made of the following three materials:

Outside layer: Lycra
Middle layer: Pu foam
Inside layer: bi-elastic material

The three materials together gives the following benefits:

- perfect adaptability to the collar area thanks to the 3D construction and the reduced thickness of the materials
- immediate and supreme comfort through the use of three soft materials
- reduced weight thanks to the new 3D construction

This technology is used for all the models of the new Freney Evo line.



ASOLO ZHEN 3D COLLAR & ANKLE:

The collar & ankle are made with a 3D thermo-shaped technology following the precise collar & ankle fit morphology of man and woman.

It is made of the following three materials:

Outside layer: Lycra
Middle layer: Pu foam
Inside layer: bi-elastic material

The three materials together gives the following benefits:

- perfect adaptability to the ankle area thanks to the 3D construction and the reduced thickness of the materials
- immediate and supreme comfort through the use of three soft materials
- reduced weight thanks to the new 3D construction
- perfect support and flexibility in the ankle area

This technology is used for all the models of the new Freney Evo line - in the Mid-cut models the technology is the same, but the height of the collar and the design is different in order to follow the mid-cut characteristics of the models.

FRENEY EVO - Footbeds Technologies:



ASOLO FOOTBED:

The footbeds are the result of an important study and they have been engineered completely by Asolo.

The footbeds follow the exact design of the last and the lasting board.

They are made with four different materials (top velveteen, Eva, non-woven textile, PU heel support) and using different thickness from rear to the front part for giving extreme comfort for all day wear.

A: Thermo mould PE heel support

B: Non-woven textile

BENEFITS:

The Asolo footbed provides an extreme cushioning and anatomically designed support.

The internal foam created a cooler, drier, healthier, better cushioned environment under the foot.

The technologies and proprieties of the footbeds will not break down or lose effectiveness over time.

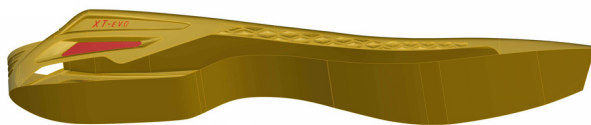
The Eva heel cups allow for a better heel support and add cushioning.

FRENEY EVO - Outsole Technology

Foot support is most important when carrying heavy loads; through the study of a new outsole package Asolo gives the correct support, cushioning, grip and performances in its Freney Evo Family line.



TPU insert: the cramponable insert it is co-injected with the polyurethane midsole with differentiated thickness for achieving the maximum lightness



Shock absorber: low density Eva heel insert for cushioning.

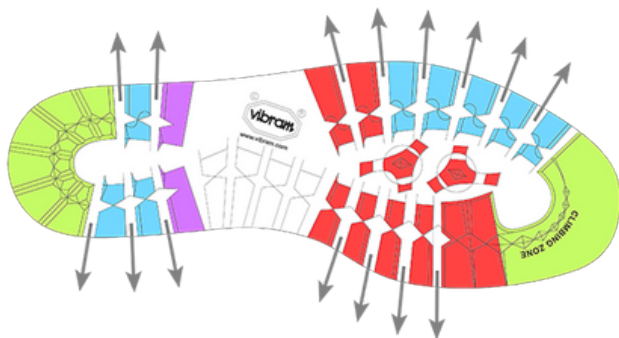
Pu midsole: mono density polyurethane for the maximum support, stability and lightness.



Pu film: protective Pu film on the midsole for promoting prolonged use of the products.



Outsole: Vibram 1229 Mulaz rubber outsole presents a self-cleaning design and an amazing front climbing zone, plus, it uses the Mont compound for superior traction and excellent grip on a wide variety of terrains.



-  Grip
-  Breaking
-  Traction
-  Stability
-  Self-cleaning

FRENEY EVO LTH GV

Best use: Light and comfortable leather boot designed for various activities like alpine hiking, via ferrata and demanding treks with heavy packs. Compatible with semi-automatic crampons.

MAN A01072 00 A627
graphite-green lime



MAN A01072 00 B127
major brown-red



WOMAN A01073 00 B128
graphite-sea blue



761
1/2 PAIR
8 UK



FIT
MM-ML



SIZE
MAN
7-12,5 UK

SIZE
WOMAN
4,5-8 UK

UPPER: Water resistant Perwanger leather 2,2-2,4

LINING: Gore-Tex Performance Comfort Footwear

LASTING BOARD: Asoflex Spiky in nylon and fiberglass

ANATOMIC FOOTBED: Lite 4

SOLE: Vibram 1229 Mulaz + shock resistant PU midsole + Eva in the heel area + Tpu crampon inserts

MADE: in Europe

RESOLING: The model can get resoled

SUSTAINABILITY: The leather meet the standard by Oeko Tex

FRENEY EVO GV

Best use: Light and comfortable leather-fabric boot designed for various activities like alpine hiking, via ferrata and demanding treks with heavy packs. Compatible with semi-automatic crampons.

MAN A01068 00 A627
graphite-green lime



MAN A01068 00 B127
major brown-red



WOMAN A01069 00 B128
graphite-sea blue



744
1/2 PAIR
8 UK



FIT
MM-ML



SIZE
MAN
7-12,5 UK

SIZE
WOMAN
4,5-8 UK

UPPER: Water resistant Perwanger leather 2,2-2,4 + high tenacity fabric

LINING: Gore-Tex Performance Comfort Footwear

LASTING BOARD: Asoflex Spiky in nylon and fiberglass

ANATOMIC FOOTBED: Lite 4

SOLE: Vibram 1229 Mulaz + shock resistant PU midsole + Eva in the heel area + Tpu crampon inserts

MADE: in Europe

RESOLING: The model can get resoled

SUSTAINABILITY: The leather meet the standard by Oeko Tex

FRENEY EVO MID LTH GV

Best use: Light and comfortable mid cut leather boot designed for various activities like alpine hiking, via ferrata and demanding treks with heavy packs. Compatible with semi-automatic crampons.

MAN A01074 00 A627
graphite-green lime



MAN A01074 00 B127
major brown-red



WOMAN A01075 00 B128
graphite-sea blue



663
1/2 PAIR
8 UK



FIT
MM-ML



SIZE
MAN
7-12,5 UK

SIZE
WOMAN
4,5-8 UK

UPPER: Water resistant Perwanger leather 2,2-2,4

LINING: Gore-Tex Performance Comfort Footwear

LASTING BOARD: Asoflex Rock Mid in polypropylene

ANATOMIC FOOTBED: Lite 4

SOLE: Vibram 1229 Mulaz + shock resistant PU midsole + Eva in the heel area + Tpu crampon inserts

MADE: in Europe

RESOLING: The model can get resoled

SUSTAINABILITY: The leather meet the standard by Oeko Tex

FRENEY EVO MID GV

Best use: Light and comfortable mid cut leather-fabric boot designed for various activities like alpine hiking, via ferrata and demanding treks with heavy packs. Compatible with semi-automatic crampons.

MAN A01070 00 A627
graphite-green lime



MAN A01070 00 B127
major brown-red



WOMAN A01071 00 B128
graphite-sea blue



671
1/2 PAIR
8 UK



FIT
MM-ML



SIZE
MAN
7-12,5 UK

SIZE
WOMAN
4,5-8 UK

UPPER: Water resistant Perwanger leather 2,2-2,4 + high tenacity fabric

LINING: Gore-Tex Performance Comfort Footwear

LASTING BOARD: Asoflex Rock Mid in polypropylene

ANATOMIC FOOTBED: Lite 4

SOLE: Vibram 1229 Mulaz + shock resistant PU midsole + Eva in the heel area + Tpu crampon inserts

MADE: in Europe

RESOLING: The model can get resoled

SUSTAINABILITY: The leather meet the standard by Oeko Tex





PERFORMANCE APPROACH



DEFINITION OF APPROACH SHOES BY WIKIPEDIA:

Approach shoes are hybrid footwear that have some characteristics in common with hiking boots and others with rock-climbing shoes.

Like a shoe or boot designed for hiking, a properly fitting approach shoe can be worn comfortably while walking for long distances.

Like a climbing shoe, it generally has a specialized sticky rubber sole which maintains traction on steeper grades of rock.

On more extreme terrain, or when carrying heavier loads, it supports neither task as well as more specialized footwear would.

DEFINITION OF APPROACH SHOES BY ASOLO:

Approach shoes are special products. Designed for rock climbers who require unique features in footwear they use to go to and from boulders, cliff and mountains where they practice the art of climbing.

Two main attributes define this category of footwear:

Durable Upper Material: approach shoes usually feature a stick rubber toe rand that comes up high on the front of the shoe to protect them while edging, smearing, or ascending a fixed-line. We improve the uppers with highly technical fabric or leather material.

Sticky Rubber Outsole: all our products utilize a Vibram MegaGrip rubber soles that prioritize stickiness on rock in a wet and dry conditions. The rubber compound are softer than the ones used for hiking boots and shoes, generating more friction on rocks. These Vibram MegaGrip rubber outsoles give us confidence that our feet will stay put on step rock slabs.

PERFORMANCE APPROACH - Consumer Profile



BEST USE: Light and agile boot designed for technical approaches and day hikes.

CONSUMER PROFILE

Gender:
Women & Man

Age:
18-45

CONSUMER TARGET:

Climbers and adrenaline junkies
Adventurous travelers
Active people
Connected to nature

CONSUMER PROFILE EXPECTATIONS:

1. Climbing Ability
2. Comfort
3. Support & Traction
4. Weight & Packability
5. Design

PERFORMANCE APPROACH - Asolo Solutions:



CLIMBING ABILITY:

The new Asolo Performance Approach line enhances the three essential climbing technique. Edging, the ability stand on small rock ledges, smearing, sticking to steep rock that is devoid to any features and crack climbing the forcing of your toe into vertical fissures in the rock and twisting your foot to lock in place.



COMFORT:

The Asolo comfort is determined by the development of a completely new dedicated last, the use of high technical materials and through the development of a new outsole package that guarantees support and comfort for the required needs.



SUPPORT & TRACTION:

Foot support is most important when carrying heavy loads, but even a "rope and rack on your back" weight a fair bit. A more supportive shoe means less pain when the approaches get long and the pack gets heavy. Through the study of a new outsole package Asolo gives the correct support, grip and performances in its new line of products.



WEIGHT & PACABILITY

Weight is always an important consideration for us here at Asolo; weight is a primary concern when you clip them or stow them in your pack. For this, in our new line we achieved a unique weight without compromising the performances.



DESIGN

Our in-house designers work with trusted manufactures from initial concept to final product to build pieces that bring a one-of-a-kind stamp to a project.

PERFORMANCE APPROACH - Technologies:

**FIT:**

From the beginning Asolo's philosophy has been to develop innovative and technologically advanced footwear with great looks following the correct morphology of the feet. Asolo pays particular attention to the natural flex of the foot while also making sure that performance and comfort of its footwear is maximized. In the whole Asolo collection, the lasts are broadly defined by men's, women's and child's fit, but also include narrow, normal and wide fit option in key styles. Following our fit philosophy, Asolo engineered and developed two completely new last. The new Asolo lasts have been studied for the Performance Approach Line and includes a completely dedicated last for Man following the morphology, volumes and anatomical shape of his foot and a completely dedicated last for Woman following the morphology, volumes and anatomical shape of woman's foot.

**WATERPROOFNESS & BREATHABILITY:**

In 1959, Bill and Genevieve Gore launch W. L. Gore & Associates in the basement of their home in Newark, Delaware. Today is recognized as the finest waterproof and breathable material in the world. To ensure the highest quality and safety, Gore-Tex work with independent, credible third-party standards "bluesign®". Asolo's shoes are certified by Gore-Tex and every pair made are 100% product tested. Gore-Tex new laminated is engineered with recycled material which assures waterproofness and breathability. Water stays on the outside while perspiration can easily escape from the inside.

**TRACTION:**

In 1935, tragedy drives Vitale Bramani to develop an outsole capable of excellent traction on mixed surfaces. Using vulcanized rubber technology, he developed the Carrarmato design. The design was soon famous. Even today, it remains one of the most used soles by mountain climbers. Asolo's footwear are made using outsole designed by Asolo and made by Vibram. Vibram Mega Grip is cutting-edge technology that represents the most advanced traction system for wet and dry surfaces that Vibram has ever created. Mega Grip technology is made entirely of rubber material without the addition of metal components or inserts. Unmatched technology on wet surfaces and exceptional durability are the main advantages of the compound.

**COMFORT**

OrthoLite started in 1997 when the founder Glenn Barrett, a lifelong footwear entrepreneur, had identified a need that had long been overlooked in the footwear industry combined with a timely flash of inspiration. Glenn knew the interior environment of the shoe had not been addressed and while on a sourcing trip to Taiwan, he was introduced to an innovative new open-cell PU foam that was the ideal technology to solve the problems occurring inside the shoe. Seeing its remarkable characteristics, he realized it would make the perfect insole solution—outperforming other materials in every measurable way. He got to work and formulated his first batch of prototypes—making a better insole that was more comfortable, but one that also provided a cooler, drier, and healthier interior environment of the shoe that was also easier on the planet by using 5% recycled outsole rubber waste material in the mix.

The new anatomical footbeds for the Performance Approach Line are the result of the partnership between Asolo and Ortholite. They differentiate by man and women and they follow the design of the new Performance Approach last and lasting board.

PERFORMANCE APPROACH - Fit Technology

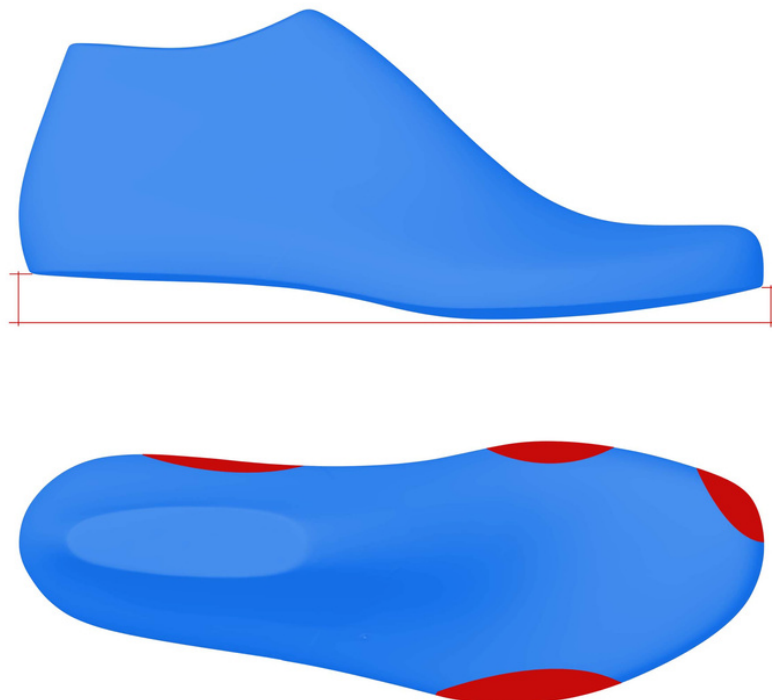
From the beginning Asolo's philosophy has been to develop innovative and technologically advanced footwear with great looks following the correct morphology of the feet. Asolo pays particular attention to the natural flex of the foot while also making sure that performance and comfort of its footwear is maximized. In the whole Asolo collection, the lasts are broadly defined by men's, women's and child's fit, but also include narrow, normal and wide fit option in key styles.

ASOLO AG LAST:

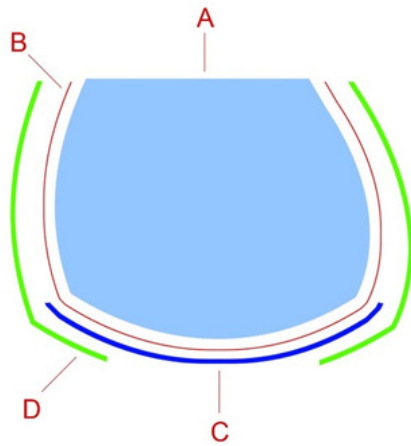
Following our fit philosophy, Asolo engineered and developed two completely new last.

The new Asolo lasts have been studied for the **Performance Approach Line** and includes a completely dedicated last for Man following the morphology, volumes and anatomical shape of his foot and a completely dedicated last for Woman following the morphology, volumes and anatomical shape of woman's foot.

The new Asolo last reflect all the characteristics of the new line assuring great comfort, the correct posture and distributed volumes.



PERFORMANCE APPROACH - Construction Technologies:



LASTED CONSTRUCTION:

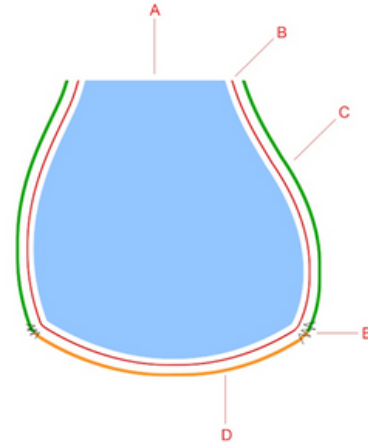
This sophisticated and time-consuming technique involves the shoemaker pulling the upper over the last and downwards over the insole and affixing this to create a unit. The midsole and outsole are then applied.

The model Eldo Mid LTH GV and Eldo Mid GV are engineered with the lasted construction.

BENEFITS:

> The key advantage is that deliver torsional rigidity and support without encumbering underfoot cushion.

A : Last
B : Gore-Tex lining
C : Lasting board Asoflex
D : Upper



SLIP LASTED CONSTRUCTION:

Named after its inventor, the Strobel seam is used sew the insole to the upper. The sole unit is then applied. This technique is mainly used for running shoes and trainers as these have to be very flexible. Footwear made by strobel construction are obvious if you take out the insole which reveals the Strobel seam from the insole to the upper.

The models Eldo LTH GV, Eldo LTH, Eldo GV & Eldo are engineered with the slip lasted (strobel) construction.

BENEFITS:

> The key advantages of the slip lasted construction shoes are the super lightweight and flexibility.

A : Last
B : Gore-Tex lining
C : Upper
D : Lasting board
E : Strobel stitching

PERFORMANCE APPROACH - Footbeds Technologies:



MAN FOOTBED



WOMAN FOOTBED

ASOLO-ORTHOLITE FOOTBEDS:

The new Approach footbeds are the result of the partnership between Asolo and OrthoLite.

They differentiate by man and women and they follow the design of the new Approach last and lasting board.

The Approach footbeds deliver reliable underfoot comfort for all day wear.

The top part is made in antibacterial velveteen while the lower part is made of recycled material.

BENEFITS:

Eco-Friendly: All OrthoLite foams contain 5% recycled rubber, helping keep hundreds of tons of waste out of landfills each year.

Moisture Management: The unique open-cell structure of OrthoLite foam creates a moisture management system, helping to move moisture away and provide a cooler, drier, healthier environment in any application.

Lightweight: OrthoLite foams are extremely lightweight—enhancing performance with day-in, day-out airy comfort.

Long-term cushioning: Unlike traditional foam, OrthoLite® foam compresses less than 5% over the lifetime of the product—so the cushioning, fit, comfort and performance never change.

High-level breathability: OrthoLite foam's open-cell PU technology is 95% to 100% breathable, allowing air to circulate in and around the foam, keeping the surrounding environment cooler.

Washable: OrthoLite foams are machine washable, coming out like new every time while maintaining all of the comfort and performance benefits after washing.

PERFORMANCE APPROACH - Outsole Technology

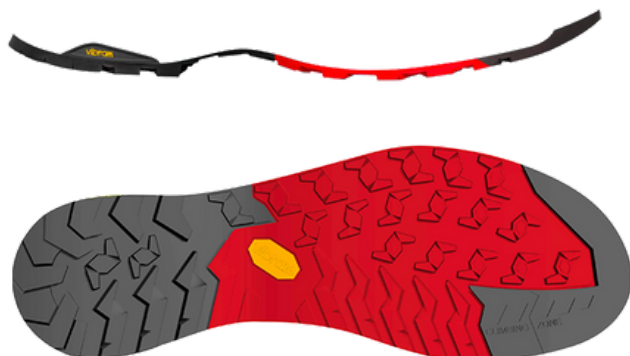
Foot support is most important when carrying heavy loads, but even a "rope and rack on your back" weight a fair bit. A more supportive shoe means less pain when the approaches get long and the pack gets heavy. Through the study of a new outsole package Asolo gives the correct support, grip and performances in its new line of products.



PU Asolite: Additional protection all around
The Pu AsoLite rand is applied over the Eva midsole which assures additional protection all-around while on activity

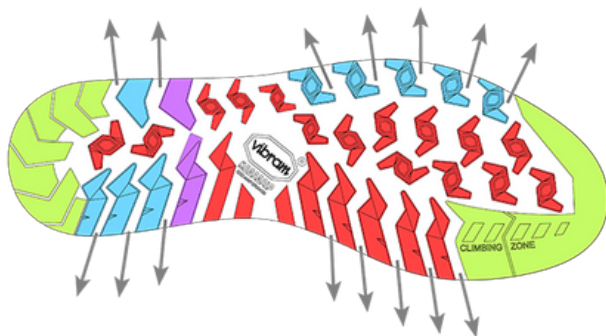


Molded Eva midsole: Guarantees the best support, stability and shock absorbers.
The midsole package is designed around the last and made by mono-density bi-color moulded Eva.



Outsole: Asolo/Vibram AG rubber outsole with MegaGrip compound = Superior traction and excellent grip on a wide variety of terrains.

The outsole package is designed around the last and is the result of the partnership between Asolo and Vibram. It presents a self-cleaning design and an amazing front climbing zone; the outsole uses the MegaGrip compound which is a very sticky compound featuring unparalleled grip and performances on wet and dried terrains.



- Grip
- Breaking
- Traction
- Stability
- Self-cleaning

ELDO MID LTH GV

Best use: Light and agile boot designed for technical approaches and day hikes.

MAN A01056 00 B134
tail



MAN A01056 00 B022
graphite-green oasis



MAN A01056 00 A883
truffle



412
1/2 PAIR
8 UK



FIT
MM-ML



SIZE
MAN
7-12,5 UK

SIZE
WOMAN
4-8 UK

UPPER: Water resistant suede mm 1,5-1,7

LINING: Gore-Tex Extended Comfort Footwear

LASTING BOARD: Asoflex AG in polypropylene

ANATOMIC FOOTBED: Asolo/Ortholite

SOLE: Asolo/Vibram AG with MegaGrip compound (rubber-Eva)

MADE: in Asia

RESOLING: The model can get resoled

SUSTAINABILITY: Contains leather from a tannery rated by the Leather Working Group (LWG)

ELDO MID LTH GV

Best use: Light and agile boot designed for technical approaches and day hikes.

WOMAN A01057 00 A939
graphite-blue moon



WOMAN A01057 00 B024
blue fog-mimosa



412
1/2 PAIR
8 UK



FIT
MM-ML



SIZE
MAN
7-12,5 UK

SIZE
WOMAN
4-8 UK

UPPER: Water resistant suede mm 1,5-1,7

LINING: Gore-Tex Extended Comfort Footwear

LASTING BOARD: Asoflex AG in polypropylene

ANATOMIC FOOTBED: Asolo/Ortholite

SOLE: Asolo/Vibram AG with MegaGrip compound (rubber-Eva)

MADE: in Asia

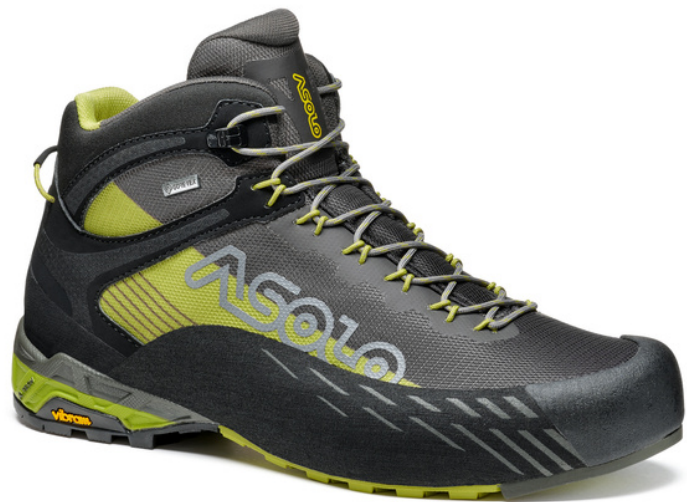
RESOLING: The model can get resoled

SUSTAINABILITY: Contains leather from a tannery rated by the Leather Working Group (LWG)

ELDO MID GV

Best use: Light and agile boot designed for technical approaches and day hikes.

MAN A01066 00 B030
green oasis-smoky grey



MAN A01066 00 A385
black-grey



WOMAN A01067 00 B033
brook green-blue fog



WOMAN A01067 00 B032
celadon-poppy red



398
1/2 PAIR
8 UK



FIT
MM-ML



SIZE
MAN
7-12,5 UK

SIZE
WOMAN
4-8 UK

UPPER: Technical seamless polyester
LINING: Gore-Tex Extended Comfort Footwear
ANATOMIC FOOTBED: Asolo/Ortholite
SOLE: Asolo/Vibram AG with MegaGrip compound (rubber-Eva)
MADE: in Asia

RESOLING: The model can get resoled

ELDO LTH GV

Best use: Light and agile boot designed for technical approaches and day hikes.

MAN A01054 00 B022
graphite-green oasis



MAN A01054 00 B134
tail



MAN A01054 00 A883
truffle



325
1/2 PAIR
8 UK



FIT
MM-ML



SIZE
MAN
7-12,5 UK

SIZE
WOMAN
4-8 UK

UPPER: Water resistant suede mm 1,5-1,7

LINING: Gore-Tex Extended Comfort Footwear

ANATOMIC FOOTBED: Asolo/Ortholite

SOLE: Asolo/Vibram AG with MegaGrip compound (rubber-Eva)

MADE: in Asia

RESOLING: The model can get resoled

SUSTAINABILITY: Contains leather from a tannery rated by the Leather Working Group (LWG)

ELDO LTH GV

Best use: Light and agile boot designed for technical approaches and day hikes.

WOMAN A01055 00 A939
graphite-blue moon



WOMAN A010055 00 B024
blue fog-mimosa



288
1/2 PAIR
5 UK



FIT
MM-ML



SIZE
MAN
7-12,5 UK

SIZE
WOMAN
4-8 UK

UPPER: Water resistant suede mm 1,5-1,7

LINING: Gore-Tex Extended Comfort Footwear

ANATOMIC FOOTBED: Asolo/Ortholite

SOLE: Asolo/Vibram AG with MegaGrip compound (rubber-Eva)

MADE: in Asia

RESOLING: The model can get resoled

SUSTAINABILITY: Contains leather from a tannery rated by the Leather Working Group (LWG)

ELDO LTH

Best use: Light and agile boot designed for technical approaches and day hikes.

MAN A01062 00 B022
graphite-green oasis



WOMAN A01063 00 A939
graphite-blue moon



345
1/2 PAIR
8 UK



FIT
MM-ML



SIZE
MAN
7-12,5 UK

SIZE
WOMAN
4-8 UK

UPPER: Water resistant suede mm 1,5-1,7

LINING: Leather

ANATOMIC FOOTBED: Asolo/Ortholite

SOLE: Asolo/Vibram AG with MegaGrip compound (rubber-Eva)

MADE: in Asia

RESOLING: The model can get resoled

SUSTAINABILITY: Contains leather from a tannery rated by the Leather Working Group (LWG)

ELDO GV

Best use: Light and agile boot designed for technical approaches and day hikes.

MAN A01058 00 A385
black-grey



MAN A01058 00 B029
NON GORE A01060 00 B029
trance buzz-faux pollen



MAN A01058 00 B028
NON GORE A01060 00 B028
yellow-blue moon



MAN A01058 00 B030
NON GORE A01060 00 B030
green oasis-smoky grey



291
1/2 PAIR
8 UK



FIT
MM-ML



SIZE
MAN
7-12,5 UK

SIZE
WOMAN
4-8 UK

UPPER: Technical seamless polyester
LINING: Gore-Tex Extended Comfort Footwear // Velveteen
ANATOMIC FOOTBED: Asolo/Ortholite
SOLE: Asolo/Vibram AG with MegaGrip compound (rubber-Eva)
MADE: in Asia

RESOLING: The model can get resoled

ELDO GV

Best use: Light and agile boot designed for technical approaches and day hikes.

WOMAN A01059 00 B033
NON GORE A01061 00 B033
brook green-blue fog



WOMAN A01059 00 B032
NON GORE A01061 00 B032
celadon-poppy red



248
1/2 PAIR
5 UK



FIT
MM-ML



SIZE
MAN
7-12,5 UK

SIZE
WOMAN
4-8 UK

UPPER: Technical seamless polyester
LINING: Gore-Tex Extended Comfort Footwear // Velveteen
ANATOMIC FOOTBED: Asolo/Ortholite
SOLE: Asolo/Vibram AG with MegaGrip compound (rubber-Eva)
MADE: in Asia

RESOLING: The model can get resoled





BACKPACKING

TRIPLE POWER STRUCTURE

TPS 520 GV EVO
TPS 535 LTH V EVO

MOUNTAIN TREKKING

NUPTSE GV
POWER MATIC 200 GV EVO
SUPERIOR GV
TRAVERSE GV
CORAX GV



BACKPACKING

BACKPACKING



DEFINITION OF BACKPACKING BY WIKIPEDIA:

Backpacking is a form of low-cost, independent travel, which often includes staying in inexpensive lodgings and carrying all necessary possessions in a backpack. Once seen as a marginal form of travel undertaken only through necessity, it has become a mainstream form of tourism.

While backpacker tourism is generally a form of youth travel, primarily undertaken by young people during gap years, it is also undertaken by older people during a career break or retirement.

Backpacker tourism generally, but does not always, include:

- Traveling via public transport, using inexpensive lodging such as hostels or homestays, and other methods of lowering costs.
- A longer duration trip when compared with conventional vacations.
- Backpacker tourism may also include working in various countries for short stints, depending on work permit laws. It can also be undertaken by digital nomads, people who work using technology while living a nomadic lifestyle.
- A search for authenticity. Backpacking is perceived not only as a form of tourism, but a means of education. Backpackers want to experience what they consider the "real" destination rather than a packaged version often associated with mass tourism.
- The desire to take part in or craft a "narrative" around traveling.

DEFINITION OF BACKPACKING BOOTS BY ASOLO:

Backpacking boots are designed to carry heavier loads on multiday trips deep into the backcountry. All our boots have a high cut that wraps above the ankles for excellent support.

Three main attributes define our category of Backpacking products:

Support: a good supportive shoe should have a thick sole to absorb shock and adequately protect your foot from the elements. Be deep enough that the section around your heel holds the shoe onto your foot well. Made from a material that is stiff enough to provide ankle stability.

Comfort: when considering comfort, it is also important to think about what task the shoe is designed to perform. Comfort is therefore protection and performance, alongside softness; boots are ultimately functional items that are designed to protect our feet and enhance our abilities. Comfort is intricately linked to the job the shoe is designed to perform and the consumer's requirements.

Traction: all our Backpacking are engineered with the Asoflex thermoplastic supports provide torsional stability and control while protecting against impact and bruises on rocks and uneven terrain. Self-cleaning Asolo/Vibram rubber outsoles with deeper channels, provide dependable traction on rough terrain. Two different outsoles package have been designed in collaboration with Vibram for achieving the highest traction standards.

BACKPACKING

BACKPACKING - Consumer Profile



BEST USE: Backpacking, trekking on technical terrain and long distance hiking.

CONSUMER PROFILE

They are identified as the type of tourists who pursue authentic experiences and new destinations

Characteristically, backpackers are young. Around 90% are aged under 35, and can be further broken down as follows:

60% aged 18-30, student and Gap Year Travellers

30% aged 27-35, young professional, referred to as Career Breakers

10% aged 50+, post family, sometimes referred to as the Spirited Youth

GENDER:

54% male
46% female

LENGTH OF STAY:

24% - one or two months
76% - stayed over two months

TRIPLE POWER STRUCTURE



High density PU midsole: guarantees the perfect stability and support



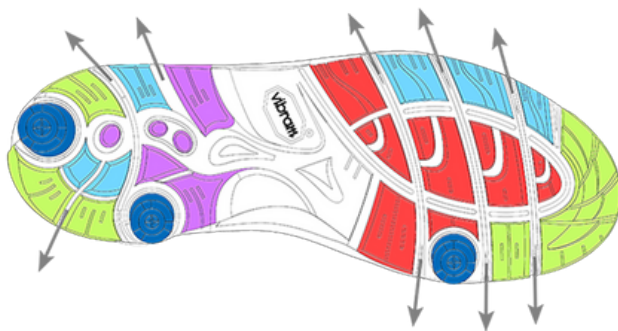
Low density PU midsole: guarantees the best cushioning and comfort








Featuring three shock absorbers created from low density polyurethane: the cylinder in the heel area (external part) is the shock absorber to the first impact of the foot with the ground. The second cylinder in the heel area (inner part) provides stability to the walking gate. The rocker, the final action, is supported by the cylinder in the metatarsal area (inner part) and aids the toe off action.



Outsole: Asolo/Vibram Triple Power Structure rubber outsole = grip, precision and self-cleaning design.



-  Grip
-  Breaking
-  Traction
-  Stability
-  Self-cleaning
-  Shock absorbing

TPS 520 GV EVO

Best use: Backpacking, trekking on technical terrains, long distance hiking.

MAN A11012 00 A635
WIDE FIT MAN A11020 00 A635
chesnut



WOMAN A11013 00 A635
chesnut



817
1/2 PAIR
8 UK



FIT
MM-ML



SIZE
MAN
7-15,5 UK

SIZE
WOMAN
4,5-9 UK

UPPER: Water-resistant full grain leather 2,6-2,8 mm

LINING: Gore-Tex Performance Comfort Footwear

LASTING BOARD: Asoflex 00 MR

ANATOMIC FOOTBED: Lite 2

SOLE: Triple Power Structure Evo Asolo/Vibram rubber - midsole in dual-density PU

MADE: in Europe

OPTION: Wide Fit

RESOLING: The model can get resoled

SUSTAINABILITY: Contains leather from a tannery rated by the Leather Working Group (LWG)

TPS 535 LTH V EVO

Best use: Backpacking, trekking on technical terrains, long distance hiking.

MAN A11016 00 A519
WIDE FIT MAN A11022 00 A519
brown



WOMAN A11017 00 A519
brown



791
1/2 PAIR
8 UK



FIT
MM-ML



SIZE
MAN
7-15,5 UK

SIZE
WOMAN
4,5-9 UK

UPPER: Water-resistant full grain leather 2,6-2,8 mm

LINING: Cambrelle

LASTING BOARD: Asoflex 00 MR

ANATOMIC FOOTBED: Lite 2

SOLE: Asolo/Vibram Triple Power Structure Evo - midsole in dual-density PU

MADE: in Europe

OPTION: Wide Fit

RESOLING: The model can get resoled

SUSTAINABILITY: Contains leather from a tannery rated by the Leather Working Group (LWG)

MOUNTAIN TREKKING



THE ROCKER TECHNOLOGY

The rocker system works during the three actions of the feet (landing - walking - taking off) and it prevents any fold or pressure in the front part of the boot.

The rear rocker improves the landing action while walking while the front rocker improves the take off action during the walking process.



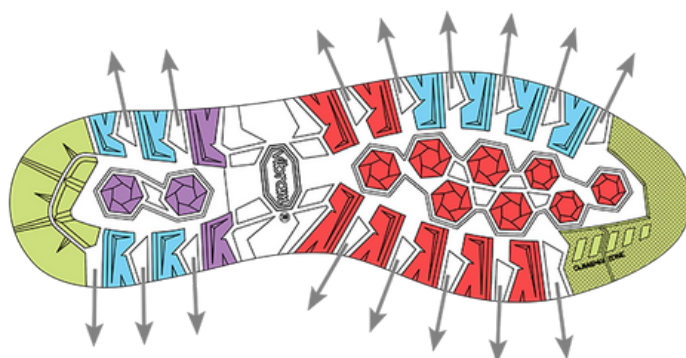
TPU top film: protect the heel material

Pu heel: gives the best cushioning

Double color mono density midsole: it's improved into the PU heel and improves the forefoot comfort



Outsole: Asolo/Vibram Master rubber outsole: the Vibram Mont Compound guarantees the best performance, grip and durability



- Grip
- Breaking
- Traction
- Stability
- Self-cleaning

NUPTSE GV

Best use: Backpacking, trekking on technical terrain and long distance hiking.

MAN A12036 00 A502
brown



782
1/2 PAIR
8 UK



FIT
MM



SIZE
MAN
7-13 UK

UPPER: Water-resistant Nubuck mm 2,2-2,4
LINING: Gore-Tex Performance Comfort Footwear + leather
LASTING BOARD: Asoflex 00 MR
ANATOMIC FOOTBED: Lite 2
SOLE: Asolo/Vibram Master + mono density midsole + dual color PU heel
MADE: in Europe

RESOLING: The model can get resoled
SUSTAINABILITY: Contains leather from a tannery rated by the Leather Working Group (LWG)

POWER MATIC 200 GV EVO

Best use: Backpacking, trekking on technical terrains, long distance hiking.

WOMAN A12041 00 A889
graphite-blue peacock



MAN A12040 00 A516
graphite



698
1/2 PAIR
8 UK



FIT
MM-ML



SIZE
MAN
7-13 UK

SIZE
WOMAN
4,5-8 UK

UPPER: Water-resistant full grain leather 2,6-2,8 mm

LINING: Gore-Tex Performance Comfort Footwear

LASTING BOARD: Asoflex 00 MR

ANATOMIC FOOTBED: Lite 2

SOLE: Asolo/Vibram Master + mono density midsole + dual color PU heel

MADE: in Europe

RESOLING: The model can get resoled

SUSTAINABILITY: Contains leather from a tannery rated by the Leather Working Group (LWG)

SUPERIOR GV

Best use: Backpacking, trekking on technical terraing and long distance hiking.

WOMAN A12035 00 A905
blu navy-peacock blue



MAN A12034 00 A904
dark brown-red



649
1/2 PAIR
8 UK



FIT
MM-ML



SIZE
MAN
7-13 UK

SIZE
WOMAN
4,5-8 UK

UPPER: Water-resistant nubuck mm 2,2-2,4 + Schoeller Soft Shell
LINING: Gore-Tex Performance Comfort Footwear and leather on the collar
LASTING BOARD: Asoflex 00 MR
ANATOMIC FOOTBED: Lite 2
SOLE: Asolo/Vibram Master + mono density midsole + dual color PU heel
MADE: in Europe

RESOLING: The model can get resoled
SUSTAINABILITY: Contains leather from a tannery rated by the Leather Working Group (LWG)

TRAVERSE GV

Best use: Backpacking, trekking on technical terrain and long distance hiking.

WOMAN A12033 00 A903
indian tail-claw



MAN A12032 00 A619
graphite-red



644
1/2 PAIR
8 UK



FIT
MM-ML



SIZE
MAN
7-13 UK

SIZE
WOMAN
4,5-8 UK

UPPER: Water-resistant suede mm 1,6-1,8 + Schoeller Soft Shell
LINING: Gore-Tex Performance Comfort Footwear + leather on the collar
LASTING BOARD: Asoflex 00 MR
ANATOMIC FOOTBED: Lite 2
SOLE: Asolo/Vibram Master + mono density midsole + dual color PU heel
MADE: in Europe

RESOLING: The model can get resoled

SUSTAINABILITY: Contains leather from a tannery rated by the Leather Working Group (LWG)

CORAX GV

Best use: Backpacking, trekking on technical terrain and long distance hiking.

MAN A12038 00 A392
black-red



MAN A12038 00 A561
black-green lime



WOMAN A12039 00 A906
black-peacock blue



613
1/2 PAIR
8 UK



FIT
MM-ML



SIZE
MAN
7-13 UK

SIZE
WOMAN
4,5-8 UK

UPPER: Water-resistant Schoeller K-Tech and suede mm 1,6-1,8

LINING: Gore-Tex Performance Comfort Footwear

LASTING BOARD: Asoflex 00 MR

ANATOMIC FOOTBED: Lite 2

SOLE: Asolo/Vibram Master + mono density midsole + dual color PU heel

MADE: in Europe

RESOLING: The model can get resoled

SUSTAINABILITY: Contains leather from a tannery rated by the Leather Working Group (LWG)



HIKING

ENERGY

FUGITIVE GTX
STYNGER GTX

RADIANT

GREENWOOD EVO GV
CERIUM GV
DRIFTER I EVO GV
FINDER GV

A-FAST

FALCON EVO NBK
FALCON EVO NBK GV
FALCON EVO LTH GV
FALCON EVO GV
FALCON EVO JAQUARD GV

TAHOE MID GTX
TAHOE LTH GTX
TAHOE GTX
SOFTROCK

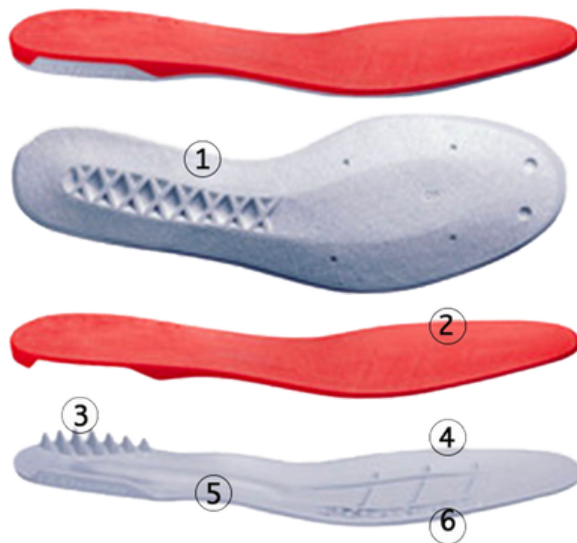
NUCLEON GV MID
NUCLEON GV
PIPE GV

SPACE GV

JUNIOR

TAHOE MID JR GTX

ENERGY



Lasting Board: Duo Asoflex

Two elements are melted together to improve the comfort and the performance. The first element, structured of a stiff material guarantees the anti-pronation, anti-supination and anti-torsion action. The second element, engineered with a softer material offers shock absorption while walking. Different materials for men and women are used.

1. Anti-torsion ribs
2. Absorber layer
3. Anti-pronation support
4. Reinforcements nars
5. Anti-supination support
6. Anti-torsion shank

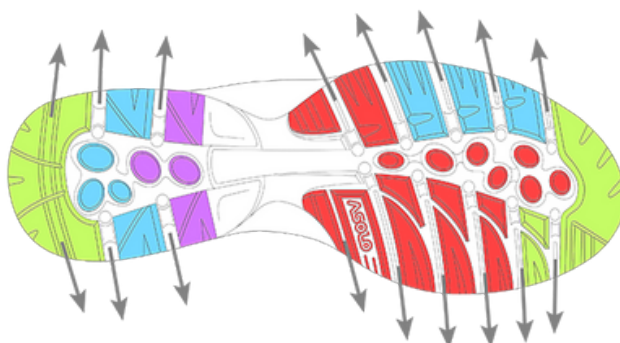


Pu midsole

2. Bi-density rubber bottom
3. Aso-brake heel design



Outsole: Asolo Energy rubber outsole guarantees the best performance, grip, durability and self-cleaning action



- Grip
- Breaking
- Traction
- Stability
- Self-cleaning

FUGITIVE GTX

Best use: Light hikers and trekkers who demand lightweight and comfort with a snappy design.

MAN 0M3400 508
WIDE FIT MAN 0M3440 508
wool-black



MAN 0M3400 914
truffle-stone



693
1/2 PAIR
8 UK



FIT
MM



SIZE
MAN
6,5-13,5 UK

UPPER: Water-resistant suede 1,6-1,8 mm and high tenacity nylon
LINING: Gore-Tex Performance Comfort Footwear
LASTING BOARD: Duo Asoflex man
ANATOMIC FOOTBED: Lite 2
SOLE: Asolo Syncro (rubber-Pu)
MADE: in Europe
OPTION: Wide Fit

RESOLING: The model can get resoled
SUSTAINABILITY: Contains leather from a tannery rated by the Leather Working Group (LWG)

STYNGER GTX

Best use: Light hikers and trekkers who demand lightweight and comfort with a snappy design.

WOMAN 0M3453 065
cloudy grey-stone



WOMAN 0M3453 639
grey-gunmetal



558
1/2 PAIR
5 UK



FIT
ML



SIZE
WOMAN
4-8 UK

UPPER: Water-resistant suede 1,6-1,8 mm and high tenacity nylon

LINING: Gore-Tex Performance Comfort Footwear

LASTING BOARD: Duo Asoflex man

ANATOMIC FOOTBED: Lite 2

SOLE: Asolo Syncro (rubber-Pu)

MADE: in Europe

RESOLING: The model can get resoled

SUSTAINABILITY: Contains leather from a tannery rated by the Leather Working Group (LWG)





PERFORMANCE HIKING



DEFINITION OF HIKING SHOES BY WIKIPEDIA:

Hiking walking boots are footwear specifically designed for protecting the feet and ankles during outdoor walking activities such as hiking.

They are one of the most important items of hiking gear, since their quality and durability can determinate a hiker's ability to walk long distances without injury.

Hiking boots are constructed to provide comfort for walking considerable distance over rough terrain. Boots that protect the hiker's feet and heel are recommended. Hiking boots give ankle support and are fairly stiff. A less popular alternative is to use light trainers with thin soles. Footwear should be neither too loose nor too tight, to help prevent blisters and sore feet.

Most hiking boots are also designed for other outdoor activities such as backpacking, climbing, mountaineering and hunting.

DEFINITION OF PERFORMANCE HIKING SHOES BY ASOLO:

Performance hiking boots are footwear specifically designed and engineer for protecting the feet and ankles during outdoor hiking activities.

Three main attributes define this category of footwear:

Light weight: light weight materials make it one of the lightest boots available while maintaining the correct flexibility and comfort on every trail.

Aggressive Grip: aggressive lugs help the Asolo/Vibram MegaGrip sole claw into any surface, for giving confidence on every hike.

Weather Protection: mountains almost always give unexpected weather. Our performance hiking line is fully lined with the Gore-Tex membrane which ensures comfort in the harshest conditions.

PERFORMANCE HIKING - Consumer Profile



BEST USE: Light and agile boot designed for technical approaches and day hikes.

CONSUMER PROFILE

Gender:
Women & Man

Age:
18-65

Outdoor consumers are defined as people who:

- Spend at least one hour per week outdoors
- Purchase apparel, footwear, equipment, and/or technology for outdoor activities

Demographically, outdoor consumers represent a broader market of people outside and being active than historically targeted by the outdoor industry. About half are female, almost half are 25-44 years old.

CONSUMER TARGET:

Outdoor consumers are looking for ways to stay active in their everyday lives.

CONSUMER PROFILE EXPECTATIONS:

1. Comfort
2. Stability
3. Traction
4. Weight
5. water resistance
6. Durability
7. Value

PERFORMANCE HIKING - Asolo Solutions:

COMFORT

COMFORT:

The Asolo comfort is determined by the development of a dedicated last, the use of high technical materials and through the development of a specific outsole package that guarantees support and comfort for the required needs.

STABILITY

STABILITY:

The biggest reason to wear an Asolo Performance Hiking shoes rather than using a trail running is for the increased stability. The high-cut models provide more resistance and support to rolling ankles. Looking at stability, our R&D Team considers torsional stability in the sole, width of the sole and stiffness below the footbed.

TRACTION

SUPPORT & TRACTION:

The amount of traction your shoes provide you is one of the most important aspects of a boot's performance. Soles can have softer or denser rubber compounds, which will conform better to different terrain types. Through the study of a new outsole package Asolo gives the correct support, grip and performances in its line of products. More, we also look at the patterning of the lugs: while a boot with many deep lugs on a narrow mountain boot will excel in loose rubber (our dirt bike), the broad, shallower lugs found on a wide boot will provide more surface area to contact firm trail surfaces.

LIGHTNESS

LIGHTWEIGHT:

Weight is an important factor. The heavier the shoes is, the less efficient you will be throughout a long day hiking. In general, lighter is better, but only up to a point. You have chosen a shoes for its improved stability, support and traction. For this, in our line we achieved a unique weight without compromising the performances.

GORE-TEX

WATER-RESISTANCE:

All our models feature waterproof and breathable Gore-Tex membrane in order to protect your feet and breathe easily.

DURABILITY

DURABILITY:

No boot will last forever, especially with heavy use, but in all our boots we are using the highest quality fabric material, synthetic fibers and rubber compound.

CONCLUSION:

Hiking boots are crucial piece of gear to consider for your hiking adventures. So take your time, then treat yourself to a pair of supportive, weight-appropriate, and comfortable shoes for your next adventure.

PERFORMANCE HIKING - Technologies:



FIT:

From the beginning Asolo's philosophy has been to develop innovative and technologically advanced footwear with great looks following the correct morphology of the feet. Asolo pays particular attention to the natural flex of the foot while also making sure that performance and comfort of its footwear is maximized. In the whole Asolo collection, the lasts are broadly defined by men's, women's and child's fit, but also include narrow, normal and wide fit option in key styles. Following our fit philosophy, Asolo engineered and developed two completely new last. The new Asolo lasts have been studied for the Performance Approach Line and includes a completely dedicated last for Man following the morphology, volumes and anatomical shape of his foot and a completely dedicated last for Woman following the morphology, volumes and anatomical shape of woman's foot.



WATERPROOFNESS & BREATHABILITY:

In 1959, Bill and Genevieve Gore launch W. L. Gore & Associates in the basement of their home in Newark, Delaware. Today is recognized as the finest waterproof and breathable material in the world. To ensure the highest quality and safety, Gore-Tex work with independent, credible third-party standards "bluesign®". Asolo's shoes are certified by Gore-Tex and every pair made are 100% product tested. Gore-Tex new laminated is engineered with recycled material which assures waterproofness and breathability. Water stays on the outside while perspiration can easily escape from the inside.



SCHOELLER K-TECH:

The roots of today's Schoeller Textil AG are anchored in an environment of new beginnings. The 1860s saw the emergence of such organizations as the Swiss Red Cross and such architectural achievements as the Gotthard Tunnel. This pioneering age also saw the establishment of our company: In 1868, Rudolph Schoeller moved from Breslau to Zürich and set up Switzerland's first worsted yarn spinning mill in Schaffhausen with the name "Schoeller & Söhne," the origin of today's Schoeller Textil AG.



TRACTION:

In 1935, tragedy drives Vitale Bramani to develop an outsole capable of excellent traction on mixed surfaces. Using vulcanized rubber technology, he developed the Carrarmato design. The design was soon famous. Even today, it remains one of the most used soles by mountain climbers. Asolo's footwear are made using outsole designed by Asolo and made by Vibram. Vibram Mega Grip is cutting-edge technology that represents the most advanced traction system for wet and dry surfaces that Vibram has ever created. Mega Grip technology is made entirely of rubber material without the addition of metal components or inserts. Unmatched technology on wet surfaces and exceptional durability are the main advantages of the compound.

PERFORMANCE HIKING - Fit Technology

From the beginning Asolo's philosophy has been to develop innovative and technologically advanced footwear with great looks following the correct morphology of the feet. Asolo pays particular attention to the natural flex of the foot while also making sure that performance and comfort of its footwear is maximized. In the whole Asolo collection, the lasts are broadly defined by men's, women's and child's fit, but also include narrow, normal and wide fit option in key styles.

ASOLO WOMAN BUNION LAST:

Following our fit philosophy, Asolo engineered and developed a completely dedicated woman last with a particular focus on allux valgus. The word bunion comes from the Latin "bunio," meaning enlargement, and the medical term for the condition is "hallux valgus." About 10-25% of people have bunions, which can make your feet so sore that you can barely walk.

High heels can exacerbate the problem because they tip the body's weight forward, forcing the toes into the front of the shoe. This may help to explain why bunions are 10 times more common in women than in men.

Bunions can lead to difficulties finding properly fitting footwear and may force a person to buy a larger size shoe to accommodate the width of the bunion. If the bunion deformity becomes severe enough, the foot can hurt in different places even without the constriction of shoes. It is then considered as being a mechanical function problem of the forefoot.

For this new dedicated woman project we started with an analysis with our Community.

Here below are the questions we asked to our Community and here their answers:

Do you have a bunion issue?

Yes 24,56%

No 75,44%

Do you know someone with the bunion issue?

Yes 63,22%

No 36,78%

Would you like to get a proper hiking model for the bunion issue?

Yes 78,41%

No 21,59%



Drawing of a bunion

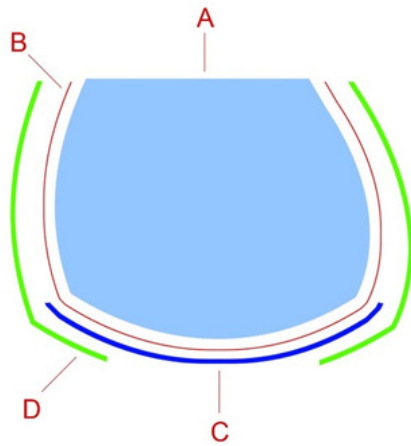


Asolo bunion last - bottom view



Asolo bunion last - front view

PERFORMANCE HIKING - Construction Technologies:



LASTED CONSTRUCTION:

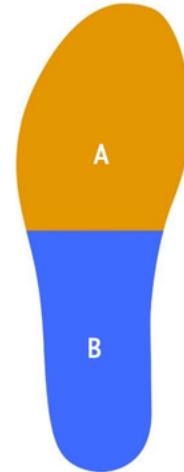
This sophisticated and time-consuming technique involves the shoemaker pulling the upper over the last and downwards over the insole and affixing this to create a unit. The midsole and outsole are then applied.

The following models are engineered with the lasted construction.

BENEFITS:

> The key advantage is that deliver torsional rigidity and support without encumbering underfoot cushion.

A : Last
B : Gore-Tex lining
C : Lasting board Asoflex
D : Upper



LASTING BOARD:

The lasting board has been engineered following exactly the last shape and it is made by polypropylene material.

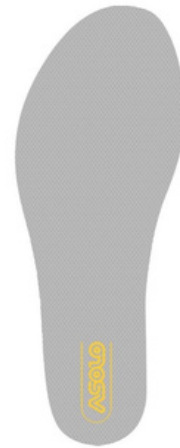
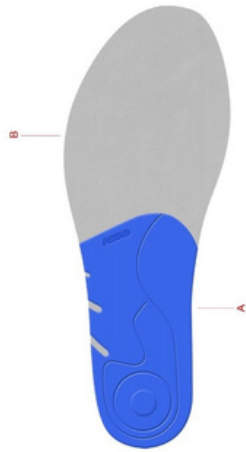
It has been developed with different thickness from rear to the front area and the rear part is reinforced with a non-woven textile.

A : Polypropylene
B : Non-woven textile

BENEFITS:

> Lightweight
> Controlled flexibility
> Foot protection

PERFORMANCE HIKING - Footbed Technologies:



ASOLO FOOTBED:

The footbeds are the result of an important study and they have been engineered completely by Asolo.

The footbeds follow the exact design of the last and the lasting board.

They are made with four different materials (top velveteen, Eva, non-woven textile, Pe heel support) and using different thickness from rear to the front part for giving extreme comfort for all day wear.

A: Thermo mould PE heel support

B: Non-woven textile

BENEFITS:

The Asolo footbed provides an extreme cushioning and anatomically designed support.

The internal foam created a cooler, drier, healthier, better cushioned environment under the foot.

The technologies and proprieties of the footbeds will not break down or lose effectiveness over time.

The Eva heel cups allow for a better heel support and add cushioning.

PERFORMANCE HIKING



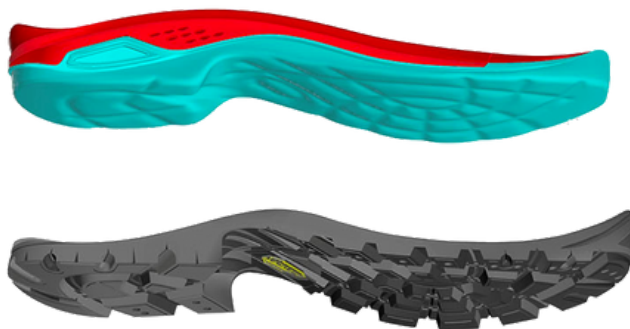
Duo Radiant Eva midsole:

The midsole is named Duo Radiant as it is constructed and developed with duo different Eva densities. The top (first part) is more compact in order to improve the stability while the lower part (second part) is softer and it stretches from the heel to the toe for offering the maximum comfort during the activity.



The outsole project:

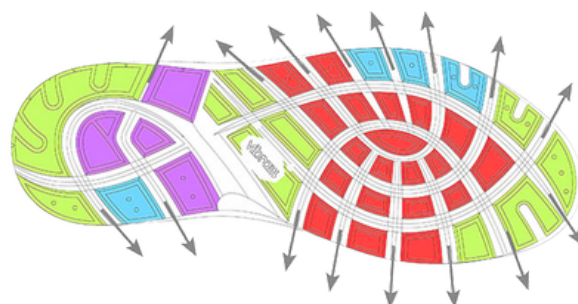
The project is born from the collaboration between Asolo and Vibram and the outsole design has been studied for offering outstanding performances and grip. The aggressive heel cleats combined with Aso-brake enhance the grip on descents while the bold design on the inside lateral part offers increased support and control on the pronation.



Midsole: Dual density moulded Eva midsole. The first layer it's harder and guarantees stability and support while the second layer is softer and guarantees an amazing comfort and cushioning



Outsole: Asolo/Vibram Duo Radiant with MegaGrip compound = amazing grip in every kind of terrain, great traction, sculpted heel for the best braking and self-cleaning action design



- Grip
- Breaking
- Traction
- Stability
- Self-cleaning

GREENWOOD EVO GV

Best use: Light hikers and trekkers who demand lightweight and comfort with a snappy design.

WOMAN A23129 00 A918
WOMAN BUNION A23133 AV A918
petroleum



WOMAN A23129 00 A051
grapeade



MAN A23128 00 A516
graphite



MAN A23128 00 A034
major brown



653
1/2 PAIR
8 UK



FIT
MM-ML



SIZE
MAN
6,5-13,5 UK

SIZE
WOMAN
3,5-9 UK

UPPER: Water-resistant Perwanger leather mm 2,2-2,4
LINING: Gore-Tex Performance Comfort Footwear
LASTING BOARD: Asoflex 00 MR
ANATOMIC FOOTBED: Lite 2
SOLE: Asolo/Vibram Duo Radiant with Megagrip (rubber-dual density Eva)
MADE: in Europe

RESOLING: The model can get resoled
SUSTAINABILITY: The leather meet the standard by Oeko Tex

CERIUM GV

Best use: Light hikers and trekkers who demand lightweight and comfort with a snappy design.

WOMAN A23125 00 A908
graphite-north sea



MAN A23124 00 A189
graphite-graphite



574
1/2 PAIR
8 UK



FIT
MM-ML



SIZE
MAN
6,5-13,5 UK

SIZE
WOMAN
3,5-9 UK

UPPER: Water-resistant suede mm 1,6-1,8

LINING: Gore-Tex Performance Comfort Footwear

LASTING BOARD: Asoflex 00 SR Fast

ANATOMIC FOOTBED: Lite 2

SOLE: Asolo/Vibram Duo Radiant with Megagrip (rubber-dual density Eva)

MADE: in Europe

RESOLING: The model can get resoled

SUSTAINABILITY: Contains leather from a tannery rated by the Leather Working Group (LWG)

DRIFTER I GV EVO



Best use: Light hikers and trekkers who demand lightweight and comfort with a snappy design.

WOMAN A23131 00 B166
gerbera-stone



WOMAN A23131 00 B037
grey-blu fog



MAN A23130 00 A623
WIDE FIT MAN A23130 MW A623
graphite-gunmetal



MAN A23130 00 A550
dark brown-brown



593
1/2 PAIR
8 UK



FIT
MM-ML



SIZE
MAN
6,5-13,5 UK

SIZE
WOMAN
3,5-9 UK

UPPER: Water-resistant suede mm 1,6-1,8 + Cordura

LINING: Gore-Tex Performance Comfort Footwear

LASTING BOARD: Asoflex 00 MR

ANATOMIC FOOTBED: Lite 2

SOLE: Asolo/Vibram Duo Radiant with Megagrip (rubber-dual density Eva)

MADE: in Europe

RESOLING: The model can get resoled

SUSTAINABILITY: Contains leather from a tannery rated by the Leather Working Group (LWG)

Best use: Light hikers and trekkers who demand lightweight and comfort with a snappy design.

MAN A23102 00 B167
graphite-gunmetal-cortex



MAN A23102 00 A627
graphite-green lime



MAN A23102 00 A661
graphite-gunmetal-flame



545
1/2 PAIR
8 UK



FIT
MM-ML



SIZE
MAN
6,5-13,5 UK

SIZE
WOMAN
3,5-9 UK

UPPER: Water-resistant suede mm 1,6-1,8

LINING: Gore-Tex Performance Comfort Footwear

LASTING BOARD: Asoflex 00 SR Fast

ANATOMIC FOOTBED: Lite 2

SOLE: Asolo/Vibram Duo Radiant with Megagrip (rubber-mono density Eva)

MADE: in Europe

RESOLING: The model can get resoled

SUSTAINABILITY: Contains leather from a tannery rated by the Leather Working Group (LWG)

Best use: Light hikers and trekkers who demand lightweight and comfort with a snappy design.

WOMAN A23103 00 B168
grey-stone-shamrock green



WOMAN A23103 00 A177
grey-gunmetal-pool side



WOMAN A23103 00 B106
grey-rose taupe



447
1/2 PAIR
5 UK



FIT
MM-ML



SIZE
MAN
6,5-13,5 UK

SIZE
WOMAN
3,5-9 UK

UPPER: Water-resistant suede mm 1,6-1,8

LINING: Gore-Tex Performance Comfort Footwear

LASTING BOARD: Asoflex 00 SR Fast

ANATOMIC FOOTBED: Lite 2

SOLE: Asolo/Vibram Duo Radiant with Megagrip (rubber-dual density Eva)

MADE: in Europe

RESOLING: The model can get resoled

SUSTAINABILITY: Contains leather from a tannery rated by the Leather Working Group (LWG)



A-FAST - Consumer Profile



BEST USE: Day hikes and light weight overnight trips.

Lightweight, protective footwear for people who like to move fast in the mountains and encounter a variety of terrain.

CONSUMER PROFILE

Gender:

Women & Man

Age:

25-44

Occupation:

Student, young professional, middle management

Social level:

Medium high

Hobbies & Leisure:

Outdoor, hiking & Camping. They are outdoor enthusiast's people.

Preferred channel:

Web-mail

Other:

Active users of Social Networks

KEY FACTORS THEY ARE LOOKING FOR THEIR FOOTWEAR:

1. Innovation is more important than ever
2. Style
3. Comfort
4. Protection
5. Stability
6. Grip
7. Quality
8. Durability
9. Sustainability
10. Made in

CONSUMER PROFILE EXPECTATIONS:

They want products that are versatile and authentic. Products that are good enough for their needs and have multiple applications. Looking for products that reflect their values

A-FAST - Technologies:



FIT:

From the beginning Asolo's philosophy has been to develop innovative and technologically advanced footwear with great looks following the correct morphology of the feet. Asolo pays particular attention to the natural flex of the foot while also making sure that performance and comfort of its footwear is maximized. In the whole Asolo collection, the lasts are broadly defined by men's, women's and child's fit, but also include narrow, normal and wide fit option in key styles. Following our fit philosophy, Asolo engineered and developed two completely new last. The new Asolo lasts have been studied for the Performance Approach Line and includes a completely dedicated last for Man following the morphology, volumes and anatomical shape of his foot and a completely dedicated last for Woman following the morphology, volumes and anatomical shape of woman's foot.



WATERPROOFNESS & BREATHABILITY:

In 1959, Bill and Genevieve Gore launch W. L. Gore & Associates in the basement of their home in Newark, Delaware. Today is recognized as the finest waterproof and breathable material in the world. To ensure the highest quality and safety, Gore-Tex work with independent, credible third-party standards "bluesign®". Asolo's shoes are certified by Gore-Tex and every pair made are 100% product tested. Gore-Tex new laminated is engineered with recycled material which assures waterproofness and breathability. Water stays on the outside while perspiration can easily escape from the inside.

TRACTION:



In 1935, tragedy drives Vitale Bramani to develop an outsole capable of excellent traction on mixed surfaces. Using vulcanized rubber technology, he developed the Carrarmato design. The design was soon famous. Even today, it remains one of the most used soles by mountain climbers. Asolo's footwear are made using outsole designed by Asolo and made by Vibram. Vibram Mega Grip is cutting-edge technology that represents the most advanced traction system for wet and dry surfaces that Vibram has ever created. Mega Grip technology is made entirely of rubber material without the addition of metal components or inserts. Unmatched technology on wet surfaces and exceptional durability are the main advantages of the compound.

A-FAST - Fit Technology

From the beginning Asolo's philosophy has been to develop innovative and technologically advanced footwear with great looks following the correct morphology of the feet. Asolo pays particular attention to the natural flex of the foot while also making sure that performance and comfort of its footwear is maximized. In the whole Asolo collection, the lasts are broadly defined by men's, women's and child's fit, but also include narrow, normal and wide fit option in key styles.

ASOLO ASOFLEX 00 SR LAST:

Following our fit philosophy, Asolo engineered and developed two completely new last.

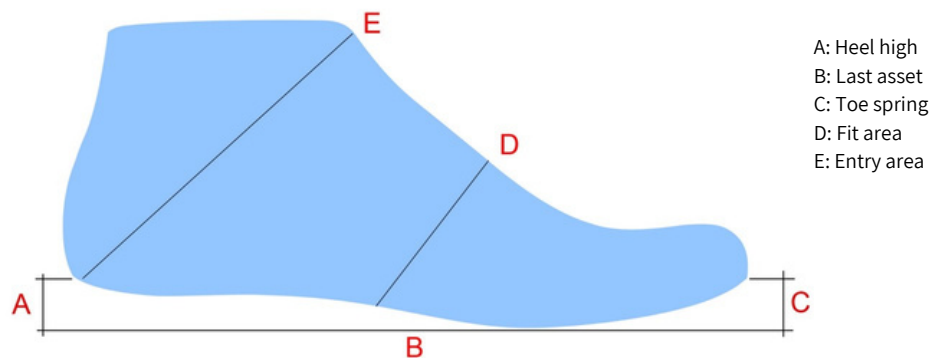
The new Asolo lasts have been studied for the **A-Fast Line** and includes a completely dedicated last for Man following the morphology, volumes and anatomical shape of his foot and a completely dedicated last for Woman following the morphology, volumes and anatomical shape of woman's foot.

The new Asolo last reflect all the characteristics of the line assuring great comfort, the correct posture and distributed volumes.

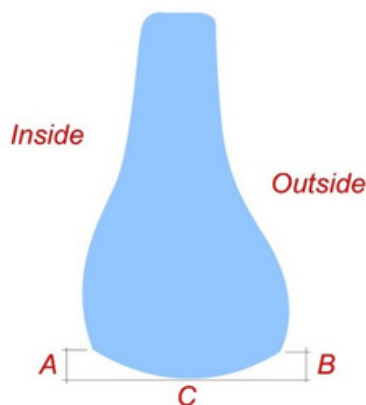
There isn't extra space into the boots (precise control with the ground)

The shaped arch prevents the foot sliding during the descends

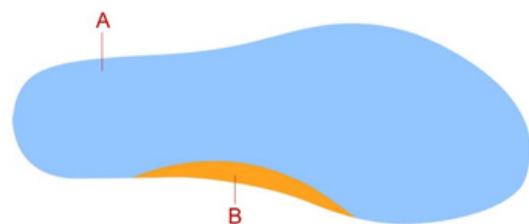
The rear area is naturally shaped contain correctly the heel.



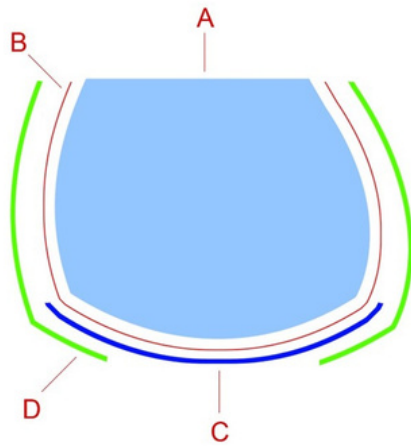
A: Inside gap
B: Outside gap
C: Round heel shape



A: Last bottom gauge
B: Shaped arch area



A-FAST - Construction Technologies:



LASTED CONSTRUCTION:

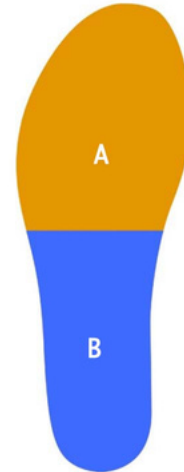
This sophisticated and time-consuming technique involves the shoemaker pulling the upper over the last and downwards over the insole and affixing this to create a unit. The midsole and outsole are then applied.

The following A-Fast models are engineered with the lasted construction.

BENEFITS:

> The key advantage is that deliver torsional rigidity and support without encumbering underfoot cushion.

A : Last
B : Gore-Tex lining
C : Lasting board Asoflex
D : Upper



A-FAST LASTING BOARD:

The A-Fast lasting board has been engineered following exactly the last shape and it is made by polypropylene material.

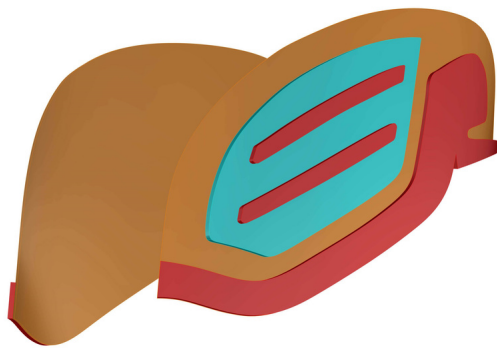
It has been developed with different thickness from rear to the front area and the rear part is reinforced with a non-woven textile.

A : Polypropylene
B : Non-woven textile

BENEFITS:

> Lightweight
> Controlled flexibility
> Foot protection

A-FAST - Collar & Upper Technologies:



ASOLO FALCON 3D COLLAR:

The collar is made with a 3D thermo-shaped technology following the precise ankle fit morphology of man and woman.

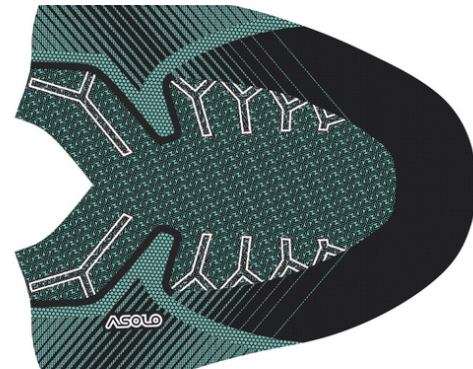
It is made of the following three materials:

Outside layer: Lycra
Middle layer: Pu foam
Inside layer: bi-elastic material

The three materials together gives the following benefits:

- perfect adaptability to the ankle area thanks to the 3D construction and the reduced thickness of the materials
- immediate and supreme comfort through the use of three soft materials
- reduced weight thanks to the new 3D construction

This technology is used for all the models of the new Falcon Evo line - in the Mid-cut models the technology is the same, but the height of the collar and the design is different in order to follow the mid-cut characteristics of the models.



ASOLO JACQUARD TECHNOLOGY:

Asolo developed a Falcon made in Jacquard woven textile. The technology used individuates two main areas made of different materials which are:

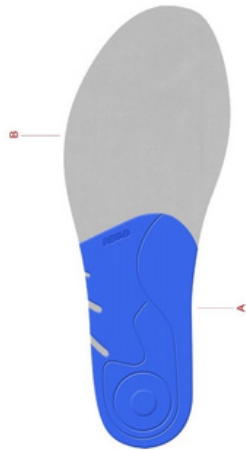
- The green and white areas are made by a yarn that it is a mix of nylon and polyester.
- The front and rear part area (black color) are made by a nylon yarn + Pu.

More, the upper can be divided into two main parts which are: the all-around area which has an anti-abrasion function and the top-middle area which has a breathability characteristics.

This technology has the following benefits:

- supreme comfort and adaptability to the feet
- extreme lightness
- high abrasion resistance
- waterproofness
- breathability

A-FAST - Footbed Technologies:



ASOLO FOOTBED:

The A-Fast footbeds are the result of an important study and they have been engineered completely by Asolo.

The footbeds follow the exact design of the last and the lasting board.

They are made with four different materials (top velveteen, Eva, non-woven textile, Pe heel support) and using different thickness from rear to the front part for giving extreme comfort for all day wear.

A: Thermo mould PE heel support

B: Non-woven textile

BENEFITS:

The Asolo footbed provides an extreme cushioning and anatomically designed support.

The internal foam created a cooler, drier, healthier, better cushioned environment under the foot.

The technologies and proprieties of the footbeds will not break down or lose effectiveness over time.

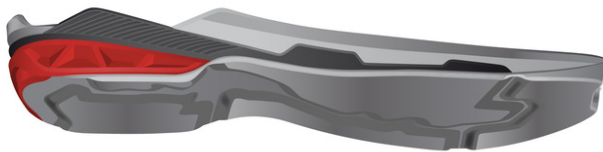
The Eva heel cups allow for a better heel support and add cushioning.

A-FAST REDSTER

This project is born from the collaboration between Asolo and Vibram. The sole is made of a double density molded eva midsole. The high density Eva midsole guarantees stability while the low density Eva midsole offers the maximum comfort and shock absorption. The rubber outsole has a low profile and combined with his new design increases the grip and the self-cleaning action. It is developed with Vibram Megagrip compound which gives the maximum grip on wet terrain and it is resistant from abrasion.



Tpu toe cap protection: additional front protection

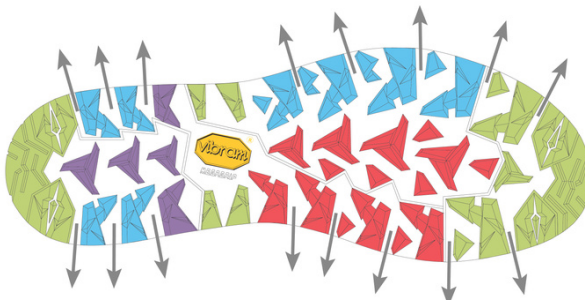


High density Eva midsole: guarantees the best support and stability

Low density Eva midsole: guarantees an amazing comfort and cushioning



Outsole: Asolo/Vibram Omega rubber outsole with MegaGrip compound guarantees the best performance, grip, durability and self-cleaning action



- Grip
- Breaking
- Traction
- Stability
- Self-cleaning

FALCON EVO NBK GV

Best use: The boot has the ideal combination of durability and long-lasting comfort that make it ideal for hiking the trails and walking.

MAN A40064 00 B116
dark brown-lime



MAN A40064 00 A449
graphite-grey



WOMAN A40065 00 B117
dark brown-rose tape



WOMAN A40065 00 B118
graphite-aqua green



497
1/2 PAIR
8 UK



FIT
MM-ML



SIZE
MAN
7-12,5 UK

SIZE
WOMAN
4-9 UK

UPPER: Water-resistant nubuck 1,3-1,5 mm
LINING: Gore-Tex Extended Comfort Footwear + leather collar
LASTING BOARD: Asoflex 00 SR
ANATOMIC FOOTBED: Lite 2 plus
SOLE: Asolo/Vibram Omega with MegaGrip compound (rubber-dual density Eva)
MADE: in Europe

RESOLING: The model can get resoled
SUSTAINABILITY: Contains leather from a tannery rated by the Leather Working Group (LWG)

FALCON EVO NBK

NEW

Best use: The boot has the ideal combination of durability and long-lasting comfort that make it ideal for hiking the trails and walking.

MAN A40072 00 B116
dark brown-lime



WOMAN A40073 00 B118
graphite-aqua green



497
1/2 PAIR
8 UK



FIT
MM-ML



SIZE
MAN
7-12,5 UK

SIZE
WOMAN
4-9 UK

UPPER: Water-resistant nubuck 1,3-1,5 mm

LINING: Leather lining

LASTING BOARD: Asoflex 00 SR

ANATOMIC FOOTBED: Lite 2 plus

SOLE: Asolo/Vibram Omega with MegaGrip compound (rubber-dual density Eva)

MADE: in Europe

RESOLING: The model can get resoled

SUSTAINABILITY: Contains leather from a tannery rated by the Leather Working Group (LWG)

FALCON EVO LTH GV

Best use: The boot has the ideal combination of durability and long-lasting comfort that make it ideal for hiking the trails and walking.

WOMAN A40061 00 B121
hydro- tail



WOMAN A40061 00 A872
grey-shark



MAN A40060 00 A553
dark brown-dark brown



MAN A40060 00 B036
grey-light black



422
1/2 PAIR
5 UK



FIT
MM-ML



SIZE
MAN
7-12,5 UK

SIZE
WOMAN
4-9 UK

UPPER: Water-resistant suede 1,6-1,8 mm

LINING: Gore-Tex Extended Comfort Footwear

LASTING BOARD: Asoflex 00 SR

ANATOMIC FOOTBED: Lite 2 plus

SOLE: Asolo/Vibram Omega with MegaGrip compound (rubber-dual density Eva)

MADE: in Europe

RESOLING: The model can get resoled

SUSTAINABILITY: Contains leather from a tannery rated by the Leather Working Group (LWG)

FALCON EVO GV



Best use: The boot has the ideal combination of durability and long-lasting comfort that make it ideal for hiking the trails and walking.

MAN A40062 00 B169
cortex-graphite



MAN A40062 00 B039
light black-graphite



MAN A40062 00 A640
grey-black



500
1/2 PAIR
8 UK



FIT
MM-ML



SIZE
MAN
7-12,5 UK

SIZE
WOMAN
4-9 UK

UPPER: Water-resistant suede 1,6-1,8 mm + high tenacity nylon
LINING: Gore-Tex Extended Comfort Footwear
LASTING BOARD: Asoflex 00 SR fast
ANATOMIC FOOTBED: Lite 2 plus
SOLE: Asolo/Vibram Omega with MegaGrip compound (rubber-dual density Eva)
MADE: in Europe

RESOLING: The model can get resoled
SUSTAINABILITY: Contains leather from a tannery rated by the Leather Working Group (LWG)

FALCON EVO GV



Best use: The boot has the ideal combination of durability and long-lasting comfort that make it ideal for hiking the trails and walking.

WOMAN A40063 00 B170
grey carminio-red-shark



WOMAN A40063 00 B112
dry weeds-aqua green



WOMAN A40063 00 B111
hydro-black



428
1/2 PAIR
5 UK



FIT
MM-ML



SIZE
MAN
7-12,5 UK

SIZE
WOMAN
4-9 UK

UPPER: Water-resistant suede 1,6-1,8 mm + high tenacity nylon

LINING: Gore-Tex Extended Comfort Footwear

LASTING BOARD: Asoflex 00 SR fast

ANATOMIC FOOTBED: Lite 2 plus

SOLE: Asolo/Vibram Omega with MegaGrip compound (rubber-dual density Eva)

MADE: in Europe

RESOLING: The model can get resoled

SUSTAINABILITY: Contains leather from a tannery rated by the Leather Working Group (LWG)

FALCON EVO JACQUARD GV



Best use: The boot has the ideal combination of durability and long-lasting comfort that make it ideal for hiking the trails and summer walking.

MAN A40066 00 B176
black-coyote



MAN A40066 00 A392
black-red



WOMAN A40067 00 A559
black-aqua green



WOMAN A40067 00 B183
black-magenta



433
1/2 PAIR
8 UK



FIT
MM-ML



SIZE
MAN
7-12,5 UK

SIZE
WOMAN
4-9 UK

UPPER: Jacquard woven textile
LINING: Gore-Tex Extended Comfort Footwear
LASTING BOARD: Asoflex 00 SR fast
ANATOMIC FOOTBED: Lite 2 plus
SOLE: Asolo/Vibram Omega with MegaGrip compound (rubber-dual density Eva)
MADE: in Europe

RESOLING: The model can get resoled



FASTPACKING



DEFINITION OF FASTPACKING:

Fastpacking is a cross between Backpacking and Mountain Running.

The defining characteristics of Fastpacking are:

1. Rapid, long-distance mountain travel, on foot, over multiple days, involving camps or bivouacs
2. Refined equipment choices and practiced skill sets that allow for both rapid movement and self-sufficiency in a remote mountain setting.
3. The vast majority of this activity is done strictly for pleasure.

DEFINITION OF PERFORMANCE FASTPACKING SHOES BY ASOLO:

Performance Fastpacking shoes are specifically designed and engineered for maximizing speed and minimizing overall effort, without overly compromising safety or comfort.

Three main attributes define our category of Performance products:

Light weight: this can make a big difference in overall efficiency and enjoyment. Lightweight materials make it one of the lightest shoes available, while maintaining flexibility and comfort on every trail.

Aggressive grip: aggressive lugs help the Asolo/Sigma Grip sole claw into any surface, for confidence on every hike.

Weather protection: mountains almost always give you unexpected weather. Gore-Tex membrane protects and ensures comfort in the harshest weather conditions and breaths easily.

FASTPACKING - Consumer Profile



BEST USE: Low cut hiking shoe for fastpacking and speed hiking, excellent in rugged terrains.

CONSUMER PROFILE

Gender:
Women & Man

Age:
18-60

CONSUMER TARGET:

People who share alpinists "light and fast" attitude for moving in the mountains.

People who will be traveling on trails and uneven terrain will choose to wear lightweight shoes which are designed to be lightweight and provide off-road grip in wet and dried conditions.

CONSUMER PROFILE EXPECTATIONS:

1. Lightweight
2. Grip
3. Comfort
4. Water resistance
5. Stability
6. Durability

FASTPACKING - Asolo Solutions:



LIGHTNESS

LIGHTWEIGHT:

Weight is an important factor. The heavier the shoes is, the less efficient you will be throughout a fastpacking and speed hiking activity. In general, lighter is better, but only up to a point. You have chosen a shoes for its improved stability, support and traction. For this, in our new line we achieved a unique weight without compromising the performances.



SUPPORT

SUPPORT & TRACTION:

The amount of traction your shoes provide you is one of the most important aspects of a shoe's performance. Soles can have softer or denser rubber compounds, which will conform better to different terrain types. Through the study of a new outsole package Asolo gives the correct support, grip and performances in its new line of products.



COMFORT

COMFORT:

The Asolo comfort is determined by the development of a completely new dedicated last, the use of high technical materials and through the development of a new outsole package that guarantees support and comfort for the required needs.



WATERPROOF NESS

WATER-RESISTANCE:

Most of our models feature waterproof and breathable Gore-Tex membrane in order to protect your feet and breathe easily.



STABILITY

STABILITY:

The biggest reason to wear an Asolo Performance Fastpacking shoes rather than using a trail running is for the increased stability. Looking at stability, our R&D Team considers torsional stability in the sole, width of the sole and stiffness below the footbed.



DURABILITY

DURABILITY:

No shoes will last forever, especially with heavy use, but in all our shoes we are using the highest quality fabric material, synthetic fibers and rubber compound.

CONSLUSION:

Fastpacking shoes are crucial piece of gear to consider for your fastpacking and speed hiking adventures. So take your time, then treat yourself to a pair of supportive, weight-appropriate, and comfortable shoes for your next trail outing.

FASTPACKING - Technologies:



FIT:

From the beginning Asolo's philosophy has been to develop innovative and technologically advanced footwear with great looks following the correct morphology of the feet. Asolo pays particular attention to the natural flex of the foot while also making sure that performance and comfort of its footwear is maximized. In the whole Asolo collection, the lasts are broadly defined by men's, women's and child's fit, but also include narrow, normal and wide fit option in key styles. Following our fit philosophy, Asolo engineered and developed two completely new last. The new Asolo lasts have been studied for the Performance Approach Line and includes a completely dedicated last for Man following the morphology, volumes and anatomical shape of his foot and a completely dedicated last for Woman following the morphology, volumes and anatomical shape of woman's foot.



WATERPROOFNESS & BREATHABILITY:

In 1959, Bill and Genevieve Gore launch W. L. Gore & Associates in the basement of their home in Newark, Delaware. Today is recognized as the finest waterproof and breathable material in the world. To ensure the highest quality and safety, Gore-Tex work with independent, credible third-party standards "bluesign®". Asolo's shoes are certified by Gore-Tex and every pair made are 100% product tested. Gore-Tex new laminated is engineered with recycled material which assures waterproofness and breathability. Water stays on the outside while perspiration can easily escape from the inside.



TRACTION:

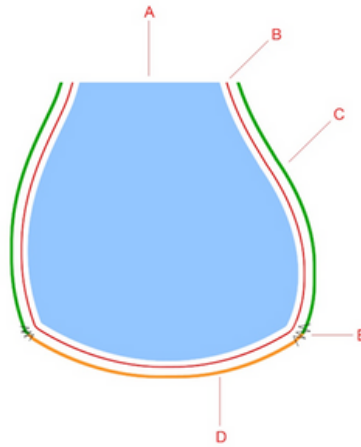
Asolo's footwear are made using outsole designed by Asolo. The Asolo Sigma Grip is an innovative exclusive Asolo compound that represents the most advanced traction system for all rugged terrains. The Sigma Grip technology is made entirely of rubber material without the addition of metal components or inserts. Unmatched technology on wet surfaces and exceptional durability are the main advantages of the compound.

COMFORT



OrthoLite started in 1997 when the founder Glenn Barrett, a lifelong footwear entrepreneur, had identified a need that had long been overlooked in the footwear industry combined with a timely flash of inspiration. Glenn knew the interior environment of the shoe had not been addressed and while on a sourcing trip to Taiwan, he was introduced to an innovative new open-cell PU foam that was the ideal technology to solve the problems occurring inside the shoe. Seeing its remarkable characteristics, he realized it would make the perfect insole solution—outperforming other materials in every measurable way. He got to work and formulated his first batch of prototypes—making a better insole that was more comfortable, but one that also provided a cooler, drier, and healthier interior environment of the shoe that was also easier on the planet by using 5% recycled outsole rubber waste material in the mix. The new anatomical footbeds for the Performance Approach Line are the result of the partnership between Asolo and Ortholite. They differentiate by man and women and they follow the design of the new Performance Approach last and lasting board.

FASTPACKING- Construction Technologies:



SLIP LASTED CONSTRUCTION:

Named after its inventor, the Strobel seam is used to sew the insole to the upper. The sole unit is then applied. This technique is mainly used for running shoes and trainers as these have to be very flexible. Footwear made by Strobel construction is obvious if you take out the insole which reveals the Strobel seam from the insole to the upper.

BENEFITS:

> The key advantages of the slip last construction shoes are the super lightweight and flexibility.

- A : Last
- B : Gore-Tex lining
- C: Upper
- D : Lasting board
- E : Strobel stitching

FASTPACKING- Footbeds Technologies:



MAN FOOTBED



WOMAN FOOTBED

ASOLO-ORTHOLITE FOOTBEDS:

The new Fastpacking footbeds are the result of the partnership between Asolo and OrthoLite.

They differentiate by man and women and they follow the design of the new Approach last and lasting board.

The Fastpacking footbeds deliver reliable underfoot comfort for all day wear.

The top part is made in antibacterial velveteen while the lower part is made of recycled material.

BENEFITS:

Eco-Friendly: All OrthoLite foams contain 5% recycled rubber, helping keep hundreds of tons of waste out of landfills each year.

Moisture Management: The unique open-cell structure of OrthoLite foam creates a moisture management system, helping to move moisture away and provide a cooler, drier, healthier environment in any application.

Lightweight: OrthoLite foams are extremely lightweight—enhancing performance with day-in, day-out airy comfort.

Long-term cushioning: Unlike traditional foam, OrthoLite® foam compresses less than 5% over the lifetime of the product—so the cushioning, fit, comfort and performance never change.

High-level breathability: OrthoLite foam's open-cell PU technology is 95% to 100% breathable, allowing air to circulate in and around the foam, keeping the surrounding environment cooler.

Washable: OrthoLite foams are machine washable, coming out like new every time while maintaining all of the comfort and performance benefits after washing.

FASTPACKING - Outsole Technology

Asolo's footwear are made using outsole designed by Asolo. The Asolo Sigma Grip is an innovative exclusive Asolo compound that represents the most advanced traction system for all rugged terrains. The Sigma Grip technology is made entirely of rubber material without the addition of metal components or inserts. Unmatched technology on wet surfaces and exceptional durability are the main advantages of the compound.



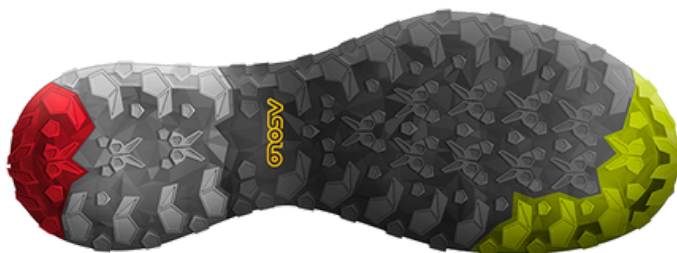
Tpu toe cap protection: additional front protection



High density Eva midsole: the mono density Eva midsole offers the best stability, support, comfort and cushioning.

AS Tech: for Support Fastpackers, minimizing deviation of excess knee movement can help stabilize your hike — that's where Asolo support technology comes in. Every Fastpacker benefits from some level of support for their unique hiking style or speed hiking.

The new Asolo Stability Technology has been designed and incorporated to give structure and torsion stability.



Outsole: Asolo Cross rubber outsole with Sigma Grip compound guarantees the best traction, grip, durability and self-cleaning action.

TAHOE MID GTX



Best use: Mid cut hiking shoe for fastpacking and speed hiking, excellent in rugged terrains. Gore-Tex membrane protect your feet and breathe easily.

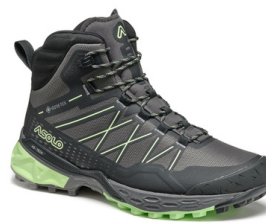
MAN A40056 00 B181
shark grey-black-beige



MAN A40056 00 B056
black-safety yellow



WOMAN A40057 00 B055
black-celadon



WOMAN A40057 00 B182
shark grey-black-brook green



478
1/2 PAIR
8 UK



FIT
MM-ML



SIZE
MAN
7-12,5 UK

SIZE
WOMAN
4-9 UK

UPPER: Polyester reinforced with TPU material

LINING: Gore-Tex Extended Comfort Footwear

LASTING BOARD: Asoflex AG in polypropylene

ANATOMIC FOOTBED: Asolo/Ortholite

SOLE: Asolo Cross with Sigma Grip compound (rubber-Eva)

MADE: in Asia

RESOLING: The model can get resoled

TAHOE LTH GTX

Best use: Low cut hiking shoe for fastpacking and speed hiking, excellent in rugged terrains. Gore-Tex membrane protect your feet and breathe easily.

MAN A40058 00 A627
graphite-green lime



MAN A40058 00 B099
olive-trance buzz



WOMAN A40059 00 B105
graphite-celadon



418
1/2 PAIR
8 UK



FIT
MM-ML



SIZE
MAN
7-12,5 UK

SIZE
WOMAN
4-9 UK

UPPER: Water resistant suede mm 1,4-1,6

LINING: Gore-Tex Extended Comfort Footwear

ANATOMIC FOOTBED: Asolo/Ortholite

LASTING BOARD: Asoflex AG in polypropylene

SOLE: Asolo Cross with Sigma Grip compound (rubber-Eva)

MADE: in Asia

RESOLING: The model can get resoled

SUSTAINABILITY: Contains leather from a tannery rated by the Leather Working Group (LWG)

TAHOE GTX



Best use: Low cut hiking shoe for fastpacking and speed hiking, excellent in rugged terrains. Gore-Tex membrane protect your feet and breathe easily.

MAN A40054 00 B181
shark grey-black-beige



MAN A40054 00 B056
black-safety yellow



WOMAN A40055 00 B054
black-black-celadon



WOMAN A40055 00 B182
shark grey-black-brook green



362
1/2 PAIR
8 UK



FIT
MM-ML



SIZE
MAN
7-12,5 UK

SIZE
WOMAN
4-9 UK

UPPER: Polyester reinforced with TPU material

LINING: Gore-Tex Extended Comfort Footwear

ANATOMIC FOOTBED: Asolo/Ortholite

SOLE: Asolo Cross with Sigma Grip compound (rubber-Eva)

MADE: in Asia

RESOLING: The model can get resoled

SOFTROCK

Best use: Low cut hiking shoe for fastpacking and speed hiking, excellent in rugged terrains. Abrasion resistant mesh upper provide durable protection and breath easily.

MAN A40050 00 B050
black-black-yellow



WOMAN A40051 00 B049
black-celadon-safety yellow



345
1/2 PAIR
8 UK



FIT
MM-ML



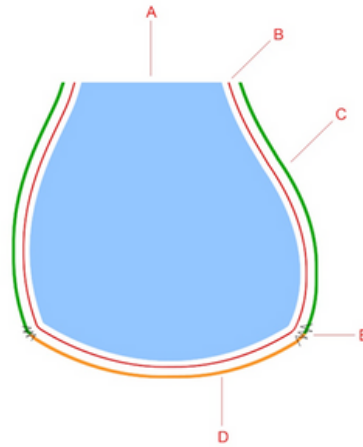
SIZE
MAN
7-12,5 UK

SIZE
WOMAN
4-9 UK

UPPER: Polyester reinforced with TPU material
LINING: Velveteen
ANATOMIC FOOTBED: Asolo/Ortholite
SOLE: Asolo Cross with Sigma Grip compound (rubber-Eva)
MADE: in Asia

RESOLING: The model can get resoled

A-FAST - Construction Technologies:



SLIP LASTED CONSTRUCTION:

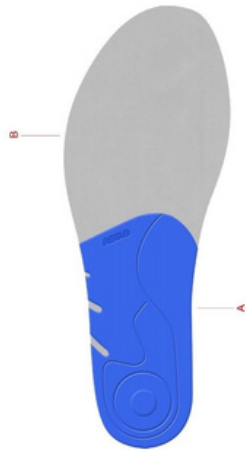
Named after its inventor, the Strobel seam is used to sew the insole to the upper. The sole unit is then applied. This technique is mainly used for running shoes and trainers as these have to be very flexible. Footwear made by strobel construction is obvious if you take out the insole which reveals the Strobel seam from the insole to the upper.

BENEFITS:

> The key advantages of the slip lasted construction shoes are the super lightweight and flexibility.

- A : Last
- B : Gore-Tex lining
- C: Upper
- D : Lasting board
- E : Strobel stitching

A-FAST - Footbed Technologies:



ASOLO FOOTBED:

The A-Fast footbeds are the result of an important study and they have been engineered completely by Asolo.

The footbeds follow the exact design of the last and the lasting board.

They are made with four different materials (top velveteen, Eva, non-woven textile, Pe heel support) and using different thickness from rear to the front part for giving extreme comfort for all day wear.

A: Thermo mould PE heel support

B: Non-woven textile

BENEFITS:

The Asolo footbed provides an extreme cushioning and anatomically designed support.

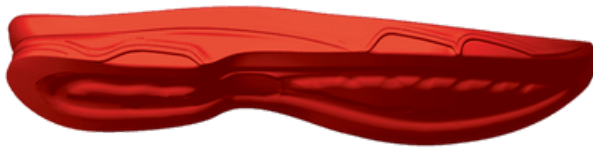
The internal foam created a cooler, drier, healthier, better cushioned environment under the foot.

The technologies and proprieties of the footbeds will not break down or lose effectiveness over time.

The Eva heel cups allow for a better heel support and add cushioning.

A-FAST SYNTHESIS - Outsole Technology

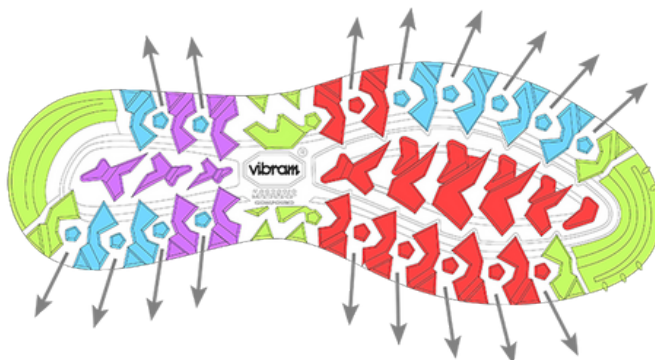
This project is born from the collaboration between Asolo and Vibram. The sole is made of a new generation compound and it offers a great balance between elasticity, fit and high absorption. The rubber outsole is designed with a low profile lugs and with lateral elements in the more stressful areas; the design of the lugs is self cleaning. It is developed with Vibram Megagrip compound which gives the maximum grip on wet terrain and it is resistant from abrasions.



High density Eva midsole: the mono density Eva midsole offers the best stability, support, comfort and cushioning



Outsole: Asolo/Vibram Synthesis rubber outsole with MegaGrip compound guarantees the best performance, grip, durability and self-cleaning action.



- Grip
- Breaking
- Traction
- Stability
- Self-cleaning

NUCLEON MID GV



Best use: Light hiking on mixed terrains, trail walking and city use.

MAN A40028 00 B171
denim blue-night blue



MAN A40028 00 A921
graphite-brown



WOMAN A40029 00 A772
graphite-silver-cyan blue



WOMAN A40029 00 B172
gerbera-carminio red



396
1/2 PAIR
8 UK



FIT
MM-ML



SIZE
MAN
7-12,5 UK

SIZE
WOMAN
4-8 UK

UPPER: Water-resistant suede mm 1,6-1,8 and Schoeller Soft Shell

LINING: Gore-Tex Extended Comfort Footwear

ANATOMIC FOOTBED: Lite 2 plus

SOLE: Asolo/Vibram Synthesis with MegaGrip compound (rubber-Eva)

MADE: in Europe

RESOLING: The model can get resoled

SUSTAINABILITY: Contains leather from a tannery rated by the Leather Working Group (LWG)

NUCLEON GV



Best use: Light hiking on mixed terrains, trail walking and city use.

WOMAN A40013 00 B172
gerbera-carminio red



WOMAN A40013 00 A772
graphite-silver-cyan blue



MAN A40012 00 A921
graphite-brown



MAN A40012 00 B171
denim blue-night blue



369
1/2 PAIR
8 UK



FIT
MM-ML



SIZE
MAN
7-12,5 UK

SIZE
WOMAN
4-8 UK

UPPER: Water-resistant suede mm 1,6-1,8 and Schoeller Soft Shell

LINING: Gore-Tex Extended Comfort Footwear

ANATOMIC FOOTBED: Lite 2 plus

SOLE: Asolo/Vibram Synthesis with MegaGrip compound (rubber-Eva)

MADE: in Europe

RESOLING: The model can get resoled

SUSTAINABILITY: Contains leather from a tannery rated by the Leather Working Group (LWG)



Best use: Light hiking on mixed terrains, trail walking and city use.

MAN A40032 00 A545
grey-blue



MAN A40032 00 A189
graphite-graphite



WOMAN A40033 00 A930
graphite-graphite-cyan blue



WOMAN A40033 00 B173
grey-magenta



364
1/2 PAIR
8 UK



FIT
MM-ML



SIZE
MAN
7-12,5 UK

SIZE
WOMAN
4-8 UK

UPPER: Water-resistant suede mm 1,6-1,8 and polyester

LINING: Gore-Tex Extended Comfort Footwear

ANATOMIC FOOTBED: Lite 2 plus

SOLE: Asolo/Vibram Synthesis with MegaGrip compound (rubber-Eva)

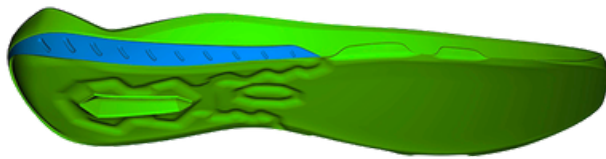
MADE: in Europe

RESOLING: The model can get resoled

SUSTAINABILITY: Contains leather from a tannery rated by the Leather Working Group (LWG)

A-FAST SPORT - Outsole Technology

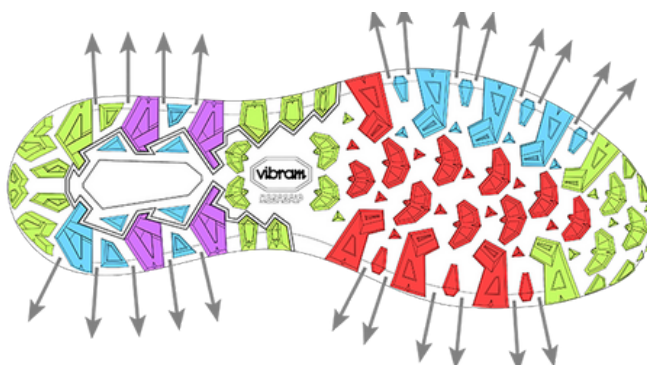
The project is born from the collaboration between Asolo and Vibram. The mono density Eva midsole is made of a new generation of compound and it offers comfort, cushioning and stability. The rubber outsole is designed with a low profile lugs perfect for day hiking and excursions. The design of the lugs are self-cleaning. The outsole has the Vibram MegaGrip compound that increases grip on wet surfaces from abrasions.



High density Eva midsole: the mono density Eva midsole offers the best stability, support, comfort and cushioning



Outsole: Asolo/Vibram A-Sport dual color rubber outsole with MegaGrip compound guarantees the best performance, grip, durability and self-cleaning action



-  Grip
-  Breaking
-  Traction
-  Stability
-  Self-cleaning

SPACE GV

Best use: Footwear designed for every day activities and traveling.

MAN A40504 00 A697
denim blue



MAN A40504 00 A855
beluga



MAN A40504 00 A551
dark brown



MAN A40504 00 A386
black-silver



329
1/2 PAIR
8 UK



FIT
MM



SIZE
MAN
7-13 UK

UPPER: Water-resistant suede 1,4-1,6 mm
LINING: Gore-Tex Extended Comfort Footwear
ANATOMIC FOOTBED: A-Sport
SOLE: Asolo/Vibram A-Sport with MegaGrip compound (rubber-Eva)
MADE: in Asia

RESOLING: The model can get resoled
SUSTAINABILITY: Contains leather from a tannery rated by the Leather Working Group (LWG)

SPACE GV

Best use: Footwear designed for every day activities and traveling.

WOMAN A40505 00 A873
graphite-cyan blue



WOMAN A40505 00 A897
gerbera



WOMAN A40505 00 A596
north sea



WOMAN A40505 00 A039
tortora



286
1/2 PAIR
8 UK



FIT
ML



SIZE
WOMAN
4-9 UK

UPPER: Water-resistant suede 1,4-1,6 mm

LINING: Gore-Tex Extended Comfort Footwear

ANATOMIC FOOTBED: A-Sport

SOLE: Asolo/Vibram A-Sport with MegaGrip compound (rubber-Eva)

MADE: in Asia

RESOLING: The model can get resoled

SUSTAINABILITY: Contains leather from a tannery rated by the Leather Working Group (LWG)



JUNIOR - Outsole Technology

The development of the Junior Technology started with the study and identification of a new last and shape specific and dedicated to the children. The flexible construction make this range perfect for children. Particular attention was on fit development that creates a precise and comfortable fit with a correct volume, following children's feet morphology. The rubber outsole offers great traction with wide lugs. It allows the maximum grip on different surfaces. The Eva midsole guarantees lightness and flexibility.



Tpu toe cap protection: additional front protection



High density Eva midsole: the mono density Eva midsole offers the best stability, support, comfort and cushioning.



Outsole: Asolo Cross rubber outsole with Sigma Grip compound guarantees the best traction, grip, durability and self-cleaning action.

TAHOE MID JR GTX

NEW

Best use: Ideal lightweight for thru-hiking, weekend overnights and day hiking.

JUNIOR A24013 00 B056
black-safety yellow



JUNIOR A24013 00 B182
shark grey-black-brook green



243
1/2 PAIR
32 FR



FIT
JR



SIZE
JUNIOR
27-38 FR

UPPER: Polyester reinforced with TPU material

LINING: Gore-Tex Extended Comfort Footwear

LASTING BOARD: Asoflex AG in polypropylene

ANATOMIC FOOTBED: Asolo/Ortholite

SOLE: Asolo Cross with Sigma Grip compound (rubber-Eva)

MADE: in Asia

RESOLING: The model can get resoled





URBAN OUTDOOR

Urban Outdoor - Consumer Profile



BEST USE: Everyday walking, travel and lifestyle.
Lightweight shoe ideal for urban excursions and walks.

CONSUMER PROFILE

Gender:
Women & Man

Age:
All ages

Occupation:
Student, young professional, middle management

Social level:
Medium high

Hobbies & Leisure:
Travel, hiking and camping passionate.

Preferred channel:
Web-mail

Other:
Active users of Social Networks

KEY FACTORS THEY ARE LOOKING FOR THEIR FOOTWEAR:

1. Style & Design
2. Fit & Comfort
3. Lightness
4. Waterproofness
5. Traction & Stability

Urban Outdoor - Technologies:



FIT:

From the beginning Asolo's philosophy has been to develop innovative and technologically advanced footwear with great looks following the correct morphology of the feet. Asolo pays particular attention to the natural flex of the foot while also making sure that performance and comfort of its footwear is maximized. In the whole Asolo collection, the lasts are broadly defined by men's, women's and child's fit, but also include narrow, normal and wide fit option in key styles. Following our fit philosophy, Asolo engineered and developed two completely new last. The new Asolo lasts have been studied for the Performance Approach Line and includes a completely dedicated last for Man following the morphology, volumes and anatomical shape of his foot and a completely dedicated last for Woman following the morphology, volumes and anatomical shape of woman's foot.



WATERPROOFNESS & BREATHABILITY:

In 1959, Bill and Genevieve Gore launch W. L. Gore & Associates in the basement of their home in Newark, Delaware. Today is recognized as the finest waterproof and breathable material in the world. To ensure the highest quality and safety, Gore-Tex work with independent, credible third-party standards "bluesign®". Asolo's shoes are certified by Gore-Tex and every pair made are 100% product tested. Gore-Tex new laminated is engineered with recycled material which assures waterproofness and breathability. Water stays on the outside while perspiration can easily escape from the inside. Gore-Tex Comfort Footwear – is made to keep you dry and protected when you're out in your adventures. A specially-constructed layer of breathable insulation adds comfort where and when you need it. So you stay dry and protected in every condition.



TRACTION:

Vibram Mega Grip is cutting-edge technology that represents the most advanced traction system for wet and dry surfaces that Vibram has ever created. Mega Grip technology is made entirely of rubber material without the addition of metal components or inserts. Unmatched technology on wet surfaces and exceptional durability are the main advantages of the compound.



COMFORT

The upper is made in Nubuck which is a top-grain cattle leather that has been sanded or buffed on the grain side, or outside, to give a slight nap of short protein fibers, producing a velvet-like surface. It is resistant to wear. Nubuck is similar to suede, but is created from the outer side of a hide, giving it more strength and thickness and a fine grain. Our supplier is Dani SpA. In 1950, Angelo Dani founded a small tannery and in the '70s and in 1997, Dani achieved its first goal by obtaining the first quality management system certificate, according to the norm ISO 9001. The company is located in Arzignano (Vicenza), which is the main tanning center in the world, and it produces, entirely in Italy, genuine leather for various sectors.



MADE IN ITALY

Made in Italy represents the excellence of creativity and craftsmanship. The Italian excellences are famous all over the world, our artistic and craftsmanship, the genius and a lot of commitment have allowed us to create a completely line of products with top-level characteristics. We live, breathe, design and manufacture high quality, like no other in the world.

GROUND

This project is born from the collaboration between Asolo and Vibram. The sole is made of a mono density microporous midsole which offers lightness, excellent cushioning and stability and perfect anatomic support.

The rubber outsole is born from the collaboration between Asolo and Vibram and designed around the last and made by Vibram rubber sole with Mega Grip compound: the high performance rubber compound featuring unparalleled grip on wet and dried terrains.

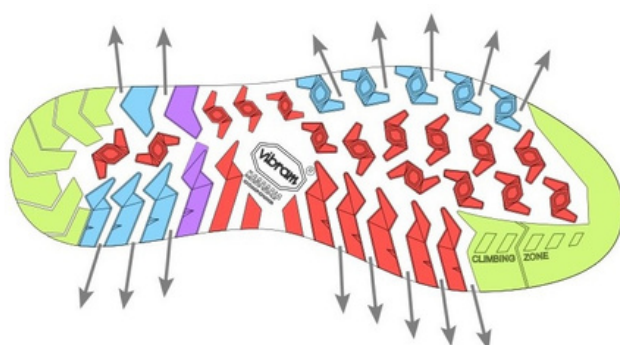


Microporous midsole: the midsole package is designed around the last and made by: mono density microporous offering the greatest support, stability and comfort. It offers lightness, excellent cushioning and stability and perfect anatomic support.



Outsole: the outsole package is born from the collaboration between Asolo and Vibram and designed around the last and made by Vibram rubber sole with Mega Grip compound: the high performance rubber compound featuring unparalleled grip on wet and dried terrains.

The rubber bottom has a large area of contact and self cleaning design, more, is designed to optimize grip and durability for each surface or activity. The heel is well sculpted to prevent problems during descent. The rubber bottom compound is Vibram Mega Grip.



- Grip
- Breaking
- Traction
- Stability
- ↗

 Self-cleaning

ACTIVE GV

Best use: Lightweight shoe ideal for urban excursions and walks.

WOMAN A38027 00 A918
petroleum



WOMAN A38027 00 A415
sage



WOMAN A38027 00 A984
ocean



WOMAN A38027 00 A716
spice



339
1/2 PAIR
5 UK



FIT
ML



SIZE
WOMAN
4-8 UK

UPPER: Water-resistant Nubuck mm 1,3-1,5
LINING: Gore-Tex Comfort Footwear and leather collar
LASTING BOARD: Teneré
ANATOMIC FOOTBED: Ground
SOLE: Asolo/Vibram Ground with MegaGrip compound (rubber-microporous)
MADE: in Europe

RESOLING: The model can get resoled

SUSTAINABILITY: Contains leather from a tannery rated by the Leather Working Group (LWG)

ACTIVE GV

Best use: Lightweight shoe ideal for urban excursions and walks.

MAN A38026 00 A415
sage



MAN A38026 00 A551
dark brown



MAN A38026 00 A984
ocean



MAN A38026 00 A362
grey



402
1/2 PAIR
8 UK



FIT
MM



SIZE
MAN
7-12,5 UK

UPPER: Water-resistant Nubuck mm 1,3-1,5

LINING: Gore-Tex Comfort Footwear and leather collar

LASTING BOARD: Teneré

ANATOMIC FOOTBED: Ground

SOLE: Asolo/Vibram Ground with MegaGrip compound (rubber-microporous)

MADE: in Europe

RESOLING: The model can get resoled

SUSTAINABILITY: Contains leather from a tannery rated by the Leather Working Group (LWG)

FIELD GV

Best use: Lightweight shoe ideal for urban excursions and walks.

WOMAN A38029 00 A918
petroleum



WOMAN A38029 00 A415
sage



WOMAN A38029 00 A984
ocean



WOMAN A38029 00 A716
spice



317
1/2 PAIR
5 UK



FIT
ML



SIZE
WOMAN
4-8 UK

UPPER: Water-resistant Nubuck mm 1,3-1,5
LINING: Gore-Tex Comfort Footwear and leather collar
LASTING BOARD: Teneré
ANATOMIC FOOTBED: Ground
SOLE: Asolo/Vibram Ground with MegaGrip compound (rubber-microporous)
MADE: in Europe

RESOLING: The model can get resoled
SUSTAINABILITY: Contains leather from a tannery rated by the Leather Working Group (LWG)

FIELD GV

Best use: Lightweight shoe ideal for urban excursions and walks.

MAN A38028 00 A415
sage



MAN A38028 00 A551
dark brown



MAN A38028 00 A984
ocean



MAN A38028 00 A362
grey



361
1/2 PAIR
5 UK



FIT
MM



SIZE
MAN
7-12,5 UK

UPPER: Water-resistant Nubuck mm 1,3-1,5
LINING: Gore-Tex Comfort Footwear and leather collar
LASTING BOARD: Teneré
ANATOMIC FOOTBED: Ground
SOLE: Asolo/Vibram Ground with MegaGrip compound (rubber-microporous)
MADE: in Europe

RESOLING: The model can get resoled

SUSTAINABILITY: Contains leather from a tannery rated by the Leather Working Group (LWG)



SUPERTREK



SUPERTREK GTX PROJECT:

The Supertrek project it is an end-consumer driven project.

Everything started seven years ago when the conversation with our end-consumers completely switched.

If before our consumers were people who go in a shop, purchase a pair of Asolo boots or shoes and go on adventure - since seven years the conversation changed.

Today our end consumers are yes, people who purchase Asolo models and go on adventure, but more, they are part of our Team and Family.

We involve our end-consumers for strategic brand decision, new projects, new collections, new technologies and new colors.

The end-consumers are today part of the Asolo Team.

How many people are part of the end-consumer Team?

By today we count 120.000 end-consumers who are part of our Team.

How do we collect many contacts?

They are part of our Community on Instagram & Facebook and part of our Newsletter database.

How do we interact with them?

We mostly interact through surveys which are published on socials or by sending survey newsletter.

Why do they want to be part of the Asolo Family and Team?

The special thing is to be an active part of the strategic, marketing and product decision process.

Being part of the brand you love is now much more than just buying the product, it is a complete inclusive experience.

SUPERTREK



REINTRODUCING A 1970s ASOLO ORIGINAL:

The original Asolo Supertrek debuted in the '70s as a lightweight alternative to our classic, heavy-duty hiking boots.

After few years on the trail, the Supertrek was retired. Now, 40 years later, we're re-introduced the Supertrek as a more versatile version of its former self.

It's comfortable both on the trail and around town, and incorporates durable, lightweight materials, a cushioning Eva midsole and a new outsole that adapts to a wide variety of terrain. We're proud to re-introduce this Asolo original.

SUPERTREK GTX:

Best vintage hiking boots restyled for modern everyday wear.

The spirit of old-scholl mountain style is alive and well in vintage-inspired breed modern hiking boots fit for wearing on and off the trails.

Not much has changed for the Supertrek in the forty-plus years since Asolo began handmaking them at its Asolo, Italy factory. Suede-grain leather uppers with a Gore-Tex waterproof membrane sit atop an Asolo outsole with traction for days. With a pair weighting in at 500 Gr. they are a lightweight boot and fully capable of your next city or hiking trip.

Urban Outdoor - Technologies:



FIT:

From the beginning Asolo's philosophy has been to develop innovative and technologically advanced footwear with great looks following the correct morphology of the feet. Asolo pays particular attention to the natural flex of the foot while also making sure that performance and comfort of its footwear is maximized. In the whole Asolo collection, the lasts are broadly defined by men's, women's and child's fit, but also include narrow, normal and wide fit option in key styles. Following our fit philosophy, Asolo engineered and developed two completely new last. The new Asolo lasts have been studied for the Performance Approach Line and includes a completely dedicated last for Man following the morphology, volumes and anatomical shape of his foot and a completely dedicated last for Woman following the morphology, volumes and anatomical shape of woman's foot.



WATERPROOFNESS & BREATHABILITY:

In 1959, Bill and Genevieve Gore launch W. L. Gore & Associates in the basement of their home in Newark, Delaware. Today is recognized as the finest waterproof and breathable material in the world. To ensure the highest quality and safety, Gore-Tex work with independent, credible third-party standards "bluesign®". Asolo's shoes are certified by Gore-Tex and every pair made are 100% product tested. Gore-Tex new laminated is engineered with recycled material which assures waterproofness and breathability. Water stays on the outside while perspiration can easily escape from the inside. Gore-Tex Extended Comfort Footwear – is made to keep you dry and protected when you're out in your adventures. A specially-constructed layer of breathable insulation adds comfort where and when you need it. So you stay dry and protected in every condition.



TRACTION:

Asolo's Supertrek footwear are made using outsole designed by Asolo. The Asolo Sigma Grip is an innovative exclusive Asolo compound that represents the most advanced traction system for all rugged terrains. The Sigma Grip technology is made entirely of rubber material without the addition of metal components or inserts. Unmatched technology on wet surfaces and exceptional durability are the main advantages of the compound.



MADE IN EUROPE

Made in Europe represents the excellence of creativity and craftsmanship. The European excellences are famous all over the world, our artistic and craftsmanship, the genius and a lot of commitment have allowed us to create a completely line of products with top-level characteristics. We believe, breathe, design and manufacture high quality, like no other in the world.



SUPERTREK

Asolo's Supertrek footwear are made using outsole designed by Asolo. The Asolo Sigma Grip is an innovative exclusive Asolo compound that represents the most advanced traction system for all rugged terrains. The Sigma Grip technology is made entirely of rubber material without the addition of metal components or inserts. Unmatched technology on wet surfaces and exceptional durability are the main advantages of the compound.



Eva midsole: the midsole package is designed around the last and made by: mono density Eva offering the greatest support, stability and comfort. It offers lightness, excellent cushioning and stability and perfect anatomic support.



Outsole: the outsole package is designed around the last and made by Asolo rubber sole with Sigma Grip compound: the high performance rubber compound featuring unparalleled traction, grip, durability and self-cleaning action.

The rubber bottom has a large area of contact and self cleaning design, more, is designed to optimize grip and durability for each surface or activity. The heel is well sculpted to prevent problems during descent. The rubber bottom compound is Asolo Sigma Grip.

SUPERTREK GTX

Best use: Vintage hiking boots restyled for modern every day wearing on and off the trails.

MAN A25500 00 A779
WOMAN A25501 00 A778
black-black



MAN: A25500 00 B156
WOMAN A25501 00 B156
petroleum-black



526
1/2 PAIR
8 UK



FIT
MM-ML



SIZE
MAN
7-12,5 UK

SIZE
WOMAN
4-8 UK

UPPER: Water-resistant suede lather mm 1,6-1,8
LINING: Gore-Tex Extended Comfort Footwear
LASTING BOARD: Asoflex 00 SR fast
ANATOMIC FOOTBED: Lite 2 plus
SOLE: Asolo Supertrek with Sigma Grip compound (rubber-Eva)
MADE: in Europe

RESOLING: The model can get resoled

SUSTAINABILITY: Contains leather from a tannery rated by the Leather Working Group (LWG)

SUPERTREK GTX

Best use: Vintage hiking boots restyled for modern every day wearing on and off the trails.

MAN A25500 00 B159
wool-desert beige



MAN: A25500 00 B160
wool-garden green



MAN: A25500 00 B157
wool-black cherry



MAN A25500 00 B158
wool-deep tail



526
1/2 PAIR
8 UK



FIT
MM-ML



SIZE
MAN
7-12,5 UK

SIZE
WOMAN
4-8 UK

UPPER: Water-resistant suede lather mm 1,6-1,8

LINING: Gore-Tex Extended Comfort Footwear

LASTING BOARD: Asoflex 00 SR fast

ANATOMIC FOOTBED: Lite 2 plus

SOLE: Asolo Supertrek with Sigma Grip compound (rubber-Eva)

MADE: in Europe

RESOLING: The model can get resoled

SUSTAINABILITY: Contains leather from a tannery rated by the Leather Working Group (LWG)

SUPERTREK GTX

Best use: Vintage hiking boots restyled for modern every day wearing on and off the trails.

WOMAN A25501 00 B152
earth beige-beige



WOMAN A25501 00 B154
earth beige-chilly red



WOMAN A25501 00 B155
earth beige-deep tail



WOMAN A25501 00 B153
earth beige-blue fog



526
1/2 PAIR
8 UK



FIT
MM-ML



SIZE
MAN
7-12,5 UK

SIZE
WOMAN
4-8 UK

UPPER: Water-resistant suede lather mm 1,6-1,8
LINING: Gore-Tex Extended Comfort Footwear
LASTING BOARD: Asoflex 00 SR fast
ANATOMIC FOOTBED: Lite 2 plus
SOLE: Asolo Supertrek with Sigma Grip compound (rubber-Eva)
MADE: in Europe

RESOLING: The model can get resoled
SUSTAINABILITY: Contains leather from a tannery rated by the Leather Working Group (LWG)

