



ASOLO

FALL-WINTER 2022 COLLECTION

ASOLO IS A FAMILY COMPANY WHICH HAS GAINED AN IMPORTANT
WORLDWIDE POSITION DURING THE YEARS THANKS TO HIS VALUES. OUR
COMMITMENT IS TO FIND THE PERFECT TUNING BETWEEN TRADITION AND
INNOVATION.

THE TRADITION AS SHOE MAKERS IS OUR START, OUR ROOTS, OUR ORIGIN;
THE TRADITION IS WHAT IDENTIFY US AND TELL THE WORLD WHERE WE
COME FROM. THE INNOVATION IS WHAT MAKES US NEVER STOP OUR
RESEARCH, OUR STUDIES, OUR CHALLENGES FOR IMPROVING YOUR
EMOTIONS DURING OUTDOOR ACTIVITIES. THESE TWO KEYWORDS ARE THE
REASON OF OUR JOURNEY INTO THE OUTDOOT WORLD, A JOURNEY FILLED
OF PASSION WHICH WILL NEVER END.

INDEX

SNOWSHOEING

WINTER HIKING

URBAN OUTDOOR

PERFORMANCE SNOWSHOEING

Definition & Benefits



ASOLO RECREATIONAL SNOWSHOES AND WINTER TREKKING:

While snowshoeing began thousands of years ago as a means of travel and a way to hunt, in recent years, it has become a popular winter pastime for fitness and recreation.

Every winter more and more summer walkers are turning to snowshoeing as their winter activity. Today, snowshoes are lighter weight and engineered with modern materials like nylon, polyethylene and other specialized materials which provide a higher level of performance.

This category appeals to the widest range of users and they are designed for varied terrain. These snowshoes are perfect for beginners, as well as walkers and hikers spending most of their time on trails, parks and golf courses.

THE BENEFITS OF SNOWSHOEING:

Snowshoeing is one of the fastest growing winter sports and it attracts a wide range of consumers who are looking for an inexpensive way to embrace winter and stay active outside.

It is safe, simple and easy to learn. Snowshoeing is a fun winter activity that can be enjoyed by the entire family from kids to grandparents. Snowshoes are versatile: they can be used for backyard excursions, a walk in the park or hiking in the back - country.

Snowshoeing is a low impact workout and a highly effective way to burn calories and stay active all winter. Walking with snowshoes means that you can venture into nature often where skiers and climbers can't reach. Exploring valleys & forests covered in a blanket of snow, reaching peaks or mountain villages 'shut off' by winter.

PERFORMANCE SNOWSHOEING

Customer Profile



BEST USE: Snowshoeing, hiking on snow and harsh weather.

CUSTOMER PROFILE

Gender:

Women & Men

Age:

All ages

CUSTOMER TARGET

Students, young professional, middle management

Medium high social level

Snowshoeing, ski, outdoor, hiking and camping passionate

CUSTOMER PROFILE EXPECTATIONS

1. Lightness
2. Warmth & Waterproofness
3. Traction & Stability
4. Fit & Comfort
5. Security
6. Durability
7. Style
8. Made in

PERFORMANCE SHOWSHOEING

Technologies



WARMTH & WATERPROOFNESS:

Gore-Tex Insulated Comfort Footwear – is made to keep you warm, dry and protected, even when you're out in demanding winter conditions. A specially-constructed layer of breathable insulation adds comfort where and when you need it. So even if the temperature drops, you stay comfortable and protected.



TRACTION:

Vibram Arctic Grip is a state-of-the-art technology representing the most advanced cold-weather gripping system Vibram has ever created. The Arctic Grip technology is entirely rubber material without addition of metal components or inserts. It provides the best performance possible when the design of the sole features wide contact areas with the ground and rubber lugs with wider support surfaces. Unparalleled technology on slippery, wet ice surfaces, the outstanding durability represent the three main benefits of the Arctic Grip Compound. This product will not prevent slipping on cold, slick, wet, icy, or snowy surfaces and does not replace use of crampons or spikes. This product is not intended for use on, and may harm, indoor surfaces.



SECURITY:

The RECCO® Rescue System is two-part technology; ski resorts and mountain rescue teams carry RECCO® detectors, which send out a search signal. RECCO® reflectors worn by outdoors people, bounce back a directional signal that directs the rescuer straight to the reflector. Unlike other technologies, multiple RECCO® reflectors on a person can improve detection. The reflector is permanently attached and requires no training or batteries to function. It is always “on” and ready. (We added this technology inside the tongue of the boot).



FIT & COMFORT:

Asolo pays particular attention to the natural flex of the foot while also making sure that performance and comfort of its footwear is maximized. The new last has specific anatomical features sculpted to match defined and user criteria and fit characteristics. The last are broadly defined by men's and women's.



MADE IN EUROPE:

Asolo is committed to using resources efficiently, keeping transport to a minimum and working with materials that are as eco-friendly as possible. Waste is minimized and items recycled whenever this is practicable. Effective controls of waste in respect of ground, air and water pollution are adopted. In the case of hazardous materials, emergency response plans are in place.

From the beginning Asolo's philosophy has been to develop innovative and technologically advanced footwear with great looks. Asolo pays particular attention to the natural flex of the foot while also making sure that performance and comfort of its footwear is maximized.

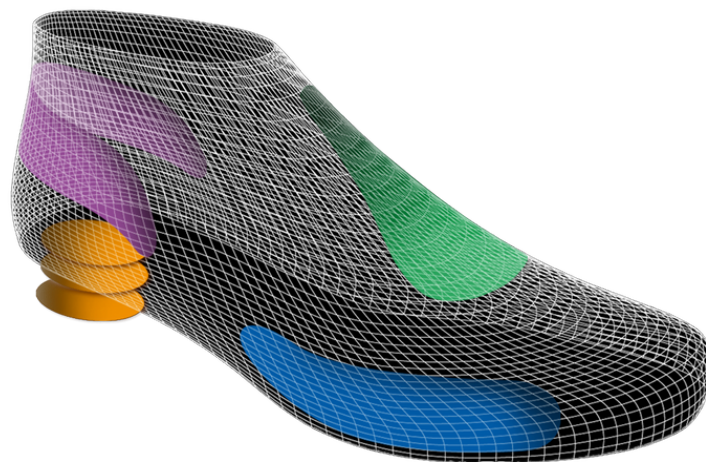
For this reason, the Asolo collection has been developed using 16 different lasts, each one with specific anatomical features sculpted to match defined and user criteria and fit characteristics. The last are broadly defined by men's, women's and child's fit, but also include narrow, normal and wide fit option in key styles.

The women's last is specifically designed to accommodate the unique anatomical shape of a women foot paying attention to four specific areas:

- 01 forefoot fit
- 02 instep (arch)
- 03 heel shape
- 04 heel height

Every part is perfectly sculpted to best match the female foot anatomy.

The result is a range of footwear that fits naturally to the foot, with great performance and comfort.



PERFORMANCE SNOWSHOEING

Ghiaccio Technology



EVA MIDSOLE:

The midsole package is designed around the last and made by: mono density moulded EVA. which guarantees the maximum comfort, stability and flexibility.

BENEFITS OF EVA MIDSOLE:

- > The mono density midsole provides an excellent next to the foot cushioning and stability.
- > The mono density midsole provides a great anatomical support.
- > The mono density midsole is extremely light.

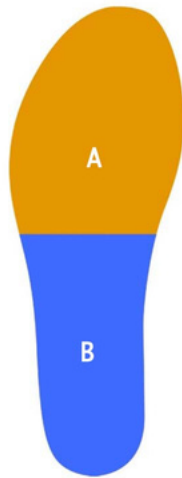


THE GHIACCIO OUTSOLE:

The outsole package is designed around the last and made by Vibram rubber sole with the Arctic Grip compound: the new high performance rubber compound featuring unparalleled grip on cold, icy, wet and snowy terrains, rugged longevity and optimal ground adaptability.

BENEFITS OF THE GHIACCIO OUTSOLE:

- > The rubber bottom has a large area of contact; self cleaning design.
- > The rubber bottom is designed to optimize the grip and durability for each surface or activity.
- > The heel is well sculpted to prevent problems during descent.
- > The rubber bottom compound is Vibram Arctic Grip.



ARCTIC GV LASTING BOARD:

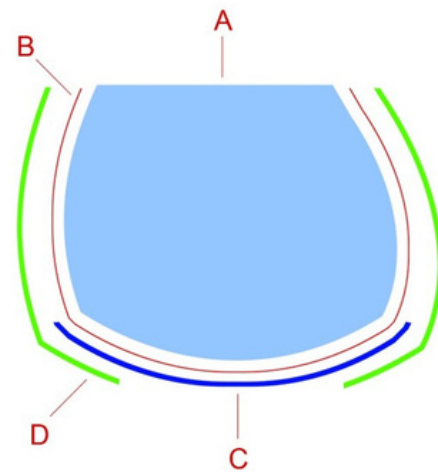
Engineered following exactly the last shape. It is made by polypropylene material and with different thickness from rear to the front area. The rear part is reinforced with a non woven textile.

A : Polypropylene

B : Non-woven textile

BENEFITS:

- > Lightness
- > Controlled flexibility
- > Foot protection



LASTED CONSTRUCTION:

This sophisticated and time-consuming technique involves the shoemaker pulling the upper over the last and downwards over the insole and affixing this to create a unit. The midsole and outsole are then applied.

BENEFITS:

- > The key advantages of cementing shoes are that they keep their shape and last a long time.
- > If the outsole is torn, the footwear can easily be resoled.

A : Last

B : Gore-Tex lining bootie

C : Lasting board

D : Upper



ARCTIC GV ANATOMIC FOOTBED:

It follows the design of the last and the lasting board and it is made with 5 different materials (aluminium, velveteen, polyethylene, Non-woven textile, Eva); it has different thickness from rear to the front part.

A : Thermo moulded PE heel support

B : Non-woven textile

BENEFITS:

- > It provides cushioning and anatomically designed support.
- > The aluminum added keep the warmth.
- > Foam creates a cooler, drier, healthier, better cushioned environment under the foot.
- > It will not break down or lose effectiveness over time.
- > EVA heel cups allow for a better heel support and add cushioning.



ARCTIC GV TEMPERATURE:

With all the characteristics described, the comfort rating temperature of the model Arctic GV we developed is -15°C.

NOTE:

Temperature ratings are approximate based on high activity levels and can be affected by many conditions, including weather, wearer's activity level, fitness, metabolism, perspiration, circulation, exposure time, clothing and cold sensitivity.



RECCO RESCUE SYSTEM:

It makes you searchable to professional rescuers in the event of an avalanche accident or when lost in the outdoors. Wearing gear equipped with RECCO reflectors enables professional rescuers to locate you with RECCO detectors. The technology is a two-part system, the detector sends out a directional radar signal like the beam of a flash light. Once the radar beam hits the RECCO reflector the signal is echoed back and directs the rescuer to your location.

RECCO handheld detectors, first introduced in 1983, are utilized today as a standard tool for avalanche rescue by mountain rescuers worldwide.

For the user the RECCO reflector offers a simple solution to always be searchable. The reflector is a small band aid sized, passive electronic transponder that weighs less than four grams. Its factory mounted permanently to clothing and gear that is unlikely to be torn off in the event of an avalanche or other accident. It is a non-powered device meaning that it never needs to be switched on, will never lose signal strength and needs no batteries to function. It is maintenance free and has a virtually unlimited lifespan.



ARCTIC GV

Best use: Snowshoeing, for winter and harsh weather hikes.

MAN A12536 00 A176
grey-gunmetal-grey



WOMAN A12537 00 A884
grey-gunmetal-blue peacock



570
1/2 PAIR
8 UK



FIT
MM-ML



SIZE
MAN
7-12,5 UK

SIZE
WOMAN
4,5-7,5 UK

UPPER: Water-resistant suede and high tenacity nylon

LINING: Gore-Tex Insulated Comfort Footwear

LASTING BOARD: Asoflex 00 SR

ANATOMIC FOOTBED: Lite 2 Alu

SOLE: Vibram Ghiaccio with Arctic Grip compound (rubber-eva)

MADE: in Europe



PHOTO: HONZA NAVRÁTIL

WINTER HIKING

Customer Profile



BEST USE: Ideal lightweight shoe for hiking and urban walks in snowy and icy conditions.

CUSTOMER PROFILE

Gender:
Women & Men

Age:
All ages

CUSTOMER TARGET

Students, young professional, middle management
Medium high social level
Travels, hiking and camping passionate

CUSTOMER EXPECTATIONS

1. Lightness
2. Warmth & Waterproofness
3. Traction & Stability
4. Fit & Comfort
5. Style & Design

WINTER HIKING

Technologies



WARMTH & WATERPROOFNESS:

Gore-Tex Insulated Comfort Footwear is made to keep you warm, dry and protected, even when you're out in demanding winter conditions. A specially-constructed layer of breathable insulation adds comfort where and when you need it. So even if the temperature drops, you stay comfortable and protected.



FIT & COMFORT:

Asolo pays particular attention to the natural flex of the foot while also making sure that performance and comfort of its footwear is maximized. The new last has specific anatomical features sculpted to match defined and user criteria and fit characteristics. The last are broadly defined by men's and women's.



TRACTION:

Vibram Arctic Grip is a state-of-the-art technology representing the most advanced cold-weather gripping system Vibram has ever created. The Arctic Grip technology is entirely rubber material without addition of metal components or inserts. It provides the best performance possible when the design of the sole features wide contact areas with the ground and rubber lugs with wider support surfaces. Unparalleled technology on slippery, wet ice surfaces, the outstanding durability represent the three main benefits of the Arctic Grip Compound. This product will not prevent slipping on cold, slick, wet, icy, or snowy surfaces and does not replace use of crampons or spikes. This product is not intended for use on, and may harm, indoor surfaces.

EVA MIDSOLE:

The midsole package is designed around the last and made by: mono density moulded EVA offering the greatest support, stability and comfort.

BENEFITS OF EVA MIDSOLE:

- > Excellent cushioning and stability
- > Perfect anatomic support
- > Lightness

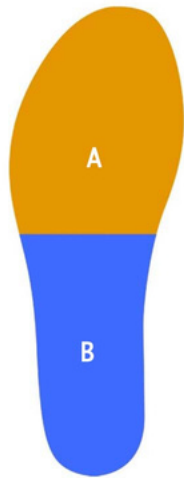


CRYSTAL AG OUTSOLE:

The outsole package is born from the collaboration between Asolo and Vibram and designed around the last and made by Vibram rubber sole with Arctic Grip compound: the new high performance rubber compound featuring unparalleled grip on cold, icy, wet and snowy, rugged longevity and optimal ground adaptability.

BENEFITS OF THE CRYSTAL AG OUTSOLE:

- > The rubber bottom has a large area of contact; self cleaning design.
- > The rubber bottom is designed to optimize the grip and durability for each surface or activity.
- > The heel is well sculpted to prevent problems during descent.
- > The rubber bottom compound is Vibram Arctic Grip.



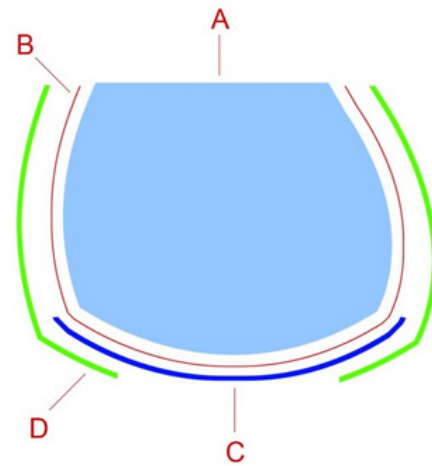
LASTING BOARD:

Engineered following exactly the last shape. It is made by polypropylene material and with different thickness from rear to the front area. The rear part is reinforced with a non woven textile.

A : Polypropylene
B : Non-woven textile

BENEFITS:

- > Lightness
- > Controlled flexibility
- > Foot protection



LASTED CONSTRUCTION:

This sophisticated and time-consuming technique involves the shoemaker pulling the upper over the last and downwards over the insole and affixing this to create a unit. The midsole and outsole are then applied.

BENEFITS:

- > The key advantages of cementing shoes are that they keep their shape and last a long time.
- > If the outsole is torn, the footwear can easily be resoled.

A : Last
B : Gore-Tex lining bootie
C : Lasting board
D : Upper



ANATOMIC FOOTBED:

It follows the design of the last and the lasting board and it is made of velveteen for the top layer, PU, for the middle layer and aluminium film in the lower layer. It utilizes different thickness from rear to the front part.

Upper layer: Velveteen
Middle layer: Pu
Lower layer: aluminum film

BENEFITS:

- > It provides cushioning and anatomically designed support.
- > The aluminum added keep the warmth.
- > Foam creates a cooler, drier, healthier, better cushioned environment under the foot.
- > It will not break down or lose effectiveness over time.



TEMPERATURE:

With all the characteristics described, the comfort rating temperature of the models for winter hiking we developed is -10°C.

NOTE:

Temperature ratings are approximate based on high activity levels and can be affected by many conditions, including weather, wearer's activity level, fitness, metabolism, perspiration, circulation, exposure time, clothing and cold sensitivity.

NUUK GV

Best use: Ideal lightweight shoe for hiking and urban walks in snowy and icy conditions.

WOMAN A26037 00 A933
black-blue moon



MAN A26036 00 A778
black-black



470
1/2 PAIR
8 UK



FIT
MM-ML



SIZE
MAN
7-12,5 UK

SIZE
WOMAN
4-8 UK

UPPER: Water-resistant suede mm 1,6-1,8 and polyester

LINING: Gore-Tex Insulated Comfort Footwear

LASTING BOARD: Asoflex 00 SR Fast

ANATOMIC FOOTBED: A-Sport

SOLE: Asolo/Vibram Crystal AG with Arctic Grip compound (rubber-eva)

MADE: in Asia

NARVIK GV

Best use: Ideal lightweight shoe for hiking and urban walks in snowy and icy conditions.

WOMAN A26039 00 A935
smokey grey-blue moon



MAN A26038 00 A937
graphite-smokey grey



490
1/2 PAIR
8 UK



FIT
MM-ML



SIZE
MAN
7-12,5 UK

SIZE
WOMAN
4-8 UK

UPPER: Water-resistant suede mm 1,6-1,8 and high tenacity nylon

LINING: Gore-Tex Insulated Comfort Footwear

LASTING BOARD: Asoflex 00 SR Fast

ANATOMIC FOOTBED: A-Sport

SOLE: Asolo/Vibram Crystal AG with Arctic Grip compound (rubber-eva)

MADE: in Asia



PHOTO: HONZA NAVRÁTIL

URBAN OUTDOOR

Costumer Profile



PHOTO: HONZA NAVRÁTIL

BEST USE: Everyday walking, travel, lifestyle.

COSTUMER PROFILE

Gender:
Women & Men

Age:
All ages

COSTUMER TARGET

Students, young professional, managers
Medium high social level
Travel, hiking and camping passionate

COSTUMER EXPECTATIONS

1. Lightness
2. Warmth & Waterproofness
3. Traction & Stability
4. Fit & Comfort
5. Style & Design

URBAN OUTDOOR

Technologies



COMFORT:

The upper is made in nubuck which is a top-grain cattle leather that has been sanded or buffed on the grain side, or outside, to give a slight nap of short protein fibers, producing a velvet-like surface. It is resistant to wear. Nubuck is similar to suede, but is created from the outer side of a hide, giving it more strength and thickness and a fine grain. Our supplier is Dani SpA. In 1950, Angelo Dani founded a small tannery for the production of leathers for industrial gloves and in the '70s the company was passed to the founder's six sons, authors of the company's dimensional and geographical growth. In 1997, Dani achieved its first goal by obtaining the first quality management system certificate, according to the norm ISO 9001. The company is located in Arzignano (Vicenza), which is the main tanning center in the world, and it produces, entirely in Italy, genuine leather for various sectors.



WATERPROOFNESS & BREATHABILITY:

Gore-Tex® new laminated is engineered with recycled material which assures waterproofness and breathability. Water stays on the outside while perspiration can easily escape from the inside.



FIT & COMFORT:

Asolo pays particular attention to the natural flex of the foot while also making sure that performance and comfort of its footwear is maximized. The new last has specific anatomical features sculpted to match defined and user criteria and fit characteristics. The last are broadly defined by men's and women's.



TRACTION:

Vibram Mega Grip is cutting-edge technology that represents the most advanced traction system for wet and dry surfaces that Vibram has ever created. Mega Grip technology is made entirely of rubber material without the addition of metal components or inserts. Unmatched technology on wet surfaces and exceptional durability are the main advantages of the compound.



MADE IN ITALY:

Made in Italy represents the excellence of creativity and craftsmanship.

The Italian excellences are famous all over the world, our artistic and craftsmanship, the genius and a lot of commitment have allowed us to create a completely new line of products with top-level characteristics. The high quality of the leathers and components, the perfection of the finishes and the refinement of the models make the result superior. We live, breathe, design and manufacture high quality, like no other in the world.

MICROPOROUS MIDSOLE:

The midsole package is designed around the last and made by: mono density microporous offering the greatest support, stability and comfort.

BENEFITS OF THE MICROPOROUS MIDSOLE:

- > Excellent cushioning and stability
- > Perfect anatomic support
- > Lightness

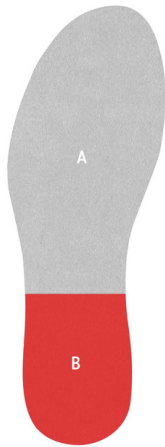


THE GROUND OUTSOLE:

The outsole package is born from the collaboration between Asolo and Vibram and designed around the last and made by Vibram rubber sole with Mega Grip compound: the high performance rubber compound featuring unparalleled grip on wet and dried terrains.

BENEFITS OF THE GROUND OUTSOLE:

- > The rubber bottom has a large area of contact and self cleaning design.
- > The rubber bottom is designed to optimize grip and durability for each surface or activity.
- > The heel is well sculpted to prevent problems during descent.
- > The rubber bottom compound is Vibram Mega Grip.



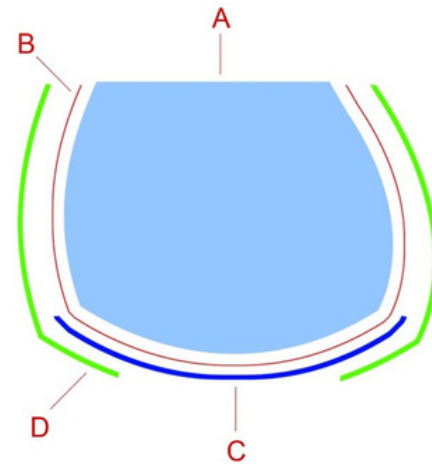
SLASTING BOARD:

it's engineered following exactly the last shape and it's made by polypropylene material with different thickness from rear to the front area. More, the rear part is reinforced with a non woven textile.

A : Polypropylene & Non-woven textile
B : Polypropylene

BENEFITS:

- > Lightness
- > Controlled flexibility
- > Foot protection



LASTED CONSTRUCTION:

This sophisticated and time-consuming technique involves the shoemaker pulling the upper over the last and downwards over the insole and affixing this to create a unit. The midsole and outsole are then applied.

BENEFITS:

- > The key advantages of cementing shoes are that they keep their shape and last a long time.
- > If the outsole is torn, the footwear can easily be resoled.

A : Last
B : Gore-Tex lining bootie
C : Lasting board
D : Upper



ANATOMIC FOOTBED:

It follows the design of the last and the lasting board and it is made of polyester, Eva and non-woven textile. It utilizes different thickness from rear to the front part.

A : Polyester

B: Eva

C : Non-woven textile

BENEFITS:

- > It provides cushioning and anatomically designed support.
- > It won't break down or lose effectiveness over time.



GORE-TEX LINING:

Gore-Tex Footwear Laminate engineered with new face fabric recycled material assures waterproofness and breathability. Water stays on the outside while perspiration can easily escape from the inside.

In 1959, Bill and Genevieve Gore launch W. L. Gore & Associates in the basement of their home in Newark, Delaware. Today is recognized as the finest waterproof and breathable material in the world. To ensure the highest quality and safety, Gore-Tex work with independent, credible third-party standards "bluesign®". Asolo's shoes are certified by Gore-Tex® and every pair made are 100% product tested.



Best use: Lightweight shoe ideal for urban excursions and walks.

WOMAN A38027 00 A918
petroleum



WOMAN A38027 00 A415
sage



WOMAN A38027 00 A984
ocean



WOMAN A38027 00 A716
spice



WOMAN A38027 00 A039
tortora



370
1/2 PAIR
8 UK



FIT
MM-ML



SIZE
MAN
7-12,5 UK

SIZE
WOMAN
4-8 UK

UPPER: Water-resistant Nubuck mm 1,3-1,5

LINING: Gore-Tex Comfort Footwear and leather collar

LASTING BOARD: Teneré

ANATOMIC FOOTBED: Ground

SOLE: Asolo/Vibram Ground with MegaGrip compound (rubber-microporous)

MADE: in Europe



Best use: Lightweight shoe ideal for urban excursions and walks.

MAN A38026 00 A415
sage



MAN A38026 00 A551
dark brown



MAN A38026 00 A984
ocean



MAN A38026 00 A362
grey



370
1/2 PAIR
8 UK



FIT
MM-ML



SIZE
MAN
7-12,5 UK

SIZE
WOMAN
4-8 UK

UPPER: Water-resistant Nubuck mm 1,3-1,5

LINING: Gore-Tex Comfort Footwear and leather collar

LASTING BOARD: Teneré

ANATOMIC FOOTBED: Ground

SOLE: Asolo/Vibram Ground with MegaGrip compound (rubber-microporous)

MADE: in Europe



Best use: Lightweight shoe ideal for urban excursions and walks.

WOMAN A38029 00 A918
petroleum



WOMAN A38029 00 A415
sage



WOMAN A38029 00 A984
ocean



WOMAN A38029 00 A716
spice



WOMAN A38029 00 A039
tortora



380
1/2 PAIR
8 UK



FIT
MM-ML



SIZE
MAN
7-12,5 UK

SIZE
WOMAN
4-8 UK

UPPER: Water-resistant Nubuck mm 1,3-1,5

LINING: Gore-Tex Comfort Footwear and leather collar

LASTING BOARD: Teneré

ANATOMIC FOOTBED: Ground

SOLE: Asolo/Vibram Ground with MegaGrip compound (rubber-microporous)

MADE: in Europe



Best use: Lightweight shoe ideal for urban excursions and walks.

MAN A38028 00 A415
sage



MAN A38028 00 A551
dark brown



MAN A38028 00 A984
ocean



MAN A38028 00 A362
grey



380
1/2 PAIR
8 UK



FIT
MM-ML



SIZE
MAN
7-12,5 UK

SIZE
WOMAN
4-8 UK

UPPER: Water-resistant Nubuck mm 1,3-1,5

LINING: Gore-Tex Comfort Footwear and leather collar

LASTING BOARD: Teneré

ANATOMIC FOOTBED: Ground

SOLE: Asolo/Vibram Ground with MegaGrip compound (rubber-microporous)

MADE: in Europe



PHOTO: HONZA NAVRÁTIL

FIT TECHNOLOGY

Man Sizes

CM	EU	UK	US
24	38	5	5 ½
24,5	38 ⅔	5 ½	6
25	39 ⅓	6	6 ½
25,5	40	6 ½	7
26	40 ⅔	7	7 ½
26,5	41 ⅓	7 ½	8
27	42	8	8 ½
27,5	42 ½	8 ½	9
28	43 ⅓	9	9 ½
28,5	43 ⅔	9 ½	10
29	44 ½	10	10 ½
29,5	45	10 ½	11
30	46	11	11 ½
30,5	46 ⅓	11 ½	12
31	47	12	12 ½
31,5	47 ½	12 ½	13
32	48 ⅓	13	13 ½
32,5	49	13 ½	14
33	49 ½	14	14 ½
33,5	50	14 ½	15
34	50 ⅔	15	15 ½
34,5	51 ½	15 ½	16
35	52	16	16 ½
35,5	52 ⅔	16 ½	17

FIT TECHNOLOGY

Women Sizes

CM	EU	UK	US
22	35 ½	3	4 ½
22,5	36 ⅓	3 ½	5
23	36 ⅔	4	5 ½
23,5	37 ½	4 ½	6
24	38	5	6 ½
24,5	38 ⅔	5 ½	7
25	39 ⅓	6	7 ½
25,5	40	6 ½	8
26	40 ⅔	7	8 ½
26,5	41 ⅓	7 ½	9
27	42	8	9 ½
27,5	42 ½	8 ½	10
28	43 ⅓	9	10 ½
28,5	43 ⅔	9 ½	11
29	44 ½	10	11 ½
29,5	45	10 ½	12
30	46	11	12 ½
30,5	47	11 ½	13
31	46 ⅓	12	13 ½
31,5	47 ½	12 ½	14
32	48 ⅓	13	14 ½
32,5	49	13 ½	15
33	49 ½	14	15 ½
33,5	50	14 ½	16

ARGENTINA

Superfit S.r.l
C1107AAR Buenos Aires
Tel: 54 11 43340033
Fax: 54 11 43340033
luis@superfit1.com

AUSTRALIA

Intertrek Pty Ltd
Nsw 2069 Roseville
Tel: 00 61 2 9417 5755
Fax: 00 61 2 9417 5722
sales@intertrek.com.au

AUSTRIA

Pichler Manfred Sportartikel
Handel E.u. Ennsweg 8
5550 Radsradt - Austria
Tel: 0043-660 4620 999
asolo@sbg.at

**BELGIUM / THE NETHERLANDS /
LUXEMBOURG**

Technolyt B.V
Industrieweg 35
1521 NE Wormerveer
Tel: (0)75 647 45 47
www.technolyt.nl

CHILE

Diseño Tatoo Limitada
Jorge Hirmas 2560 Bodega B05 -
B06 Renca, Santiago
Tel: +56 2 25678085
Fax: +56 2 25678082
sales@tatoo.ws
www.tatoo.ws

CHINA

Inspires Trading Co. Ltd
100029 Beijing
Tel: 0086 10 82031670
Fax: 0086 10 82031663
chris_li@asolochina.cn
www.asolochina.cn

CZECH REPUBLIC

Sport Prima Spol. S r.o.
Legionaru 3084/36
695 01 Hodonin
Tel: 00420 518 343 185
info@asolo.cz
www.asolo.cz

ECUADOR / BOLIVIA

Tager S.A.
Las Retamas E1-136 y Av Galo
Plaza Lasso
Tel: +593 2 2406526
Fax: +593 2 2406526
ext 102 Pichincha, Quito-Ecuador
Sales@tatoo.ws
www.tatoo.ws

FRANCE

Ricochet - Off Piste
325 Route Valparc 74330 Poisy
Tel: 0033 4 50 60 87 00
Fax: 0033 4 50 60 38 40
contact@ricochet.fr
www.ricochet.fr

GERMANY

Asolo GmbH
MOC München/Raum A133
Lilienthalalle 40 80939 München
Tel: +49 160 97710737
Tel: +49 89 32667061
Fax: +49 89 32667062
herbert.buczek@asolo.com

GREECE

Etcetera Outdoor Pc
51 Kithirion Avenue - Alimos
Tel: 0030 6977 662652
Fax: 0030 210 6021153
odi@etcetera.gr

HONG KONG

Chamonix Alpine Equipment
Mongkog. Kln, Hong Kong
Tel: 00 852 23883626
Fax: 00 852 27707110
www.chamonix.com.hk

ICELAND

Drífa ehf - Icewear
Miðhraun 4, 210 Gardabaer Iceland
Tel: +354 555 7400
Fax: +354 555 7401
icewear@icewear.is
www.icewear.is

IRAN

Shirpala
Unit 2 , No.7, 6th St. , Mir Emad St. ,
Tehran-Iran
Tel: +98 21 88750430
info@shirpala.com
www.shirpala.com

ISRAEL

Kal Gav Trade Ltd
P.O.BOX 313 Gedera 7075301 Israel
Tel: 00972 8 869 2730
Fax: 00972 8 869 2733
info@kalgav.net

JAPAN

Mont-Bell
Nishi-ku Osaka
Tel: 0081 6 6531 4765
Fax: 00816 6531 4969
support@montbell.com

KOREA

Helinox Inc. Incheon
Tel: 0082 70 71653032
jhkim@helinox.comu

LITHUANIA

Montis magia UAB
Konstitucijos pr. 12,
Vilnius LT-09308
Tel: 00 37069952012
info@montismagia.lt
www.montismagia.lt

MALTA

Adventure Camping Shop Co. Ltd
Dun Karm Street, B'Kara Bypass,
c/w Giovanni Papaffy,
Birkirkara, BKR 4021
Tel: 00356 21443386
Fax: 00356 21443386
Mob: 00356 99263668,
nico@adventureshop.mt
www.adventureshop.mt

REPUBLIC OF MOLDOVA

X-Style Outdoor Equipment Center
Tricolux S.r.l.
MD-2005, Chisinau, Bd. Grigore
Vieru, 27
Tel: 00 373 22 210050
info@xstyle.md
www.xstyle.md

NEW ZEALAND

Outsider Mountain Sport
24A Albert Street Rangiora 7440 -
North Canterbury
Tel: 0064 3 3106401
Fax: 0064 3 3106402
office@oms.co.nz

NORWAY

Nordly Sport AS
Jossiasvegen 6, 7513 St Jordal
Tel: +47 91382829
www.nordlyssport.no

PERU

Diseños Tatoo Perú S.R.L
Calle las Margaritas 151, Lince,
15046 Lima, Perú
Tel : +51 1 2210515
Sales@tatoo.ws
www.tatoo.ws

POLONIA

Summit
UL. Kosciuski 10, 40049 Katowice
Tel: +48 (32) 251 36 57
summit.asolo@gmail.com

RUSSIA

Kaht Sport Club Russia
115230, Moscow,
Electrolitnij proezd, d.7, korp 2.
Tel: 007 495 604 1021
Fax: 007 499 317 9806
sckant@kant.ru
www.kant.ru

SLOVAKIA

Sport Prima SK Spol. s.r.o.
82107 Bratislava
Tel: 00421 944 111 011
info@asolo.sk
www.asolo.sk

SLOVENIA

Alpvent D.O.O.
Dobracevska Ulica 49, 4226 Ziri
Tel: 00386 451 91 533
Tel: 00386 51 411 040
outdoor@alpvent.com

SPAIN / ANDORRA

Carving Sport SL
22710 Castiello de Jaca
Tel: 0034 97 4363490
Fax: 0034 97 74364565
info@carving-sport.com

SWITZERLAND

Contact & Production SA
Via Santuario, 1
CH-6644 Orselina
Tel: +41 91 751 61 32
Tel: +41 79 872 43 55
www.contactproduction.ch

TAIWAN

Metroasis CO. LTD
No.169-1, Sec. 1, Kangle Rd.,
Xinfeng Township, Hsinchu County
304 Taiwan (R.O.C.)
metroasis.service@gmail.com
www.metroasis.com.tw

THAILAND

Outdoor Plus Co. Ltd
4/373 Soi Serithai 57, Klongkum
Buengkum, 10240, Bangkok
Tel: +66 87-905-1888
pupharikul@gmail.com
kittiphat@thailandoutdoor.com

TURKEY

Kutupayisi LTD STI
Bahcelievler/ Istanbul
Tel : 0090 212 2 430430
Fax: 0090 212 2 517800
info@kutupayisi.com

UKRAINE

Shambala Company
49000 Dnepropetrovsk
Tel: 0038 056 3702401
Fax: 0038 056 2323474
info@shambala.dp.ua

UNITED KINGDOM

The Outsider Resource Company
23a Church lane, Redmile
NG13 0GE
Peter Rostron
Tel. 07703 112079
Tel. 01949 842913
prostron651@btinternet.com

U.S.A / CANADA

Asolo USA Inc.
10 Benning Street, Suite 160 #251
West Lebanon NH 03784-3402
Tel. 603-448-8827
Fax: 603-448-8873
asolo@asolo-usa.com
www.asolo-usa.com

ASOLO Srl

Via delle Industrie 2, 31040 Nervesa
della Battaglia, Treviso – Italy
Tel: +39 0422 8866
Fax: +39 0422 885282
asolo@asolo.com
www.asolo.com

CALABRIA / BASILICATA

Rovito Francesco
Tel: 338 1199301
rovitofranco@gmail.com

LAZIO / CAMPANIA /

MOLISE / ABRUZZO /
MARCHE / UMBRIA
Flies di Diego Imperoli S.a.s
Tel: 347 9025437
fliesimperoli@gmail.com

LIGURIA

Guaragno Roberto
Tel. 010 6456134
Cell. 335 1039709
roberto.guaragno@gmail.com

LOMBARDIA

Biebi S.r.l.
Tel: 035 315131
Tel: 393 3360161 Biroli Marco
Tel: 393 3320118 Biroli Michele
biroli.michele@gmail.com
birolim61@gmail.com

PIEMONTE / VALLE D'AOSTA

Sport & Fun Snc
Tel: 011 6633937
Fax: 011 6634778
Tel: 335 350552 Lino Urbano
Tel: 335 5795791 Matteo Gambino
sportfunsnc@gmail.com
sportfunsnc@virgilio.it

SARDEGNA

Daniele Del Furia Rappresentanze
Tel: 070 8877679
Fax: 070 821127
Cell: 335 8262395
danieledelfuria@tiscali.it

SICILIA

Alfredo Nicotra Rappresentanze
Tel: 095 3528538
Fax : 095 335774
Cell : 348 6131954
nicotra.alf@tiscali.it

TOSCANA

Mazzei Sergio
Tel: 337 707701
info@mazzeisergio.it

TRENTINO**ALTO ADIGE / VENETO /
FRIULI VENEZIA GIULIA**

Ross & Ross Snc
Tel: 0461 860288
Tel: 335 283870 Giuseppe Rossati
Tel: 335 326062 Augusto Rossati
rossati@tin.it
augustoross@outlook.it

